



Limetree Close

+44 (0) 1223 508050

lettings@cookecurtis.co.uk

www.cookecurtis.co.uk

A very large en-suite room in a six bedroomed house, offering high quality shared accommodation in an excellent location. Inclusive of utilities, council tax and broadband.

£740 pcm

Limetree Close, Cambridge,
CB1 8PF



In the last few years this property has undergone extensive works throughout and provides high quality, modern accommodation for six sharers, working in the city.

The ground floor has a spacious double bedroom and shower room with WC. The kitchen is finished with contemporary gloss units, breakfast bar, washing machine, dishwasher, fridge freezer and is open planned onto the sitting room which has patio doors out onto the garden.

There are three fully furnished bedrooms and shower room with WC on the first floor. The largest bedroom is on the first floor; this has an en-suite with shower and a double balcony overlooking the garden and trees to the rear.

The second floor has a further two good sized double bedrooms, one of which is also en-suite.

All rooms are for single occupation only, are individually locking and have TV ports, study desks, wardrobes and chest of drawers, all rents prices are inclusive of utilities, council tax and WIFI.

There is off road parking at the front of the house and the Landlord will maintain the garden for the tenancy period. Rooms are rented on individual tenancies.

Available 3rd August 2024. Video tour available.

Room 4 - Available £740.00

Room 6 - Available £660.00







139sqm / 1496sqft

6 bed, 1 recep, 4 bath

EPC - C / 76

Council tax – included in rent

Gas central heating

On street parking

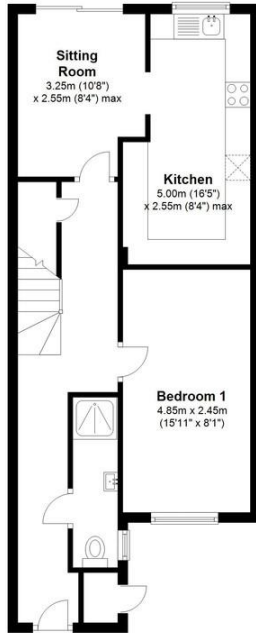
Utilities included

Available August 2024



Ground Floor

Approx. 50.6 sq. metres (545.1 sq. feet)



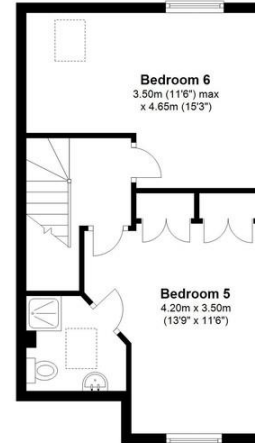
First Floor

Approx. 50.3 sq. metres (541.2 sq. feet)



Second Floor

Approx. 37.3 sq. metres (401.1 sq. feet)



Total area: approx. 138.2 sq. metres (1487.3 sq. feet)



Limetree Close is located just off Cherry Hinton Road which takes you from the city all the way to the village of Cherry Hinton. The road itself has an excellent range of facilities including nearby doctors and dentists surgeries, grocery shops, restaurants and take aways. Mill Road, one of the country's top 50 suburbs and its cosmopolitan shops, delis and restaurants is a 4 min bike ride away whilst Addenbrooke's Hospital and Cambridge Train Station are 5 and 6 minutes respectively.

COOKE
CURTIS
& CO