

linkagency

3 Bedroom House - Semi-Detached for Sale

Price Guide £200,000

16 Old Rugby Park, Goole, DN14 6BJ



KEY FEATURES

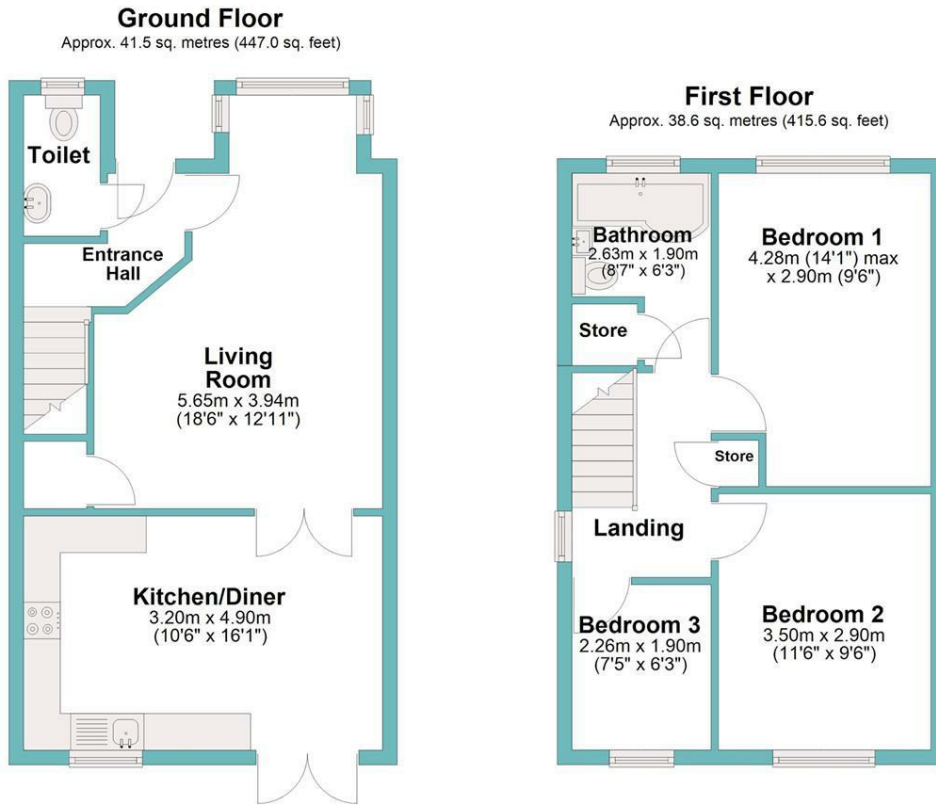
- NO ONWARD CHAIN
- IMMACULATE THROUGHOUT
- QUIET CUL DE SAC POSITION
- SYNTHETIC TURF LAWN
- MODERN KITCHEN WITH APPLIANCES
- GAS CENTRAL HEATING



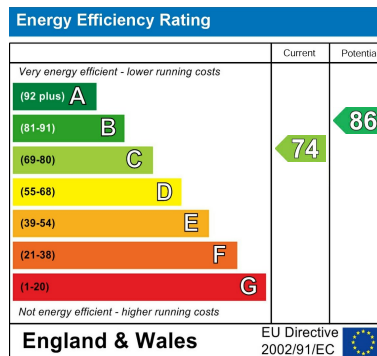




linkagency



Total area: approx. 80.1 sq. metres (862.7 sq. feet)



Disclaimer

These particulars are produced in good faith. They are set out as a general guide only and do not constitute, any part of an offer or a contract. None of the statements contained in these particulars as to this property are to be relied on as statements or representations of fact. Any intending purchaser should satisfy him/herself by inspection of the property or otherwise as to the correctness of each of the statements prior to making an offer. No person in the employment of, or association with, Link Agency, has any authority to make or give any representation or warranty whatsoever in relation to this property.