

linkagency

3 Bedroom House - Detached for Sale

Asking Price £340,000

Beighton House 8 Park Avenue, Goole, DN14 6UY



KEY FEATURES

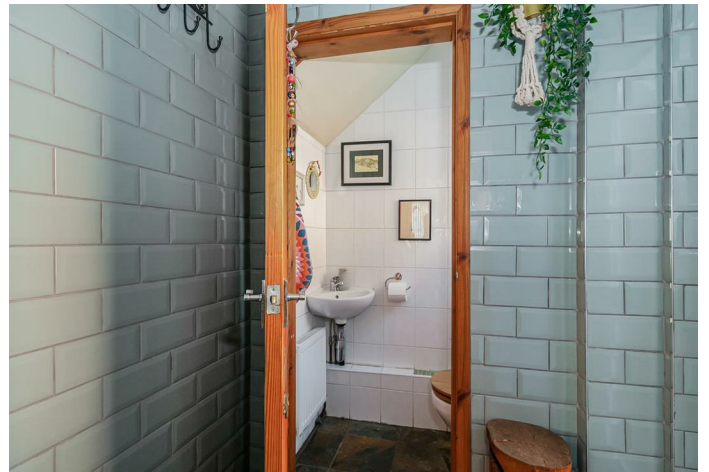
- LOCATED ON ONE OF THE TOWNS MOST DESIRABLE ROADS
- SURROUNDED BY A LOT OF GREEN SPACE AND LEAFY AVENUES
- FORECOURT PARKING
- MATURE, WELL STOCKED GARDENS
- PLENTY OF OUTSIDE SPACE
- A STONE'S THROW FROM WEST PARK
- THE PROPERTY IS IN WALKING DISTANCE OF PRIMARY AND SECONDARY SCHOOLS

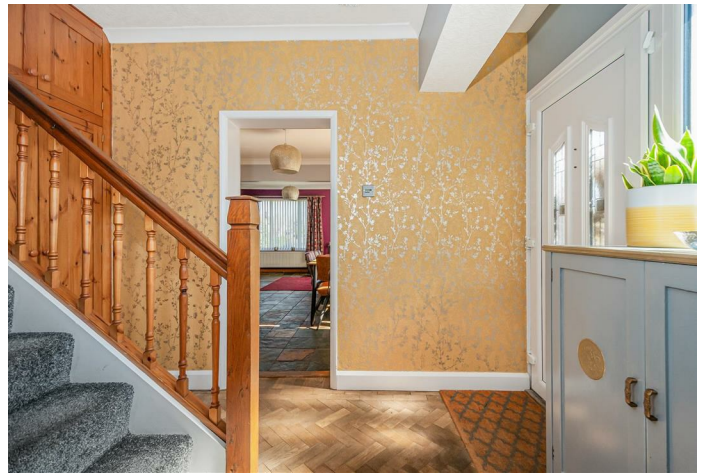
HEAD OFFICE

93 Pasture Road, Goole, East Yorkshire, DN14 6BP

Telephone: 01405 768401
Email: enquiries@linkagency.co.uk
Website: <https://www.linkagency.co.uk>







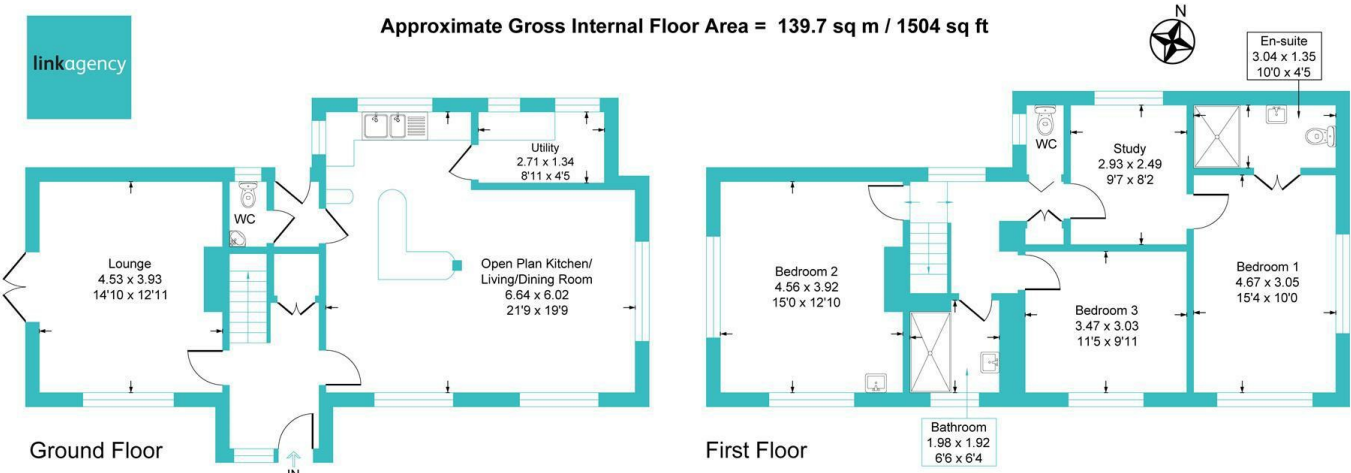
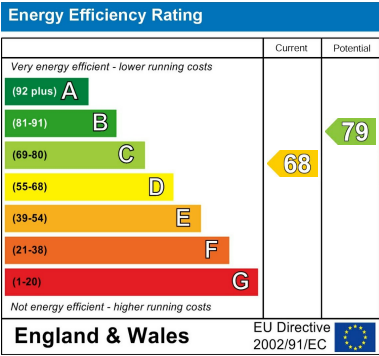


Illustration for identification purposes only, measurements are approximate, not to scale.



Disclaimer

These particulars are produced in good faith. They are set out as a general guide only and do not constitute, any part of an offer or a contract. None of the statements contained in these particulars as to this property are to be relied on as statements or representations of fact. Any intending purchaser should satisfy him/herself by inspection of the property or otherwise as to the correctness of each of the statements prior to making an offer. No person in the employment of, or association with, Link Agency, has any authority to make or give any representation or warranty whatsoever in relation to this property.