

# linkagency

4 Bedroom House - Detached for Sale

Asking Price £460,000

Ashlau House South Street, Barmby-On-The-Marsh, DN14 7HR



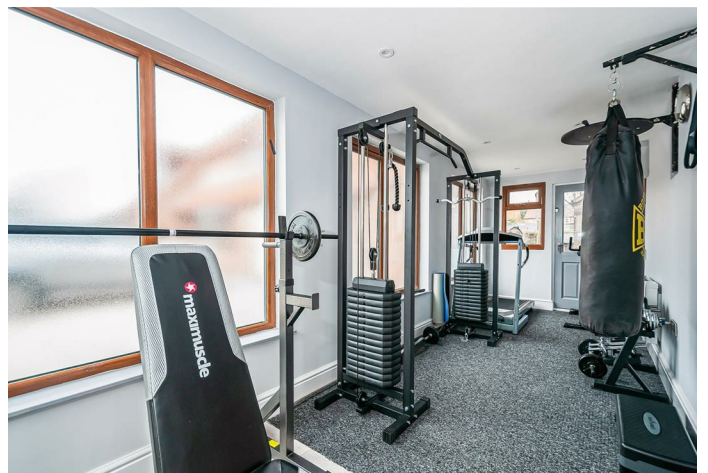
## KEY FEATURES

- LARGE DETACHED FAMILY HOUSE
- RURAL LOCATION CLOSE TO THE MARKET TOWN OF HOWDEN
- GARAGE/STORE AND DRIVEWAY PARKING
- MODERN THROUGHOUT
- GYM/ EXERCISE ROOM
- MASTER BEDROOM WITH ENSUITE
- DOWNSTAIRS STUDY
- THREE DOWNSTAIRS RECEPTION ROOMS

HEAD OFFICE

93 Pasture Road, Goole, DN14 6BP

Telephone: 01405768401  
Email: [enquiries@linkagency.co.uk](mailto:enquiries@linkagency.co.uk)  
Website: [www.linkagency.co.uk](http://www.linkagency.co.uk)









linkagency

Approximate Gross Internal Floor Area = 222.2 sq m / 2393 sq ft

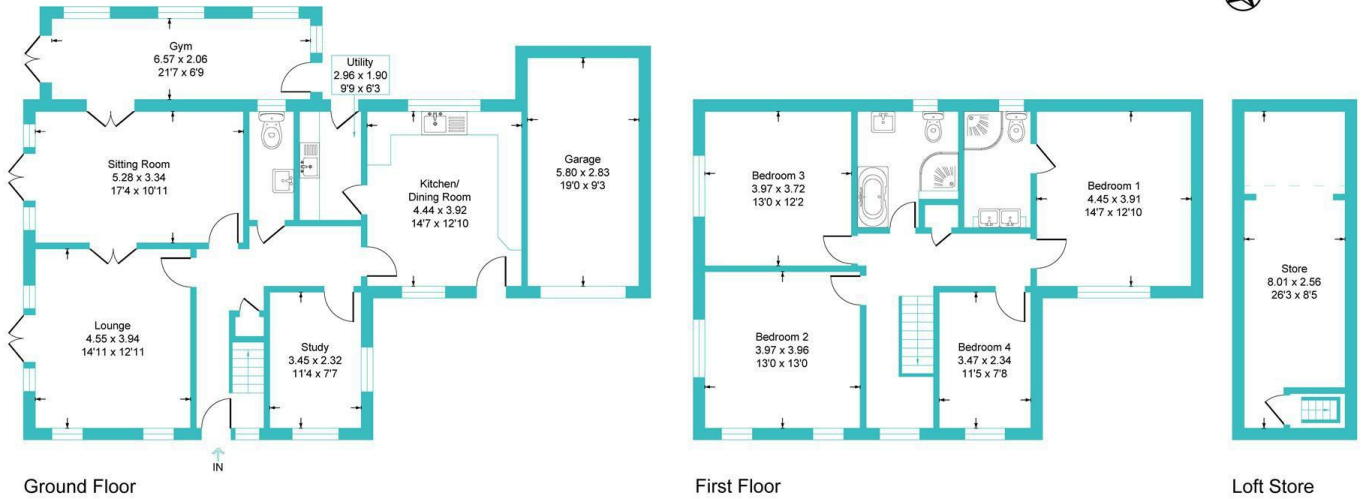


Illustration for identification purposes only, measurements are approximate, not to scale.

| Energy Efficiency Rating                    |                         |           |
|---|-------------------------|-----------|
|   | Current                 | Potential |
| Very energy efficient - lower running costs |                         |           |
| (92 plus) <b>A</b>                          |                         |           |
| (81-91) <b>B</b>                            |                         |           |
| (69-80) <b>C</b>                            | 71                      | 79        |
| (55-68) <b>D</b>                            |                         |           |
| (39-54) <b>E</b>                            |                         |           |
| (21-38) <b>F</b>                            |                         |           |
| (1-20) <b>G</b>                             |                         |           |
| Not energy efficient - higher running costs |                         |           |
| <b>England &amp; Wales</b>                  | EU Directive 2002/91/EC |           |

Disclaimer

These particulars are produced in good faith. They are set out as a general guide only and do not constitute, any part of an offer or a contract. None of the statements contained in these particulars as to this property are to be relied on as statements or representations of fact. Any intending purchaser should satisfy him/herself by inspection of the property or otherwise as to the correctness of each of the statements prior to making an offer. No person in the employment of, or association with, Link Agency, has any authority to make or give any representation or warranty whatsoever in relation to this property.