



# 17 Regency Mews

, Redcar, TS10 1AX

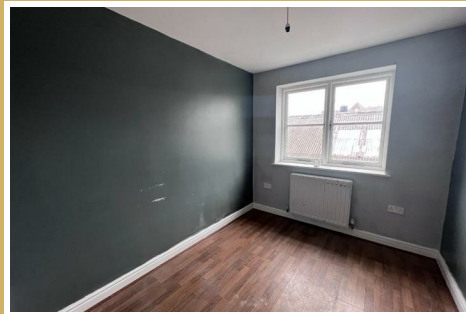
£69,950



# 17 Regency Mews

, Redcar, TS10 1AX

£69,950



## COMMUNAL HALLWAY

Step through a secure entryway and ascend to the welcoming first floor, where you'll discover the entrance to a captivating apartment

## RECEPTION ROOM

Enter the inviting reception room, a generously proportioned space adorned with sleek laminate flooring. Natural light filters through the UPVC double-glazed window, complementing the warmth emitted from the modern radiator.

## KITCHEN

The heart of the home is the fully-equipped kitchen, boasting an integrated electric oven, a responsive gas hob, and a sleek extractor fan, ready to inspire your culinary creations.

## BEDROOM ONE

Retreat to the serene double bedroom, where the consistent theme of stylish laminate flooring meets the practical elegance of a UPVC double-glazed window, all brought together with the comfort of a radiator.

## BEDROOM TWO

Another double bedroom mirrors the charm of Bedroom one, with the added allure of two sky-light windows inviting the stars inside.

## BEDROOM THREE

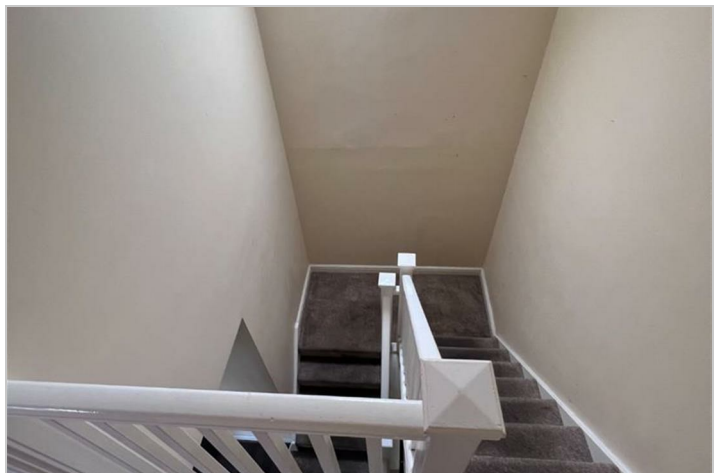
The cosy single bedroom maintains the apartment's chic aesthetic, featuring a UPVC double-glazed window, easy-to-maintain laminate flooring, and a radiator to keep you snug.

## FAMILY BATHROOM

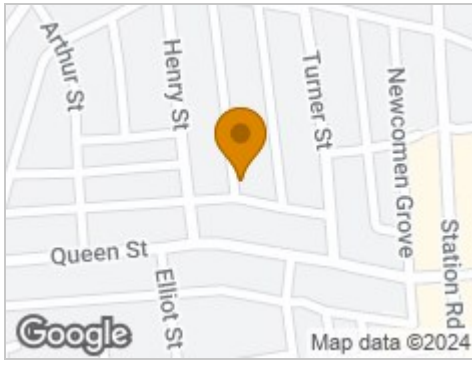
Rejuvenate in the family bathroom, where a three-piece suite awaits, including a paneled bath for soaking away the day, a wash basin, and a low-level w/c. The room combines practicality and style with its partially tiled walls, easy-to-clean flooring, and a chrome towel warmer. A frosted UPVC double-glazed window ensures privacy while inviting in soft, natural light.

## EXTERNAL

Communal parking and refuse bins provided, every detail caters to a life of ease and comfort. Don't miss out on this chance to elevate your living experience!



## Road Map



## Hybrid Map



## Terrain Map



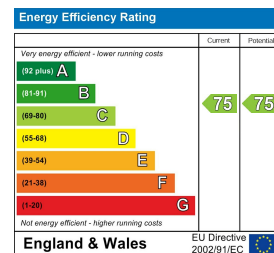
## Floor Plan



## Viewing

Please contact our Redcar Office on 01642 688814 if you wish to arrange a viewing appointment for this property or require further information.

## Energy Efficiency Graph



These particulars, whilst believed to be accurate are set out as a general outline only for guidance and do not constitute any part of an offer or contract. Intending purchasers should not rely on them as statements of representation of fact, but must satisfy themselves by inspection or otherwise as to their accuracy. No person in this firm's employment has the authority to make or give any representation or warranty in respect of the property.