



The Cable Yard, Electric Wharf, Coventry, CV1 4HA
Asking Price £285,000

FEARN MALONE



The Cable Yard Electric Wharf

Coventry, CV1 4HA

NO ONWARD CHAIN Luxury 4-bed terraced house in gated development with modern design, balcony views of Coventry Canal, 2 parking spaces. Ideal investment opportunity with AirBNB potential. Tranquil waterside living near city centre.

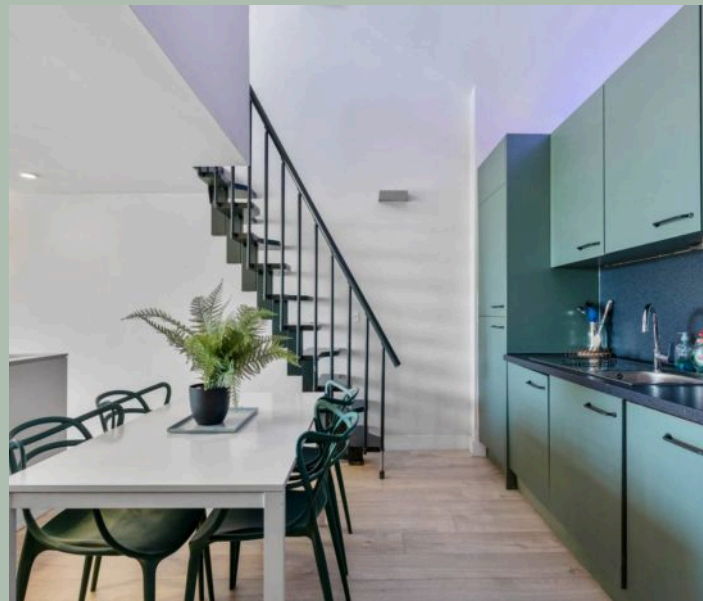
Council Tax band: C

Tenure: Leasehold

EPC Energy Efficiency Rating: C

EPC Environmental Impact Rating: C

- No Onward Chain
- Four Bedrooms
- Open Plan Living Room/Kitchen With Mezzanine Floor
- Two Parking Spaces
- Luxury Gated Development
- Close to the City Centre
- Annual Service Fee £1644.34
- Annual Ground Rent £TBC



FEARN MALONE

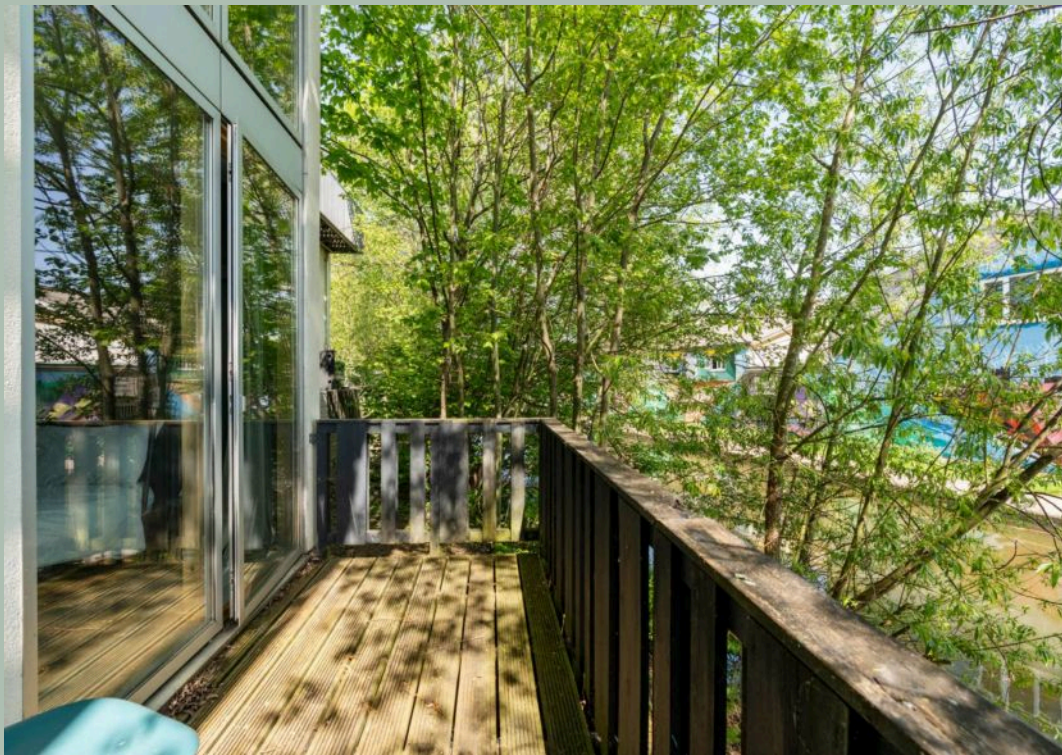
02476 012058

info@fearnmalone.co.uk



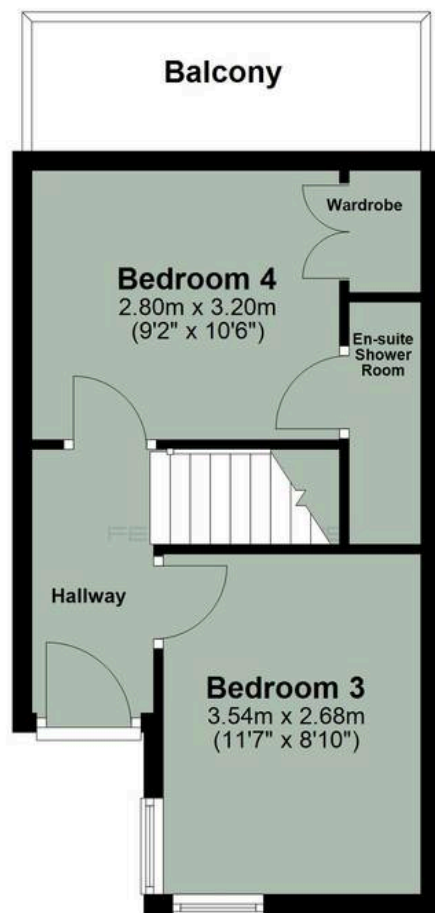






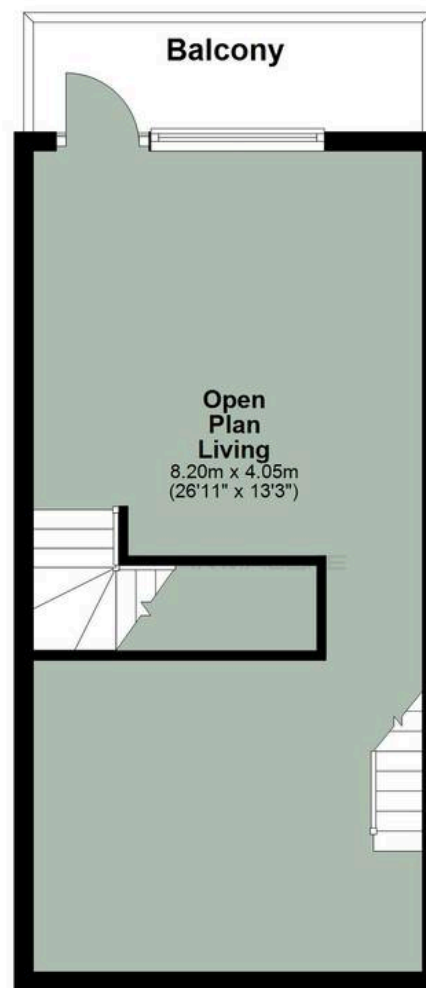
Ground Floor

Approx. 27.9 sq. metres (300.2 sq. feet)



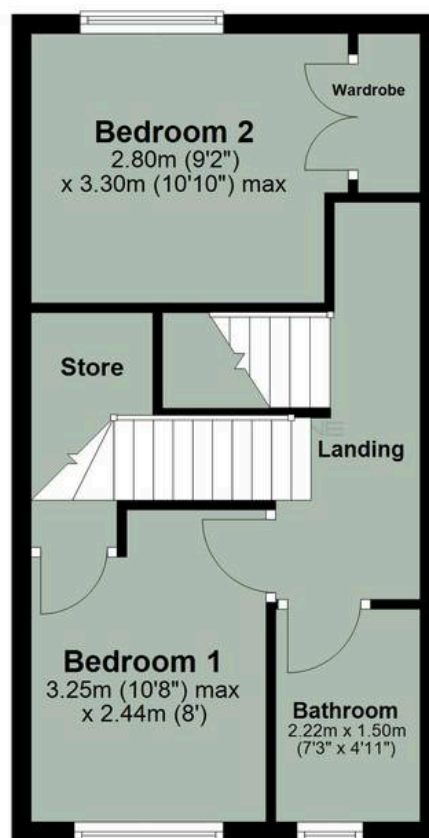
Second Floor

Approx. 33.2 sq. metres (357.2 sq. feet)



First Floor

Approx. 33.2 sq. metres (357.2 sq. feet)



Third Floor

Approx. 11.7 sq. metres (126.2 sq. feet)



Total area: approx. 106.0 sq. metres (1140.8 sq. feet)