



**Shropshire Drive, Coventry, CV3 1PH**

Guide Price **£315,000**

**FEARN MALONE**





## Shropshire Drive

Coventry, CV3 1PH

Impressive 4-bed townhouse near city centre with garage, off-road parking, astro turf garden. Outstanding community, schools, green spaces, dining options in sought-after Stoke neighbourhood.

Council Tax band: D

Tenure: Freehold

EPC Energy Efficiency Rating: C

EPC Environmental Impact Rating: C

- No Onward Chain
- Close Proximity To City Centre
- Garage & Off Road Parking
- East Facing Garden
- Great Location
- Furnishings Negotiable
- Energy Rating C
- Council Tax Band D



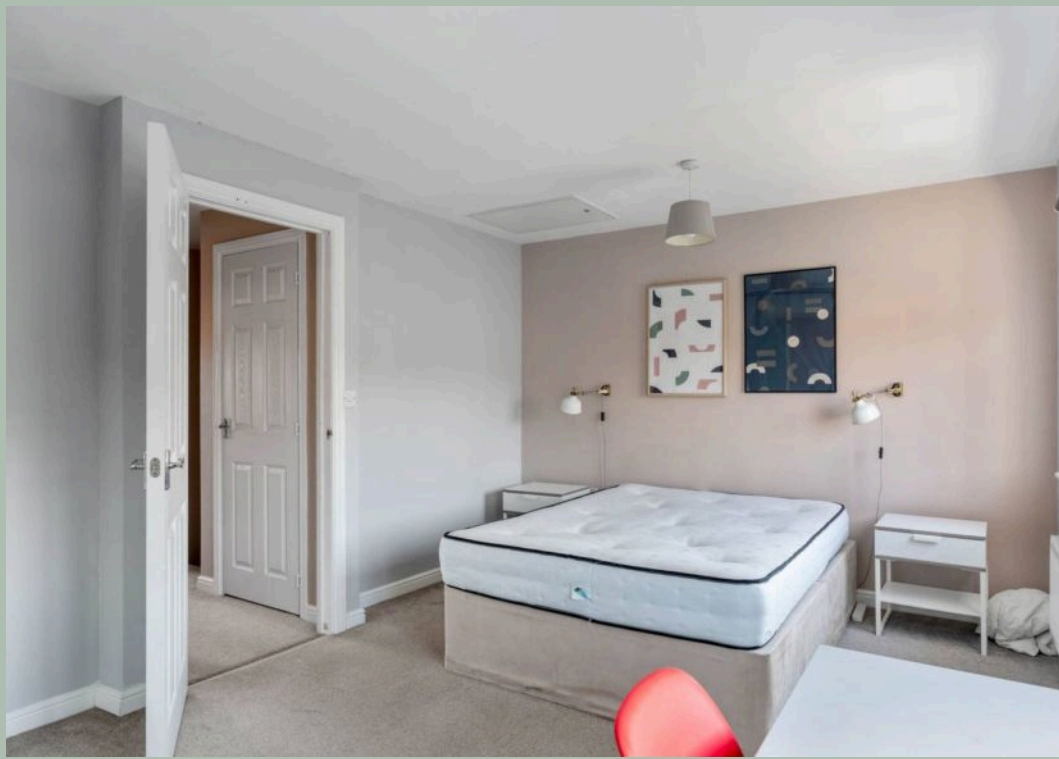
**FEARN MALONE**

02476 012058

[info@fearnmalone.co.uk](mailto:info@fearnmalone.co.uk)









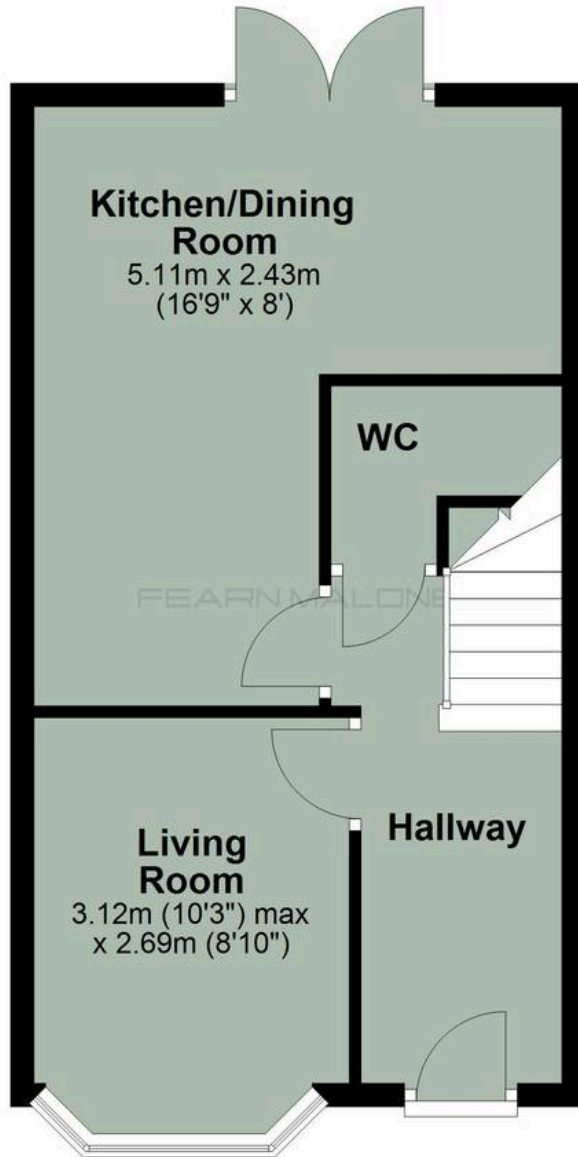






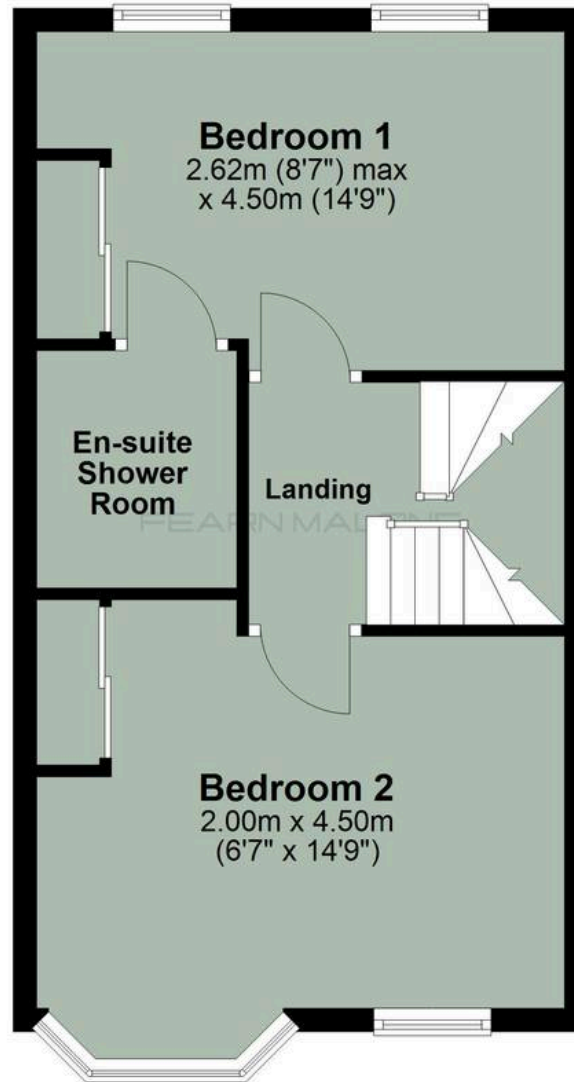
## Ground Floor

Approx. 37.8 sq. metres (406.6 sq. feet)



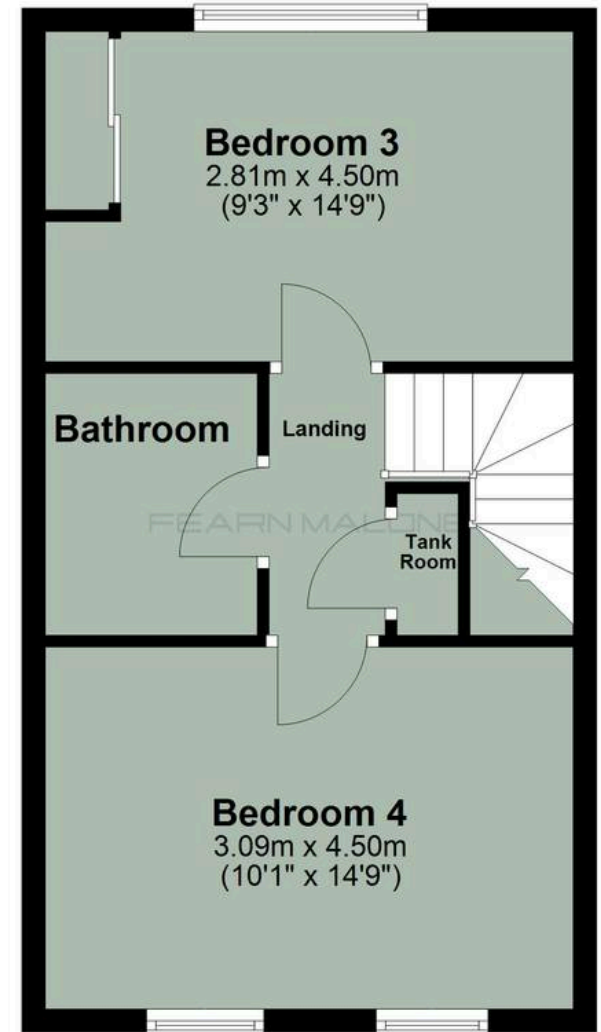
## First Floor

Approx. 37.3 sq. metres (402.0 sq. feet)



## Second Floor

Approx. 37.5 sq. metres (403.5 sq. feet)



Total area: approx. 112.6 sq. metres (1212.1 sq. feet)