



Utrillo Close, Coventry, CV5 8LW

Offers Over **£110,000**

FEARN MALONE



Utrillo Close

Coventry, CV5 8LW

Council Tax band: A

Tenure: Leasehold

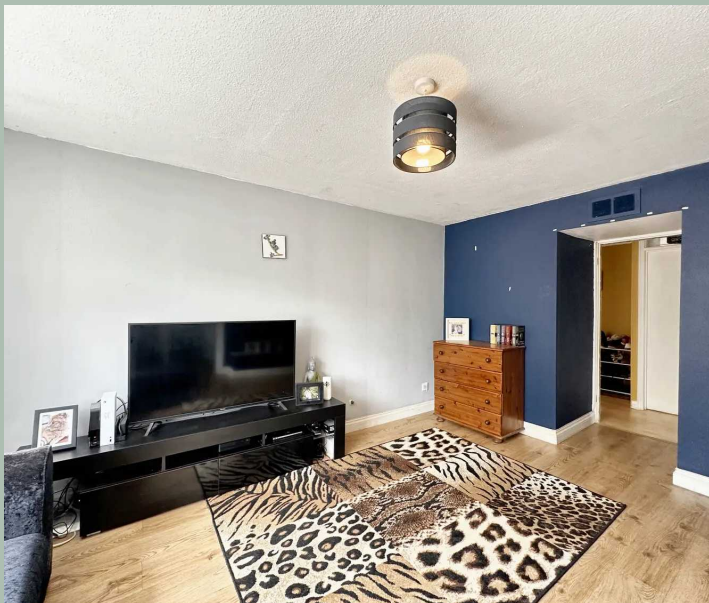
EPC Energy Efficiency Rating: C

- Ground Floor Maisonette
- Fitted Kitchen with Breakfast Bar
- Two Double Bedrooms
- Shared Garden
- Excellent First Time Purchase or Investment Opportunity
- Close to Local Shops
- Close to Whoberley Hall Primary School
- Electric Charging Points on the Street

83 Years Remaining on the Lease - managed by Citizen

Ground Rent £10 per year

Annual Service Charge £886.25



FEARN MALONE

02476 012058

info@fearnmalone.co.uk







Ground Floor

Approx. 70.3 sq. metres (756.6 sq. feet)



Total area: approx. 70.3 sq. metres (756.6 sq. feet)

This floorplan is for illustrative purposes only and it not drawn to scale. Measurements, floor-areas, openings and orientations are approximate. They should not be relied upon for any purpose and do not form any part of an agreement. No liability is taken for any error or mis-statement. All parties must rely on their own inspections.

Plan produced using PlanUp.