



Bretford Road, Coventry, CV2 1FD

£250,000



Bretford Road

Coventry, CV2 1FD

Introducing this impressive three-bedroom end-of-terrace property, a truly modern home offering spacious accommodation across three well-designed floors. Benefiting from a convenient location with easy access to University Hospital Coventry & Warwickshire, as well as the M6, this property promises an advantageous lifestyle for its fortunate new owners.

Council Tax band: B

Tenure: Freehold

- No Chain
- End of Terrace
- Three Storeys
- Three Double Bedrooms
- En-Suite & Family Bathroom
- Modern Home
- Allocated Parking
- Easy Access to University Hospital Coventry & Warwickshire
- Easy Access to M6
- EPC Rating B

Entrance Hallway

WC

Kitchen/Dining Room

15' 4" x 12' 0" (4.67m x 3.66m)

Living Room

10' 11" x 15' 5" (3.33m x 4.70m)

Landing 1

Bedroom 3

9' 5" x 15' 5" (2.87m x 4.70m)

Bathroom

Bedroom 2

10' 0" x 15' 5" (3.05m x 4.70m)

Landing 2

Bedroom 1

15' 9" x 15' 5" (4.80m x 4.70m)

En-Suite

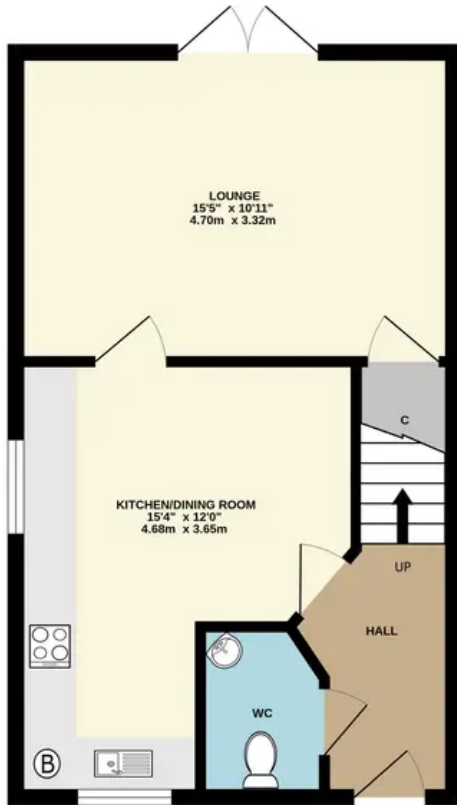




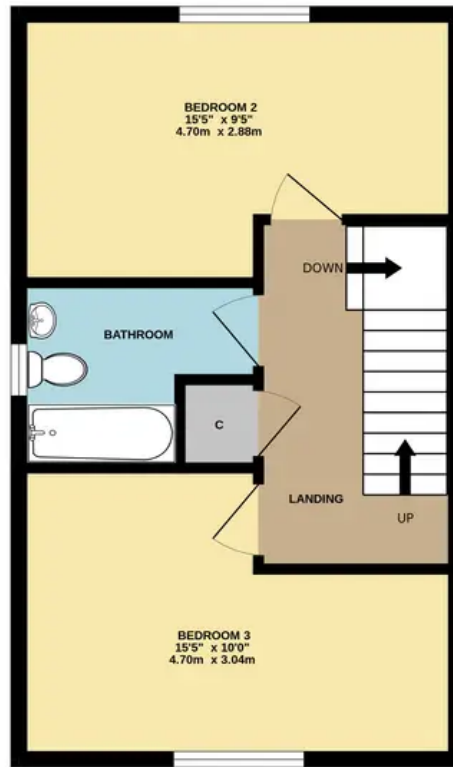




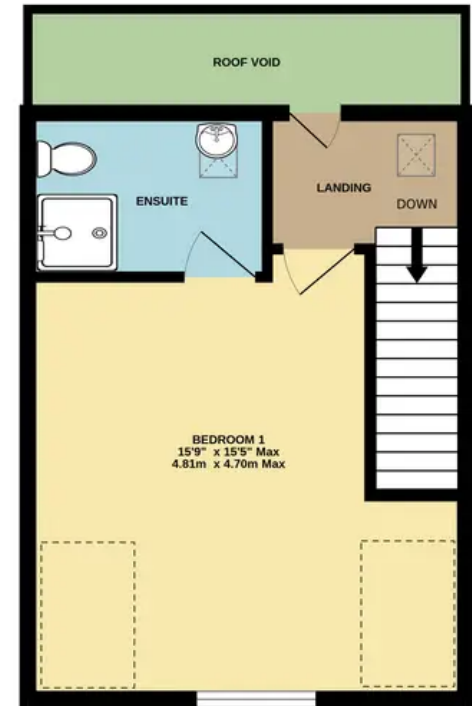
GROUND FLOOR
404 sq.ft. (37.6 sq.m.) approx.



1ST FLOOR
404 sq.ft. (37.6 sq.m.) approx.



2ND FLOOR
318 sq.ft. (29.6 sq.m.) approx.



TOTAL FLOOR AREA : 1127 sq.ft. (104.7 sq.m.) approx.

Whilst every attempt has been made to ensure the accuracy of the floorplan contained here, measurements of doors, windows, rooms and any other items are approximate and no responsibility is taken for any error, omission or mis-statement. This plan is for illustrative purposes only and should be used as such by any prospective purchaser. The services, systems and appliances shown have not been tested and no guarantee as to their operability or efficiency can be given.

Made with Metropix ©2023