



Offers in Excess of

**£1,800,000**

Added on 23/08/2024

MARKETED BY

**WOLBROOK JAMES LTD,**  
London

71-75 Shelton Street, London,  
WC2H 9JQ



PROPERTY TYPE

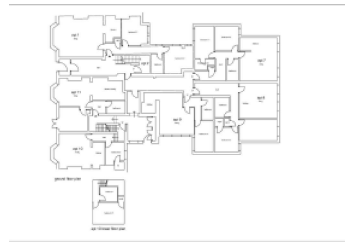
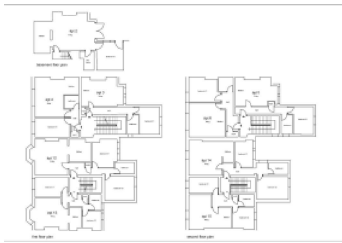
Block of Apartments

BEDROOMS

23

**Call agent**

**Request details**



## Key features

- Income Producing & Fully Occupied
- Off Street Parking
- Freehold
- High Desired Seafront Location
- 15 Apartments
- Investment Opportunity

## Description

A rare opportunity to purchase a freehold block of 15 apartments (7 x 1 bedroom & 8 x 2 bedroom) located on the highly desired Roker seafront.

The property was converted in circa 2008 by the current owners. The property spans across two adjoining buildings and offers asset management opportunities. The building has two entrances, to the front and rear, both of which are operated by an intercom system. There is a car park situated to the rear of the building which provides one parking space per flat and two additional visitor parking bays.

Contact for further information including income breakdown.

COUNCIL TAX 

Ask agent

PARKING 

Yes

GARDEN 

Ask agent

ACCESSIBILITY 

Ask agent



Energy performance certificate - ask agent




Utilities, rights & restrictions



# South Cliff, Roker Terrace, Sunderland, Tyne And Wear, SR6



## NEAREST STATIONS

 Stadium of Light Metro Station	0.7 miles
 Seaburn Metro Station	0.9 miles
 St Peter's Tram Stop	1.1 miles

 Check how much you can borrow

[Get a Mortgage in Principle !\[\]\(a03a7eb2f4046e1d3c76772003e549ea\_img.jpg\)](#)

You'll have a personalised result in just 20 minutes and you could get viewings faster when you find the home you want, with no impact on your credit score.

Powered by  **nationwide**



Broadband speed



Property sale history





Recently sold & under offer



## About the agent

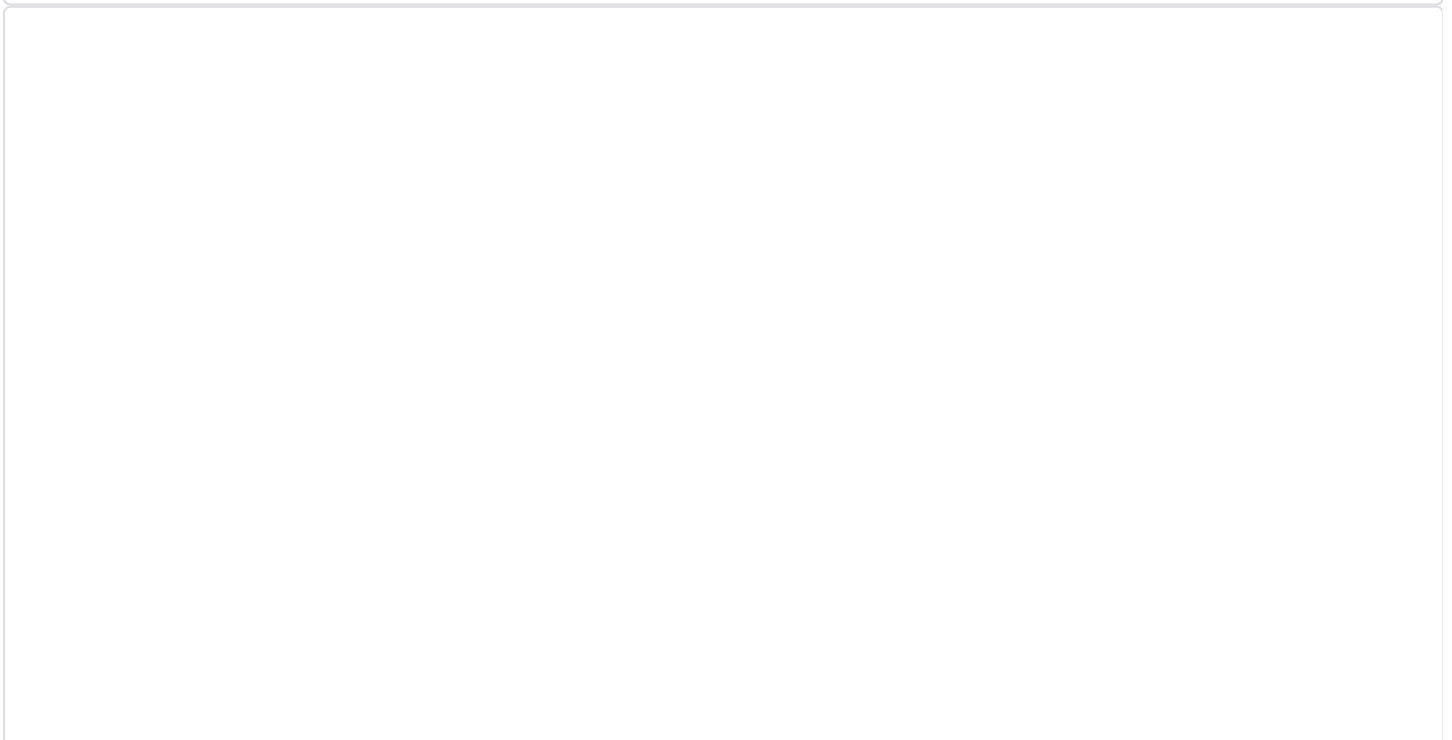
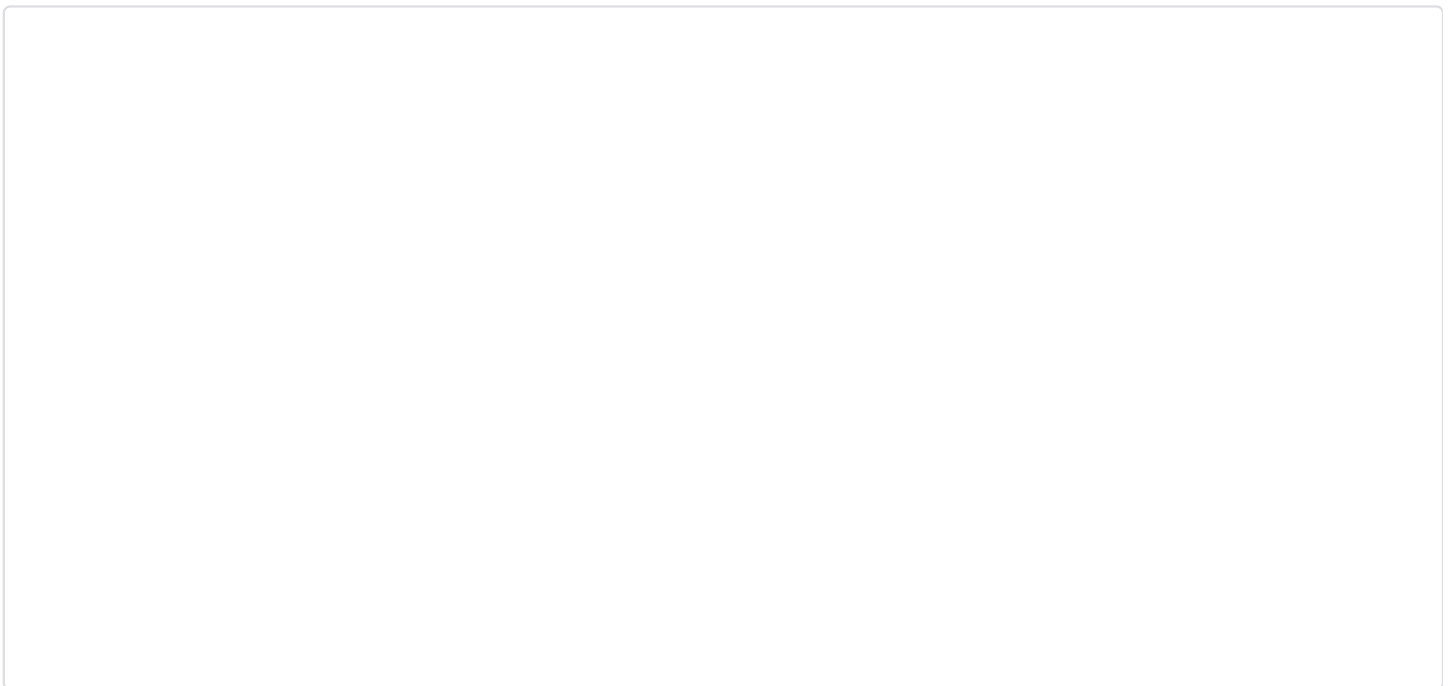
**WOLBROOK JAMES LTD, London**

71-75 Shelton Street, London, WC2H 9JQ



Independent, personal, forward-thinking Estate Agents who truly cater for the people that matter most: you.

### More properties from this agent



## Notes



 These notes are private, only you can see them.

Add your thoughts on this property...

**Disclaimer** - Property reference 12SCLiffe. The information displayed about this property comprises a property advertisement. Rightmove.co.uk makes no warranty as to the accuracy or completeness of the advertisement or any linked or associated information, and Rightmove has no control over the content. This property advertisement does not constitute property particulars. The information is provided and maintained by **WOLBROOK JAMES LTD, London**. Please contact the selling agent or developer directly to obtain any information which may be available under the terms of The Energy Performance of Buildings (Certificates and Inspections) (England and Wales) Regulations 2007 or the Home Report if in relation to a residential property in Scotland.

\*This is the average speed from the provider with the fastest broadband package available at this postcode. The average speed displayed is based on the download speeds of at least 50% of customers at peak time (8pm to 10pm). Fibre/cable services at the postcode are subject to availability and may differ between properties within a postcode. Speeds can be affected by a range of technical and environmental factors. The speed at the property may be lower than that listed above. You can check the estimated speed and confirm availability to a property prior to purchasing on the broadband provider's website. Providers may increase charges. The information is provided and maintained by [Decision Technologies Limited](#).

\*\*This is indicative only and based on a 2-person household with multiple devices and simultaneous usage. Broadband performance is affected by multiple factors including number of occupants and devices, simultaneous usage, router range etc. For more information speak to your broadband provider.

Map data ©[OpenStreetMap](#) contributors.

---

## Download the Rightmove app



Resources



---

Search



---

Locations



---

Rightmove



---

Professional



---

[Site map](#)

[Help](#)

[Cookies](#)

[Safety and Security](#)

[Terms of Use](#)

[Privacy Policy](#)

