

ANWYL
thoughtful homes

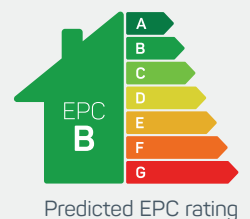


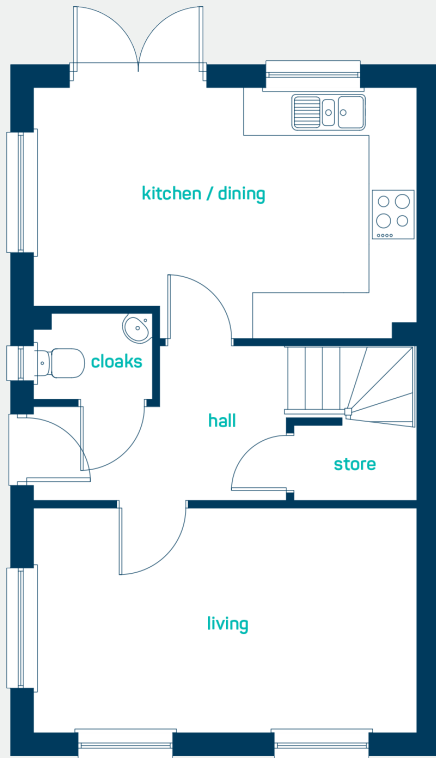
the epsom

3 bed semi-detached

A *modern* 3 bed home, perfect for growing families. Key features include an open plan kitchen diner, separate living room, French doors leading to the garden and master bedroom with en-suite.

www.anwylhomes.co.uk



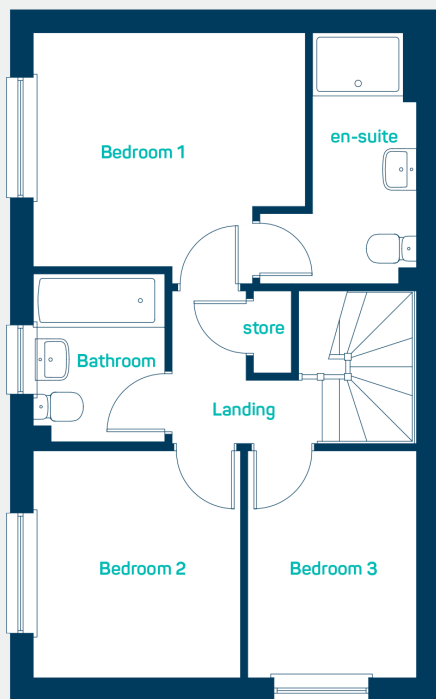


ideal for
growing families

ground floor

kitchen/dining 10'9" x 16'5"
living room 9'7" x 16'5"
cloaks 4'0" x 5'1"

kitchen/dining 3.28m x 5.00m
living room 2.91m x 5.00m
cloaks 1.21m x 1.54m



first floor

bedroom 1 10'9" x 11'8"
en-suite 10'9" x 6'8"
bedroom 2 9'9" x 8'11"
bedroom 3 9'9" x 7'3"
bathroom 7'3" x 5'7"

bedroom 1 3.28m x 3.56m
en-suite 3.28m x 2.04m
bedroom 2 2.97m x 2.71m
bedroom 3 2.97m x 2.20m
bathroom 2.21m x 1.71m

the epsom
3 bed semi-detached

ANWYL
thoughtful homes

**NEW
HOMES
QUALITY
CODE**

**NEW HOMES
OMBUDSMAN
SERVICE**

www.anwylhomes.co.uk

Anwyl Homes is a Registered Developer with the NHQB. This is a computer-generated image of the epsom, elevation treatment may vary. Room sizes are approximate, dimensions are taken from the longest room point (please consult homes advisor for measurement points). Plots may be handed and any garages may be single or double. Kitchen and bathroom layouts are indicative. These plans are correct at the time of going to press, but may be subject to change during construction. Please ensure that you check for specific plot details. 29/08/23.

everything considered.