



TO LET



Woodend Farm House Greendale Lane, Mottram St. Andrew, SK10 4AY

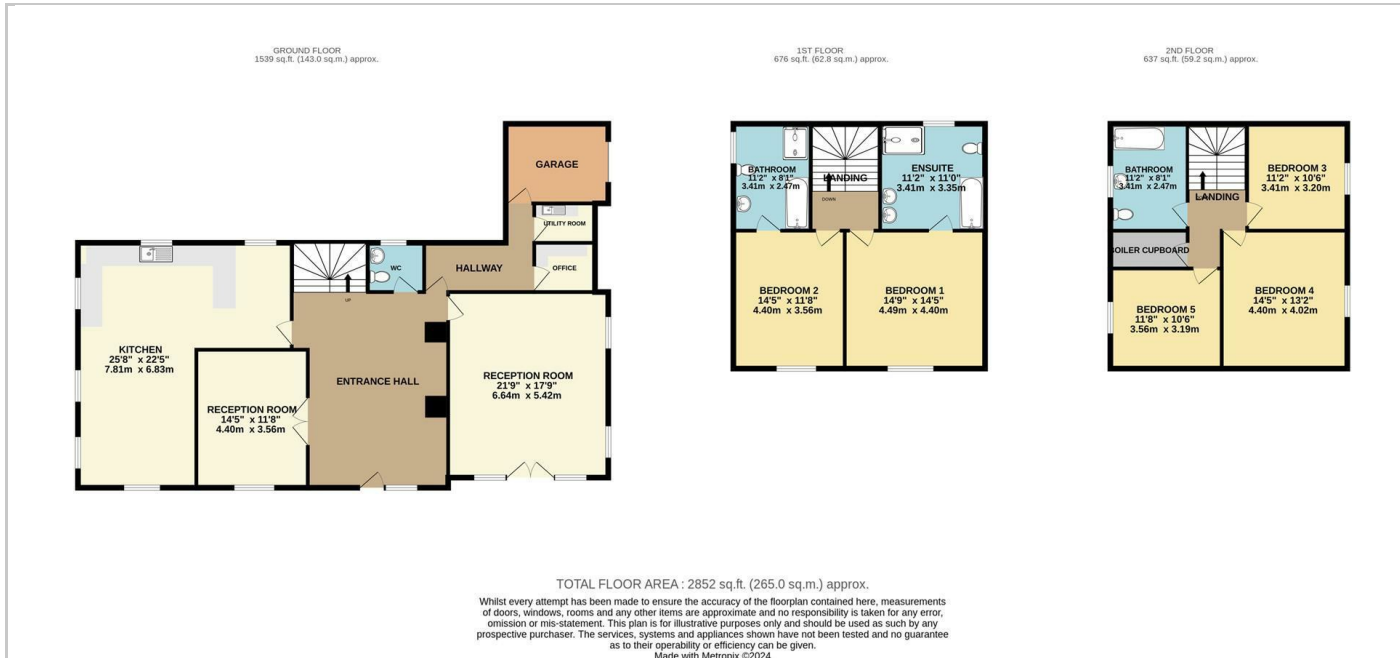
£5,500 Per Calendar Month

BB
brownbrand.co.uk

- Available Immediately
- Unique Opportunity
- 5 Bedrooms 2 En-Suites
- Private Gated Driveway
- Garage & Ample Parking
- 1 Mile From Prestbury Village
- Idyllic Setting
- Georgian Features

THE PROPERTY

A rare opportunity has arisen to live in this grand and imposing Georgian farmhouse in a stunning and idyllic rural, yet not isolated, setting about 1 mile from Prestbury village and equidistant from Alderley Edge and Wilmslow. The Georgian period boasts elegant exteriors, spacious rooms & tall ceilings. Properties built in this period were built to be spacious and comfortable, with grand proportions and a heightened sense of space and light. The accommodation is ideally suited to family occupation and the surrounding grounds and gardens are beautifully kept. A contribution will be sought for the gardens upkeep. Adequate parking for residents and visitors is provided. There are five bedrooms and three bathrooms arranged (two en-suite) over the first and second floors, all enjoying stunning views of the surrounding gently undulating countryside to the hills beyond. The gated gravel driveway leads around the property to a parking area at the rear/side with a garage and carport. Georgian properties in this area of Cheshire are rare to find, especially one restored to this standard. For such a property to come to the rental market is also a rarity and for the right tenant this could be a wonderful move.



SITUATION

Directions

221 London road, Hadleigh, SS7 2RD
Tel: Email: