



Durham Wharf Drive, TW8

£415 Per week

A well-proportioned one double bedroom apartment in excellent condition with a spacious living area and a private balcony. The property is located right next to Brentford Docks and the River Thames.

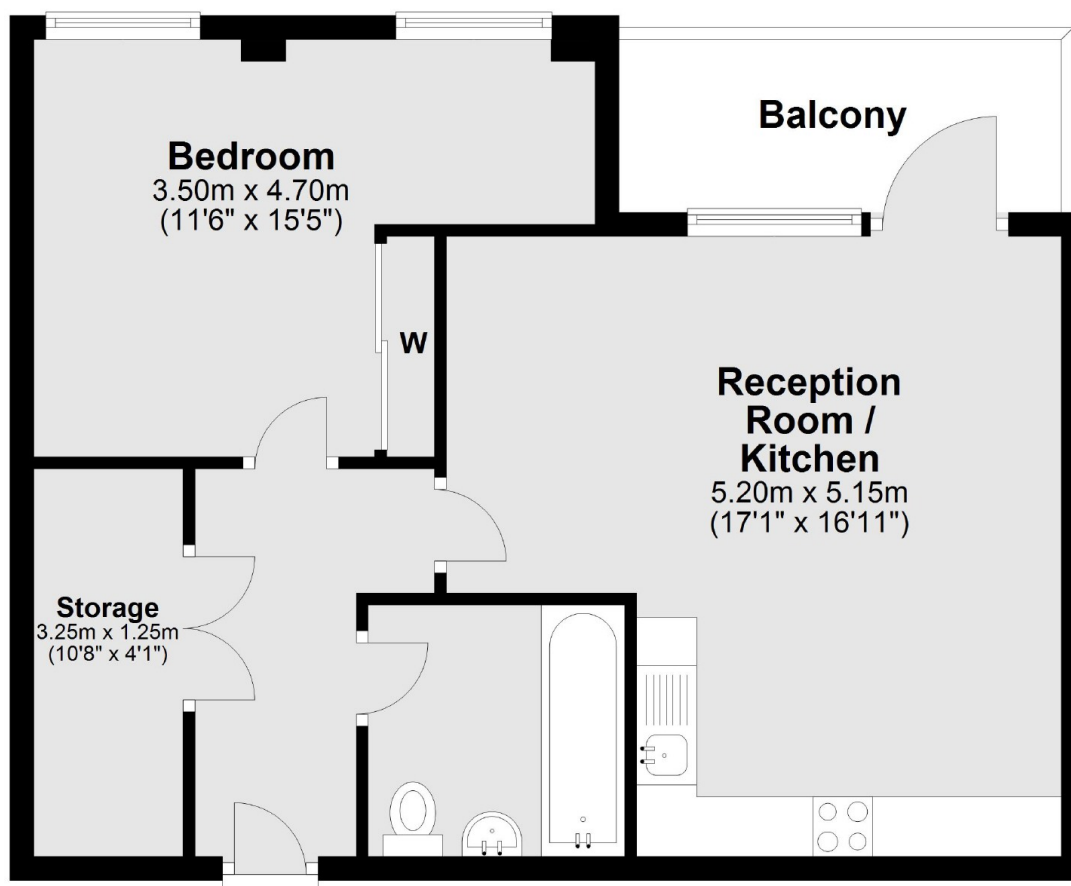
Durham Wharf Drive is located around half a mile of the main square of Brentford High Street and Brentford station. You also have the bus routes that travel along the High Street.

Features

- Excellent Condition
- Close To The River
- Private Balcony
- Spacious Living
- Great Location
- Transport Links

Durham Wharf Drive, London, TW8

Third Floor



Total area: approx. 52.4 sq. metres (564.4 sq. feet)

Dexters

Brentford
194 High Street
Brentford
TW8 8LB
Lettings
020 8939 6077

Energy Rating: B. We aim to make our particulars both accurate and reliable. However they are not guaranteed; nor do they form part of an offer or contract. If you require clarification on any points then please contact us, especially if you're traveling some distance to view. Please note that appliances and heating systems have not been tested and therefore no warranties can be given as to their good working order.

 **RICS** | Regulated
Estate Agent
and Letting Agent

[dexters.co.uk](https://www.dexters.co.uk)