



The Parsonage Eridge Road

, Crowborough, TN6 2SP

Asking price £825,000

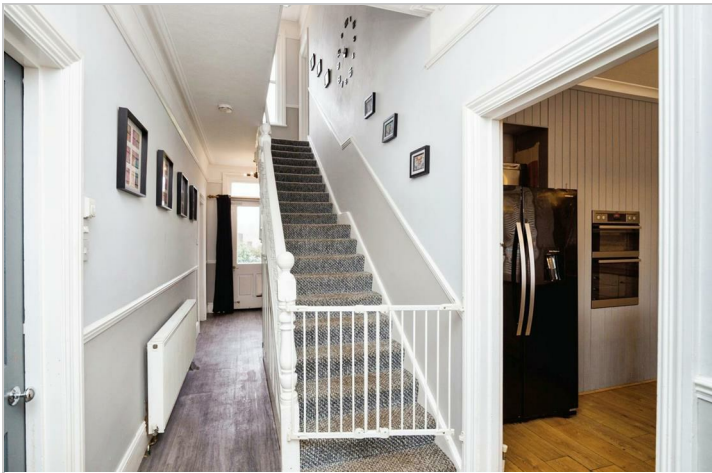


The Parsonage Eridge Road

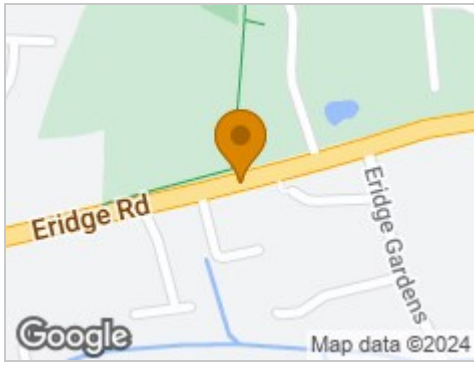
, Crowborough, TN6 2SP

Asking price £825,000





Road Map



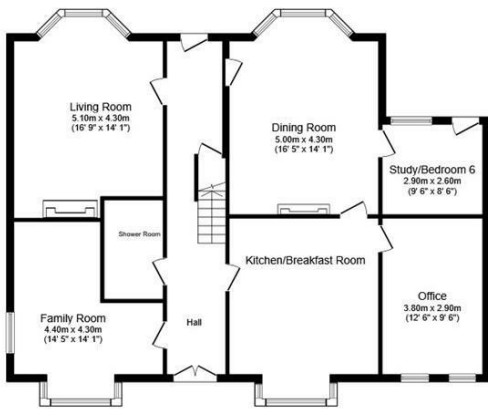
Hybrid Map



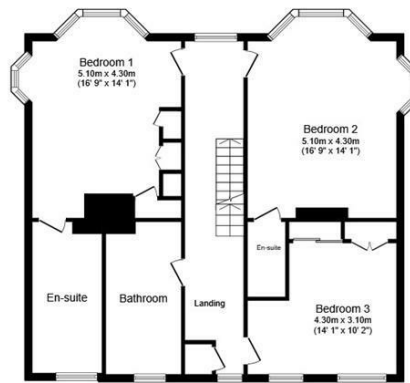
Terrain Map



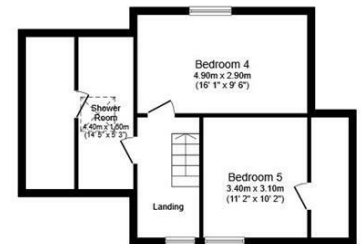
Floor Plan



Ground Floor



First Floor



Second Floor

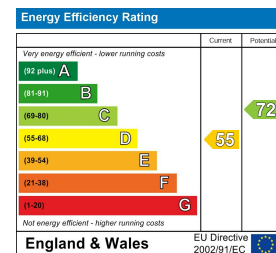
Total floor area 271.9 m² (2,926 sq.ft.) approx

This floor plan is for illustrative purposes only. It is not drawn to scale. Any measurements, floor areas (including any total floor area), openings and orientation are approximate. No details are guaranteed, they cannot be relied upon for any purpose and they do not form part of any agreement. No liability is taken for any error, omission or misstatement. A party must rely upon its own inspection(s).
Powered by www.focalagent.com

Viewing

Please contact our Crowborough Office on 01892 280435 if you wish to arrange a viewing appointment for this property or require further information.

Energy Efficiency Graph



These particulars, whilst believed to be accurate are set out as a general outline only for guidance and do not constitute any part of an offer or contract. Intending purchasers should not rely on them as statements of representation of fact, but must satisfy themselves by inspection or otherwise as to their accuracy. No person in this firm's employment has the authority to make or give any representation or warranty in respect of the property.