



25A Austins Mead

Hemel Hempstead, HP3 0JX

£1,200 Per Month

Nestled in the charming village of Bovingdon, Hemel Hempstead, this well-presented one-bedroom flat offers a delightful living experience. Situated on the first floor of a purpose-built block, the property spans an inviting 461 square feet, providing a comfortable and functional space for modern living.

Upon entering, you will find a bright and airy reception room, perfect for relaxation or entertaining guests. The flat features a well-appointed bedroom that promises a peaceful retreat, along with a neatly designed bathroom that caters to all your needs.

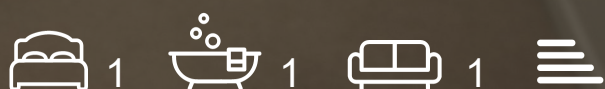
The village location adds to the appeal, offering a sense of community and tranquillity, while still being conveniently close to local amenities. This property is ideal for first-time buyers, professionals, or those looking to downsize.

We highly recommend a viewing to fully appreciate the charm and potential of this lovely flat. Don't miss the opportunity to make this delightful space your new home.

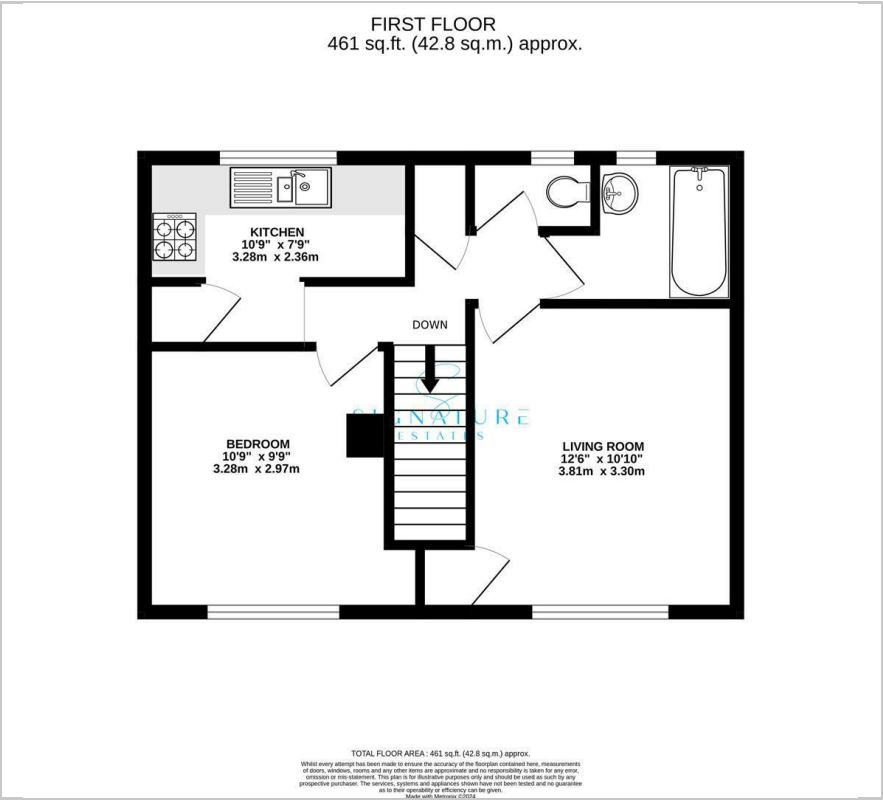
- One Bedroom
- Village Location
- Viewing Advised
- Council Tax Band C
- First Floor
- Easy Access to Local Ammenities
- Well Presented
- Peaceful Location

Viewing

Please contact our Bovingdon Office on 01923262666 if you wish to arrange a viewing appointment for this property or require further information.



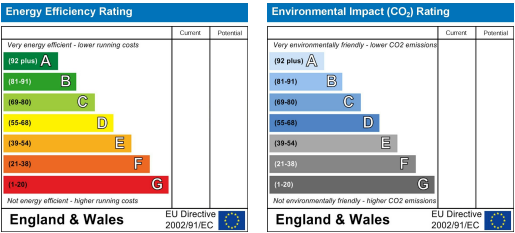
Floor Plan



Area Map



Energy Efficiency Graph



These particulars, whilst believed to be accurate are set out as a general outline only for guidance and do not constitute any part of an offer or contract. Intending purchasers should not rely on them as statements of representation of fact, but must satisfy themselves by inspection or otherwise as to their accuracy. No person in this firm's employment has the authority to make or give any representation or warranty in respect of the property.