



6 Fieldway

Hemel Hempstead, HP3 0EY

£575,000

This beautifully refurbished three-bedroom semi-detached home in Bovingdon offers the perfect blend of modern living and everyday convenience. Ideal for families or those seeking extra space, it features an impressive open-plan kitchen and dining area, finished to a high standard — perfect for both relaxed meals and entertaining guests.

The property also boasts a cozy, inviting lounge — a perfect retreat for unwinding after a busy day. Upstairs, you will find three well-proportioned bedrooms, offering comfortable and versatile accommodation for a growing family, guests, or those needing a home office or dressing room.

The converted garage provides valuable versatility, ideal for additional storage, a home office, or even a hobby room to suit your lifestyle.

Parking is easy, with space for three vehicles, and daily errands are made simple with local shops just a short walk away.

More than just a house, this property offers a lifestyle of comfort, style, and accessibility. Whether you're looking for your forever home or a smart investment, this is an opportunity not to be missed.

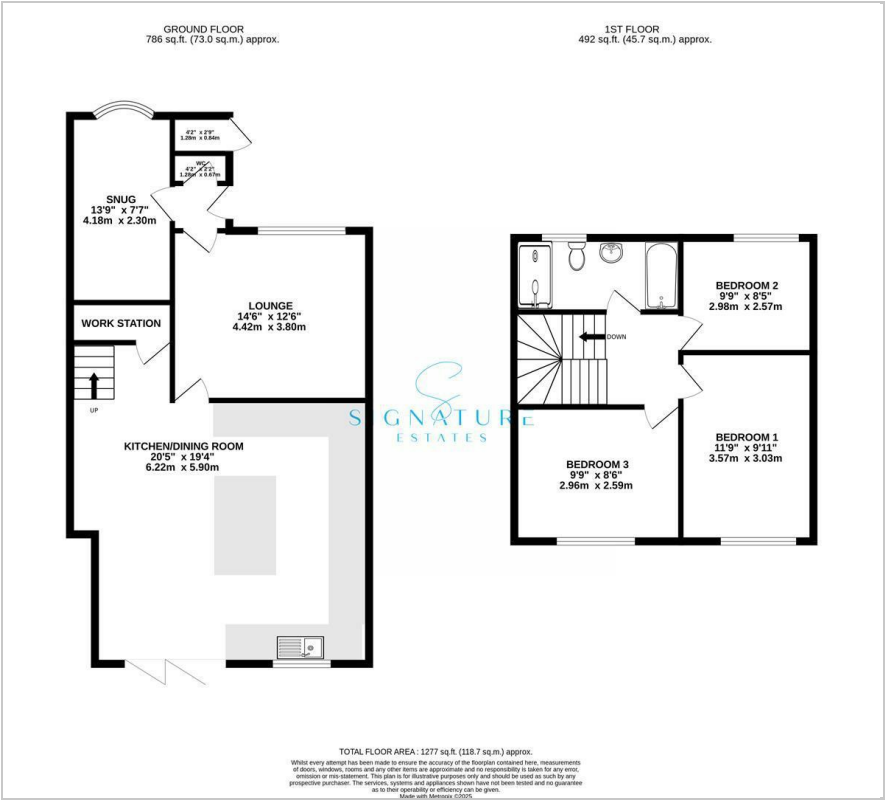
Viewing

Please contact our Bovingdon Office on 01923262666 if you wish to arrange a viewing appointment for this property or require further information.

- Beautifully Presented Three Bedroom Semi
- Converted Garage Into Usable Living Space
- Large Open Plan Kitchen Diner
- Downstairs WC
- Four Piece Bathroom
- Driveway For Two Cars
- Spacious Garden
- Book Your Viewing Today



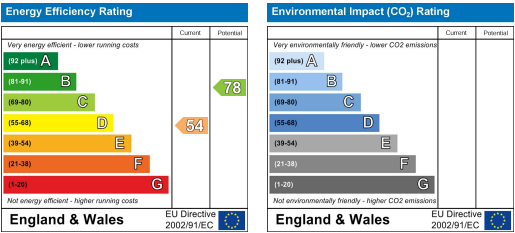
Floor Plan



Area Map



Energy Efficiency Graph



These particulars, whilst believed to be accurate are set out as a general outline only for guidance and do not constitute any part of an offer or contract. Intending purchasers should not rely on them as statements of representation of fact, but must satisfy themselves by inspection or otherwise as to their accuracy. No person in this firms employment has the authority to make or give any representation or warranty in respect of the property.