



Westbrook Cottage Bushfield Road

Hemel Hempstead, HP3 0DR

£750,000

Westbrook Cottage is a traditional semi detached family home positioned along a private leafy road in the commuter-friendly village of Bovingdon.

Situated on an expansive plot, this home offers you the opportunity to create something really quite special. The potential to extend the property (subject to planning) to both the side and the rear quite literally opens up so many architectural design possibilities that this property offers something for everyone.

- EXTENSION POTENTIAL!!
- BEAUTIFUL LARGE PLOT
- PRIVATE ROAD
- NO UPPER CHAIN
- THREE BEDROOMS
- TWO RECEPTION ROOMS
- DESIRABLE LOCATION
- AMAZING GARDEN

Viewing

Please contact our Bovingdon Office on 01923262666 if you wish to arrange a viewing appointment for this property or require further information.



3



2

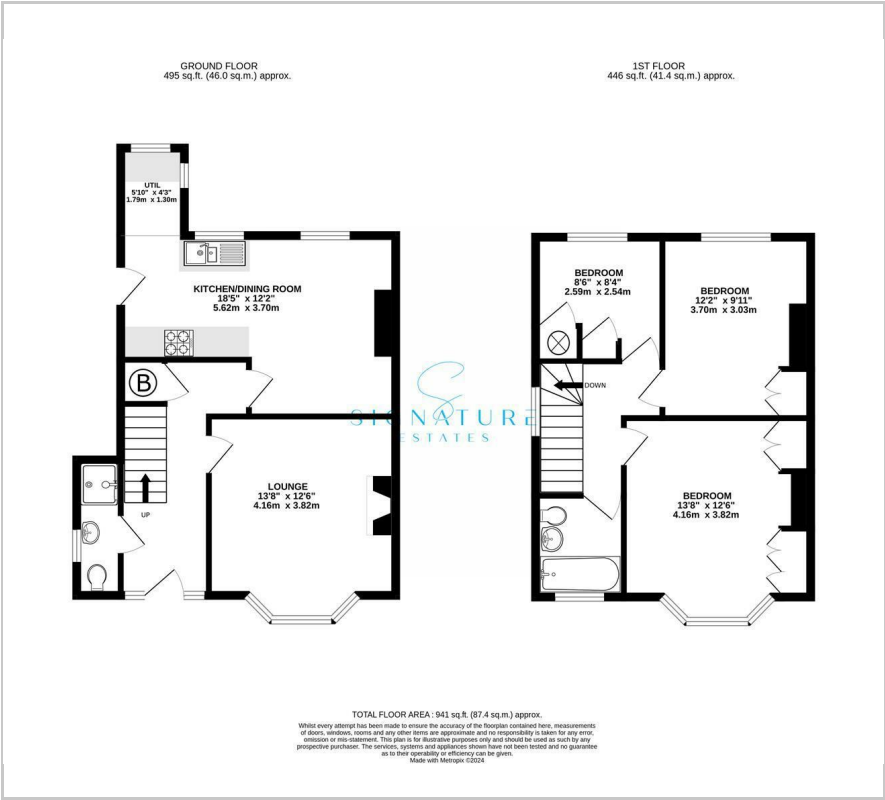


2



D

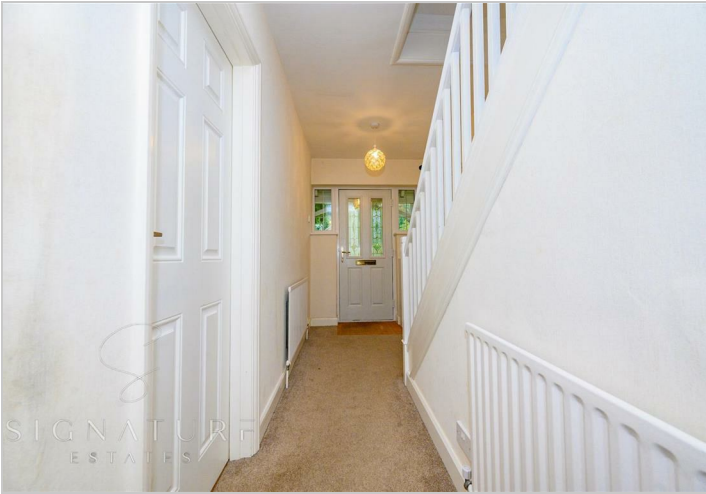
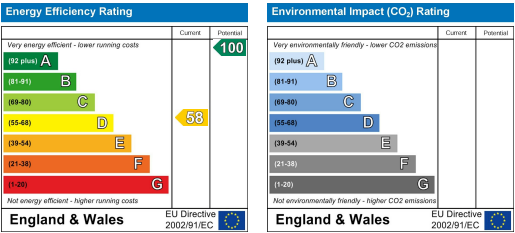
Floor Plan



Area Map



Energy Efficiency Graph



These particulars, whilst believed to be accurate are set out as a general outline only for guidance and do not constitute any part of an offer or contract. Intending purchasers should not rely on them as statements of representation of fact, but must satisfy themselves by inspection or otherwise as to their accuracy. No person in this firms employment has the authority to make or give any representation or warranty in respect of the property.