



1 Low Meadow

Aylesbury, HP22 5ZX

£450,000

Nestled in the charming road of Low Meadow, Weston Turville, this beautifully maintained semi-detached house offers a delightful blend of modern living and serene countryside views. Built in 2019 by the reputable W E Black, this property spans an impressive 827 square feet and is perfect for those seeking a comfortable and stylish home.

Upon entering, you are greeted by a well-appointed reception room that provides a warm and inviting atmosphere, ideal for both relaxation and entertaining. The house boasts two spacious bedrooms, including a master suite complete with an en suite bathroom, ensuring privacy and convenience. A thoughtfully designed family bathroom and a downstairs WC add to the practicality of the layout.

One of the standout features of this property is the stunning field views that can be enjoyed from the rear, offering a peaceful backdrop to daily life. The outdoor space is complemented by parking for two vehicles, a rare find in this desirable location.

This home is not only beautifully kept throughout but also benefits from modern amenities, making it an excellent choice for first-time buyers, small families, or those looking to downsize. With its attractive features and prime location, this property is sure to appeal to a wide range of prospective buyers. Don't miss the opportunity to make this lovely house your new home.

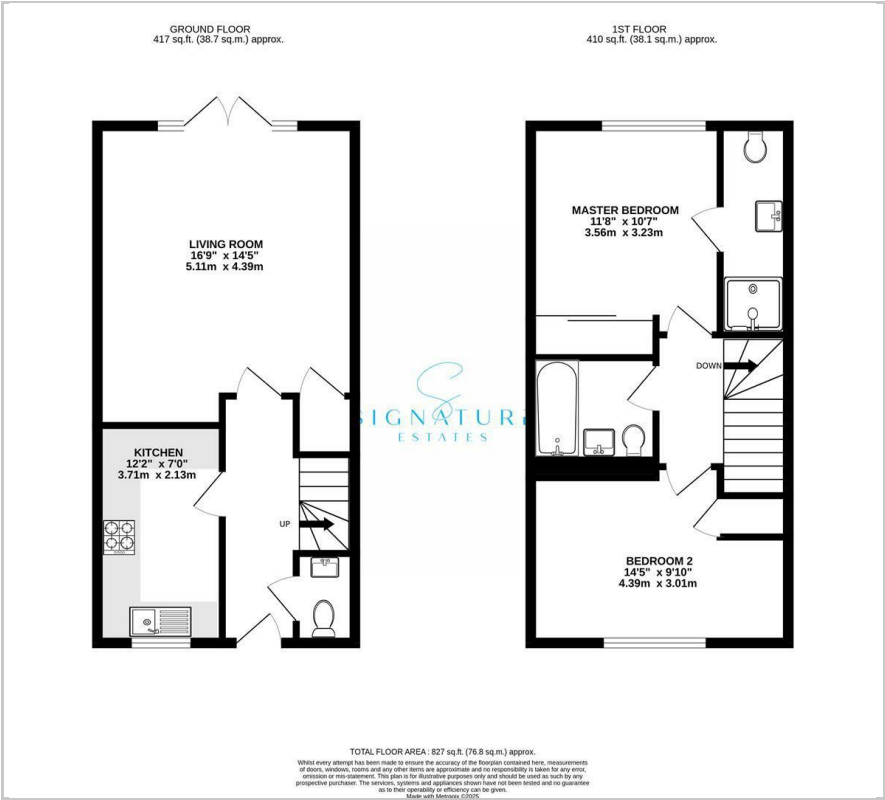
- Two Bedroom Semi Detached
- High Specification Throughout
- Built By W E Black in 2019
- Field Views Behind The Property
- Modern Cottage Style
- Two Parking Spaces
- Two Doubled Bedrooms One With En Suite
- Large Downstairs Reception Room

Viewing

Please contact our Bovingdon Office on 01923262666 if you wish to arrange a viewing appointment for this property or require further information.



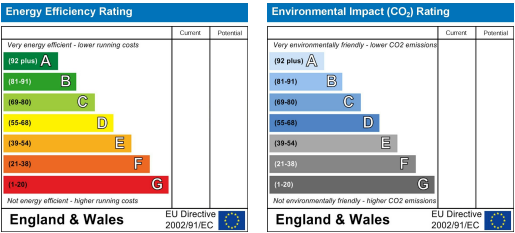
Floor Plan



Area Map



Energy Efficiency Graph



These particulars, whilst believed to be accurate are set out as a general outline only for guidance and do not constitute any part of an offer or contract. Intending purchasers should not rely on them as statements of representation of fact, but must satisfy themselves by inspection or otherwise as to their accuracy. No person in this firms employment has the authority to make or give any representation or warranty in respect of the property.