



SIGNATURE
ESTATES

6 Ennerdale Drive

Watford, WD25 0NG

Offers Over £500,000

Welcome to Ennerdale Drive, Watford - a charming location for this delightful end terrace house. This modern property, constructed in 2003, offers a perfect blend of style and comfort.

Step inside to discover a well-presented interior boasting three bedrooms, ideal for a growing family or those in need of extra space. The property features a well presented rear garden, perfect for relaxing outdoors or entertaining guests on a sunny day.

Convenience is key with parking available, ensuring you never have to worry about finding a spot after a long day. The property's contemporary design adds a touch of elegance to the overall appeal, making it a truly inviting space to call home.

Don't miss the opportunity to make this house your own and enjoy the modern amenities it has to offer. Ennerdale Drive is ready to welcome you - come and experience the comfort and convenience it provides.

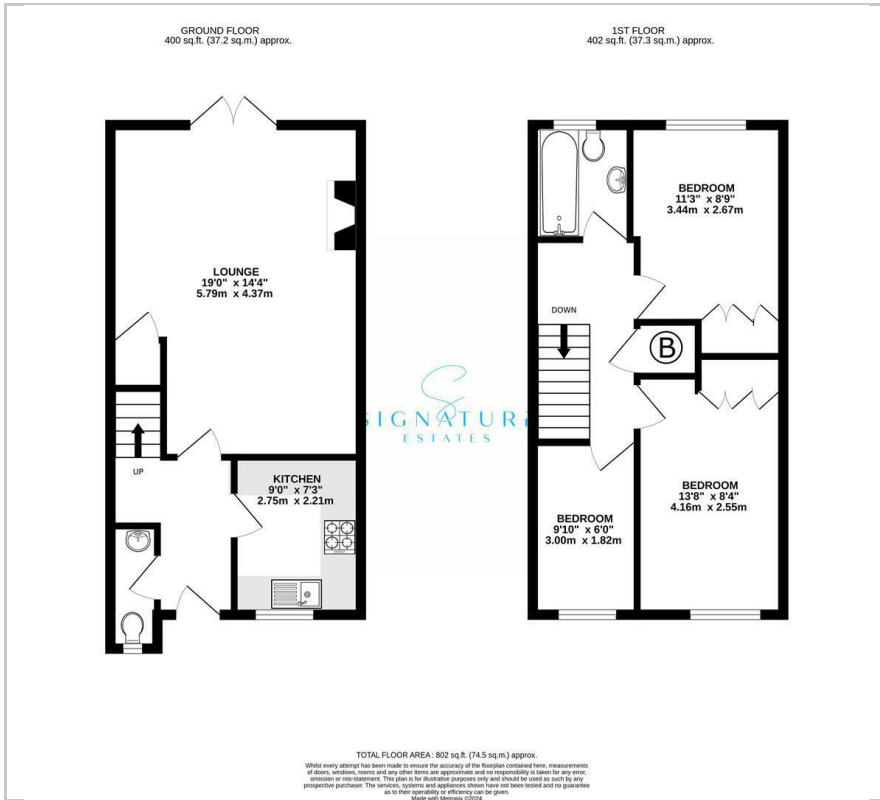
Viewing

Please contact our Bovingdon Office on 01923262666 if you wish to arrange a viewing appointment for this property or require further information.

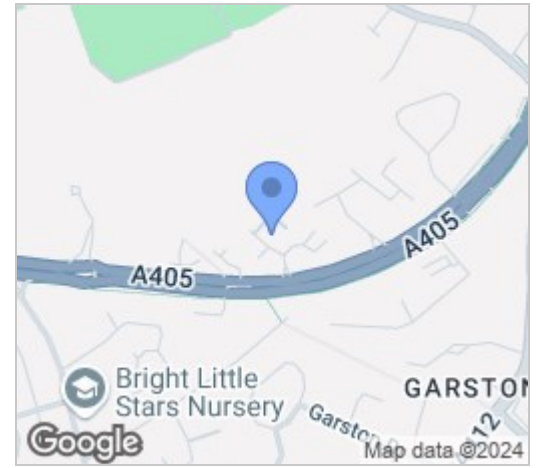
- Three Bedrooms
- End of Terrace
- Gas Heating System
- Off Road Parking
- Modern
- Rear Garden
- Easy Access to Local Amenities
- Cul de Sac Location
- Beautifully Presented
- Ideal Family Home



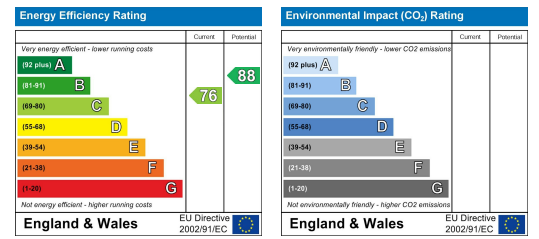
Floor Plan



Area Map



Energy Efficiency Graph



These particulars, whilst believed to be accurate are set out as a general outline only for guidance and do not constitute any part of an offer or contract. Intending purchasers should not rely on them as statements of representation of fact, but must satisfy themselves by inspection or otherwise as to their accuracy. No person in this firm's employment has the authority to make or give any representation or warranty in respect of the property.

10 High Street, Bovington, Hertfordshire, HP3 0HG

T: 01923262666 | E: bovington@signaturestates.co.uk | www.signaturestates.co.uk