



10 Gadeview

Hemel Hempstead, HP1 1UF

Asking Price £170,000

A well presented Two Bedroom, Two Reception Room 1st floor retirement apartment with balcony. Exclusively for the over 60's and a short walk from the town/shopping centre, picturesque Gadebridge Park and Historic Hemel Hempstead Old Town. This home boasts a Resident Manager, 24 hour Emergency Careline. The property features Fitted kitchen. Shower room, lounge, three bedrooms, entrance hall with built in storage. Communal garden. Communal parking. Suitable for independent persons aged 60 and over. Offered for sale with No Upper Chain.

- Over 60's Only
- Two Bedrooms & Two Reception Room
- Town Center Location
- Lift
- Communal Garden
- Residents Lounge
- House Manager
- Balcony
- First Floor
- No Upper Chain

Viewing

Please contact our Bovingdon Office on 01923262666 if you wish to arrange a viewing appointment for this property or require further information.



2



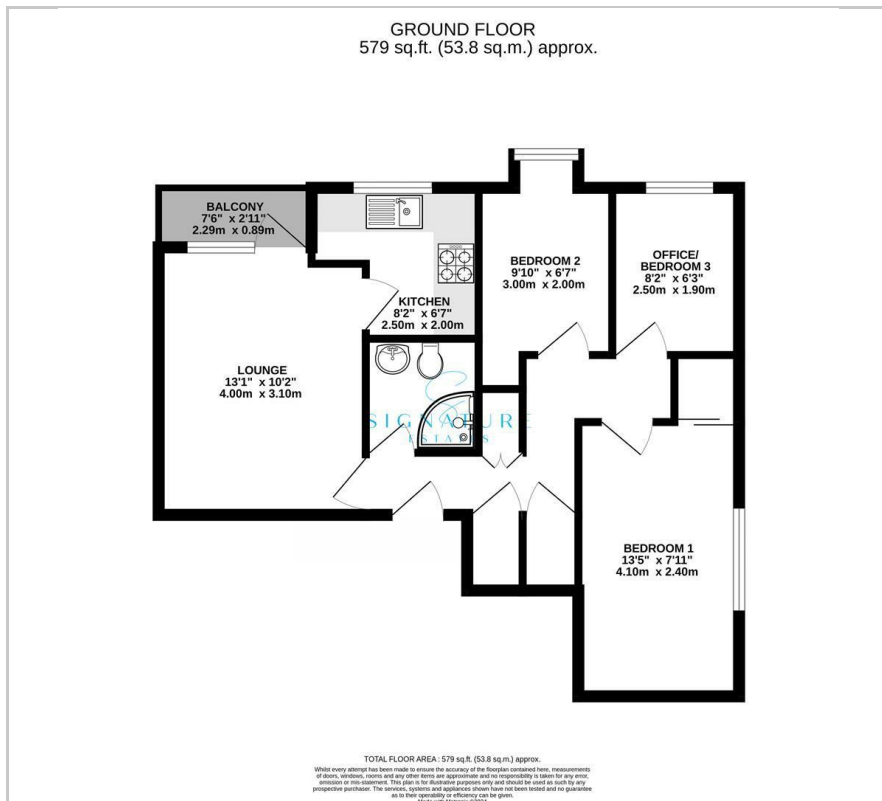
1



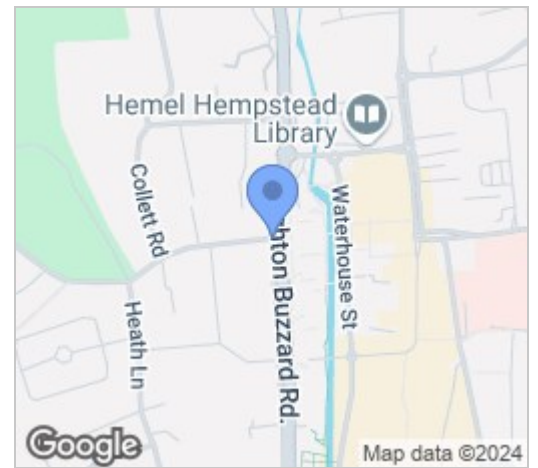
2



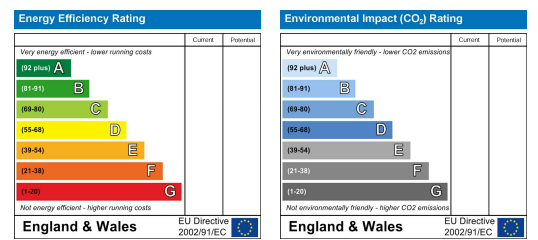
Floor Plan



Area Map



Energy Efficiency Graph



These particulars, whilst believed to be accurate are set out as a general outline only for guidance and do not constitute any part of an offer or contract. Intending purchasers should not rely on them as statements of representation of fact, but must satisfy themselves by inspection or otherwise as to their accuracy. No person in this firm's employment has the authority to make or give any representation or warranty in respect of the property.

10 High Street, Bovingdon, Hertfordshire, HP3 0HG

T: 01923262666 | E: bovingdon@signatureestates.co.uk | www.signatureestates.co.uk