

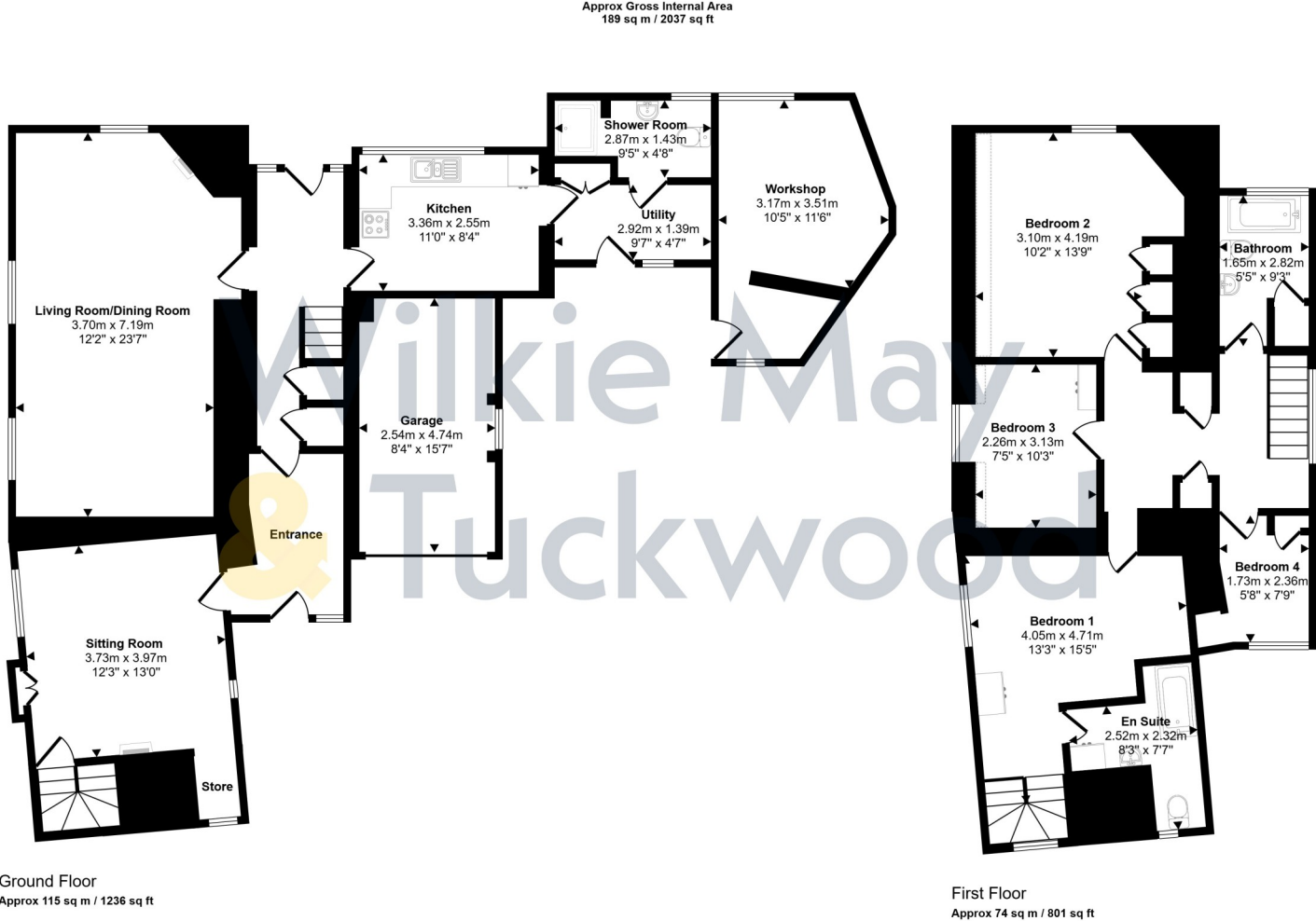


Mill Lane,
Watchet, TA23 0AR.
£375,000 Freehold



Wilkie May
& Tuckwood

Floor Plan



This floorplan is only for illustrative purposes and is not to scale. Measurements of rooms, doors, windows, and any items are approximate and no responsibility is taken for any error, omission or mis-statement. Icons of items such as bathroom suites are representations only and may not look like the real items. Made with Made Snappy 360.

Description

A unique detached four bedroom cottage, with private riverside gardens, and scope to extend or remodel, situated in the heart of Watchet with No Onward Chain.

- Detached Cottage
- 4 Bedrooms
- Good Sized Plot
- Flexible Accommodation
- Private Gardens

The property comprises a detached property that was formerly two cottages, situated on a good sized plot that could be remodelled to create a spacious family home, or split to provide an annexe, or rental property to generate income. The cottage has been occupied by the same family for over 50 years, and enjoys private gardens, a garage, and parking but would benefit from modernisation.

The accommodation in brief comprises; part glazed wooden door with inset stained-glass detail into spacious Entrance Hall; door into Sitting Room; double aspect, wood block flooring, open fire with brick surround, recessed storage, winding staircase to first floor, exposed ceiling beam. Hallway; with under stairs storage, glazed doors to the rear gardens. Living Room/Dining Room; double aspect with open fire, tiled surround and hearth. Kitchen/Breakfast Room; with aspect to rear, with a range of wooden cupboards and drawers under a marble effect rolled edge worktop with inset one and half bowl sink and drainer, mixer tap over, tiled splashbacks, space for electric cooker, integrated fridge, space for breakfast table with fitted bench, door into Utility Room; with tiled floor, door to yard, space and plumbing for a washing machine, space for further white goods, door into ground floor Shower Room; with tiled floor, tiled shower cubicle with electric Mira jump shower over, low level WC, pedestal wash basin.

Stairs to the first floor landing; with built in storage cupboards. Bedroom 1; aspect to rear overlooking the garden, 3 built in wardrobes. Bedroom 2; (En-Suite) with aspect to side, built in wardrobe, door into Bathroom; with airing cupboard housing a foam lagged

cylinder with immersion switch (please note that this tank just serves this bathroom), panelled bath, pedestal wash basin, low level WC. Bedroom 3; aspect to side, built in cupboard. Bedroom 4; aspect to front, built in cupboard. Family Bathroom; with panelled bath, tiled surround, low level WC, pedestal wash basin, boiler cupboard housing Veissmann combi boiler for central heating and hot water.



OUTSIDE: The property has off road parking for one vehicle, with double timber gates leading to the front yard which could also be utilised for further parking. In the yard there is a workshop and stores. The Garage is adjacent to the front door, and has an up and over door. The rear gardens are very private and established, incorporating a number of outside stores. The gardens are laid mainly to lawn with planted borders.



GENERAL REMARKS AND STIPULATION

Tenure: The property is offered for sale Freehold by private treaty

Services: Mains water, mains electricity, mains drainage, mains gas.

Local Authority: Somerset Council, Deane House, Belvedere Road, Taunton. TA1 1HE.

Council Tax Band: D

Parking: is one off road parking space with scope to create further off road parking as well as a garage.

Broadband: For an indication of specific speeds and supply or coverage in the area, we would advise interested buyers to use the Ofcom checker: checker.ofcom.org.uk/en-gb/broadband-coverage

Mobile: For an indication of supply or coverage in the area, we would advise interested buyers to use the Ofcom checker: checker.ofcom.org.uk/en-gb/mobile-coverage

Flood Risk: For information relating to flood risk in the area, we would advise interested buyers to use the below government checker: flood-map-for-planning.service.gov.uk/location

IMPORTANT NOTICE Wilkie May & Tuckwood for themselves and for the vendors of the property, whose agents they are, give notice that: 1. the particulars are intended to give a fair and substantially correct overall description for the guidance of intending purchaser and do not constitute part of an offer or contract. Prospective purchasers and lessees ought to seek their own professional advice. 2. All descriptions, dimensions, areas, reference to condition and necessary permissions for use and occupation and other details are given in good faith, and are believed to be correct, but any intending purchasers should not rely on them as statements or representations of fact, but must satisfy themselves by inspection or otherwise as to the correctness of each of them. 3. No person in the employment of Wilkie May & Tuckwood has any authority to make or give any representations or warranty

whatever in relation to this property on behalf of Wilkie May & Tuckwood, nor enter into any contract on behalf of the vendor. 4. No responsibility can be accepted for any expenses incurred by intending purchasers in inspecting properties which have been sold, let or withdrawn. Photographs taken and details prepared February 2024. MEASUREMENTS AND OTHER INFORMATION All measurements are approximate. While we endeavour to make our sales particular accurate and reliable, if there is any point which is of particular importance to you, please contact the office and we will be pleased to check the information with you.

Code of Practice for Residential Estate Agents: Effective from 1 August 2011:

'8. Financial Evaluation 8a At the time that an offer has been made and is being considered by the seller, you must take reasonable steps to find out from the prospective buyer the source and availability of his funds for buying the property and pass this information to the seller. Such information will include whether the prospective buyer needs to sell a property, requires a mortgage, claims to be a cash buyer or any combination of these. Such relevant information that is available should be included in the Memorandum of Sale having regard to the provisions of the Data Protection Act.8b These reasonable steps must continue after acceptance of the offer until exchange of contracts (in Scotland, conclusion of missives) and must include regular monitoring of the prospective buyer's progress in achieving the funds required, and reporting such progress to the seller.