



www.chrystals.co.im

30 Royal Shore, The Promenade, Port Erin, IM9 6PT
Asking Price £699,500

30 Royal Shore, The Promenade, Port Erin, IM9 6PT

Asking Price £699,500

Stunning modern 3rd floor energy efficient purpose built apartment with enviable sea and Port Erin Bay views. Excellent position close to coastal walks, golf, fishing, water sports and bustling town centre. Luxury accommodation comprises spacious open plan lounge/kitchen/dining area, 2 good sized bedrooms both en-suite with master having dressing area and bathroom, utility, separate w.c., and 2 store rooms. Outside there is a large balcony enjoying lovely views. 1 allocated under ground parking space.



LOCATION

Travelling through Port Erin along Station Road, bear right onto The Promenade and proceed ahead. The 'Royal Shore' Apartments can be found approx. 500 yards along on the right hand side.

ENTRANCE HALLWAY

Light and airy entrance hall. Electronically controlled thermostat, Cloaks cupboard, cupboard housing electric hot water cylinder and additional chest freezer.

CLOAKROOM

6' 3" x 3' 5" (1.90m x 1.04m)

Includes wall-mounted wooden hat and coat rack with cubbies and shelf.

UTILITY ROOM

6' 1" x 6' 2" (1.85m x 1.88m)

Separate laundry room with German cabinets, Siemens washing machine and tumble dryer, stone worktop, ironing board and stainless steel sink unit.

OPEN PLAN LOUNGE/KITCHEN/DINING

38' 0" x 13' 10" (11.57m x 4.21m)

Spacious open plan living space. Contemporary, fully fitted German kitchen with stone worktops incorporating stainless steel 1½ bowl sink unit, chrome mixer tap, integrated double oven, induction hob, stainless steel extractor hood, matching stone splashbacks, integrated fridge/freezer and dishwasher. Downlighters. Sliding patio doors leading to:

LARGE BALCONY

22' 4" x 4' 11" (6.80m x 1.50m)

Spacious contemporary style balcony offering fantastic expansive views over Port Erin Bay and Bradda Head

with private access from living area and principal bedroom.

BEDROOM 1

32' 3" x 10' 2" (9.82m x 3.10m)

Generously proportioned master bedroom with stunning sea views, access to balcony.

EN-SUITE BATHROOM

11' 2" x 6' 2" (3.40m x 1.88m)

Luxury contemporary en-suite bathroom comprising bath and separate oversized tiled glass shower, chrome fittings and electric towel radiator.

DRESSING AREA

7' 7" x 5' 8" (2.31m x 1.73m)

Bespoke cabinetry and fully mirrored with wall mounted vanity table.

BEDROOM 2

14' 0" x 10' 7" (4.26m x 3.22m)

Light and airy bedroom overlooking landscaped courtyard with water feature.

EN-SUITE

7' 5" x 4' 11" (2.26m x 1.50m)

Spacious en-suite bathroom with tiled glass shower, window, chrome fittings and electric towel radiator.

STORE ROOM

9' 5" x 3' 9" (2.87m x 1.14m)

Private lighted insulated secure storeroom located inside main/front lobby.

OUTSIDE

Stylish communal areas provide lift access to all levels including secure underground allocated parking space and direct access to spacious landscaped inner courtyard. Secure underground parking.

SERVICES

Mains water, drainage and electricity. Electric heating (provision for off-peak electric power for heating and hot water). uPVC glazing throughout. Secure video entry. Lift access to all floors. The property is approx 3 years old with remainder of NHBC 10 year warranty (from approx 2022). Dandara build - 'The St James' style apartment. Fibre ready.

POSSESSION

Leasehold. Remainder of 999 year lease from approx 2022. Management Company in place. Management Fees approx £2,506 per annum. Vacant possession on completion of purchase. The company do not hold themselves responsible for any expenses which may be incurred in visiting the same should it prove unsuitable or have been let, sold or withdrawn. DISCLAIMER - Notice is hereby given that these particulars, although believed to be correct do not form part of an offer or a contract. Neither the Vendor nor Chrystals, nor any person in their employment, makes or has the authority to make any representation or warranty in relation to the property. The Agents whilst endeavouring to ensure complete accuracy, cannot accept liability for any error or errors in the particulars stated, and a prospective purchaser should rely upon his or her own enquiries and inspection. All Statements contained in these particulars as to this property are made without responsibility on the part of Chrystals or the vendors or lessors.



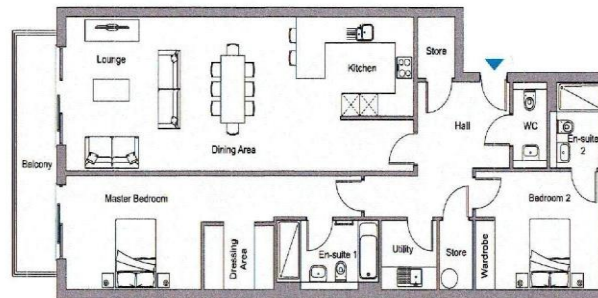
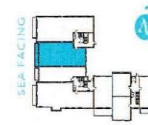


THE ST. JAMES

2 BEDROOM

APARTMENTS 26, 28, 30 & 32

Internal Area 1344.0 sq ft / 124.8 sq m



Lounge/Kitchen/Dining	Master Bedroom	Dressing Area	En-Suite 1	Bedroom 2	En-Suite 2	Utility	Balcony
11.59m x 4.22m	9.83m x 3.11m	2.32m x 1.73m	3.47m x 1.88m	3.23m x 4.21m	2.34m x 1.74m	1.84m x 1.88m	1.50m x 6.81m
38'0" x 13'10" max	32'3" x 10'2" max	7'7" x 5'8"	11'2" x 6'2" max	10'7" x 14'0"	7'8" x 5'8"	6'0" x 6'2"	4'11" x 22'4"

Notice is hereby given that these particulars, although believed to be correct do not form part of an offer or a contract. Neither the Vendor nor Chrystals, nor any person in their employment, makes or has the authority to make any representation or warranty in relation to the property. The Agents whilst endeavouring to ensure complete accuracy, cannot accept liability for any error or errors in the particulars stated, and a prospective purchaser should rely upon his or her own enquiries and inspection. All Statements contained in these particulars as to this property are made without responsibility on the part of Chrystals or the vendors or lessors.

Since 1854



DOUGLAS

31 Victoria Street
Douglas IM1 2SE
T. 01624 623778
E. douglas@chrystals.co.im

PORT ERIN

23 Station Road
Port Erin IM9 6RA
T. 01624 833903
E. porterin@chrystals.co.im

COMMERCIAL

Douglas Office: 01624 625100, commercial@chrystals.co.im

RENTALS

Douglas Office: 01624 625300, douglasrentals@chrystals.co.im

Directors: Shane Magee M.R.I.C.S.; Neil Taggart BSc (Hons), M.R.I.C.S.; Joney Kerruish BSc (Hons), M.R.I.C.S.; Dafydd Lewis BSc (Hons), M.R.I.C.S., MA (Cantab), Dip Surv Prac. Registered in the Isle of Man No. 34808, Chrystal Bros, Stott & Kerruish Ltd. Trading as Chrystals. Registered Office, 31 Victoria Street, Douglas, Isle of Man IM1 2SE.