



www.chrystals.co.im

Flat 4, 11 Mount Bradda, Douglas, IM1 4AR
Asking Price £220,000

Flat 4, 11 Mount Bradda, Douglas, IM1 4AR

Asking Price £220,000

A well-presented top floor apartment in a central and convenient location of Douglas. Accessed via a private entrance to the rear, the property offers a good degree of privacy and convenience. The accommodation is bright and generously proportioned, comprising a fitted kitchen, a comfortable living space, and a separate dining area set slightly above the main living room, with useful built-in storage. There is a modern shower room, a spacious main bedroom, and an additional second bedroom. The location is ideal for those seeking easy access to Douglas town centre, with the promenade, shops, and local amenities all close by. Outside, the apartment benefits from a raised patio area currently used for outdoor seating, along with an allocated parking space. An excellent opportunity for owner-occupiers or buyers looking for a solid investment. Viewing is highly recommended.



LOCATION

Travel up Bucks Road towards the Rosemount Traffic lights and continue straight ahead. Turn left onto Woodbourne Square and up Hawarden Avenue and Mount Bradda is the first left. Access to the apartment is via the rear down a service lane.

KITCHEN

12' 2" x 7' 7" (3.7m x 2.3m)

INNER HALL

BATHROOM

7' 10" x 6' 11" (2.4m x 2.1m)

LIVING ROOM

15' 9" x 13' 9" (4.8m x 4.2m)

DINING ROOM

13' 9" x 10' 2" (4.2m x 3.1m)

UTILITY ROOM

3'10" x 9'10" (1.2m x 3m)

BEDROOM

17' 9" x 17' 1" (5.4m x 5.2m)

BEDROOM

12' 6" x 12' 6" (3.8m x 3.8m)

OUTSIDE

Parking to the rear. Access to the apartment is also via the rear of the building with its own private access.

TENURE

LEASEHOLD - Remainder of 999 year lease.

SERVICE CHARGE: £60 per month.

Management Company is Mount Bradda Limited and each flat owner has shares in the company.

SERVICES

Mains water, electricity and drainage. Gas central heating.

VIEWING

Viewing is strictly by appointment through CHRYSTALS. Please inform us if you are unable to keep appointments.

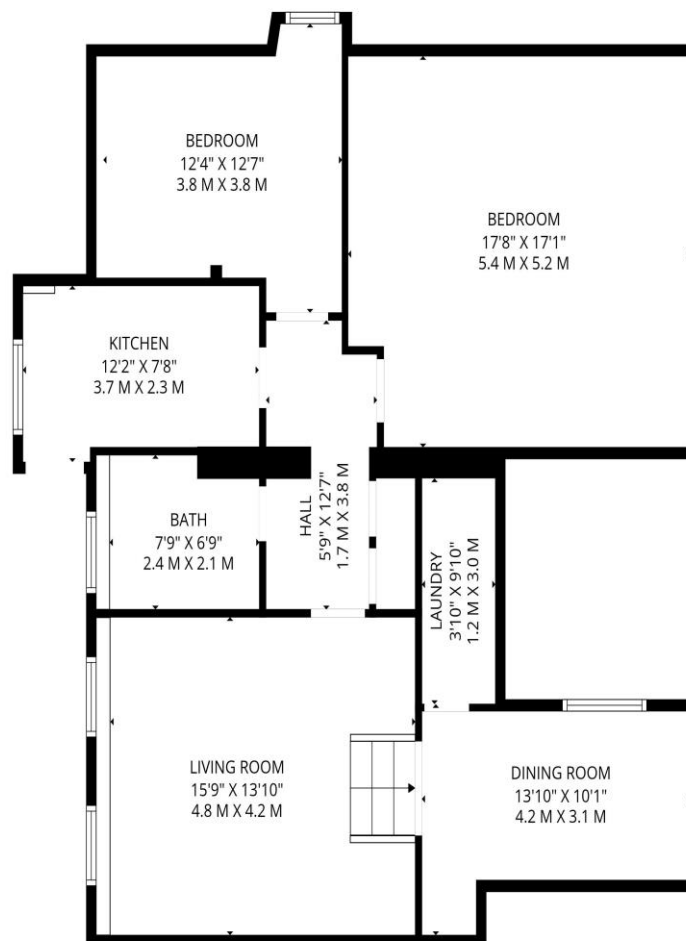
POSSESSION

Vacant on completion. The company do not hold themselves responsible for any expenses which may be incurred in visiting the same should it prove unsuitable or have been let, sold or withdrawn. DISCLAIMER - Notice is hereby given that these particulars, although believed to be correct do not form part of an offer or a contract. Neither the Vendor nor Chrystals, nor any person in their employment, makes or has the authority to make any representation or warranty in relation to the property. The Agents whilst endeavouring to ensure complete

accuracy, cannot accept liability for any error or errors in the particulars stated, and a prospective purchaser should rely upon his or her own enquiries and inspection. All Statements contained in these particulars as to this property are made without responsibility on the part of Chrystals or the vendors or lessors.







TOTAL: 878 sq. ft, 82 m2

1st floor: 878 sq. ft, 82 m2

EXCLUDED AREAS: LOW CEILING: 188 sq. ft, 17 m2, WALLS: 85 sq. ft, 7 m2



Since 1854



DOUGLAS

31 Victoria Street
Douglas IM1 2SE
T. 01624 623778
E. douglas@chrystals.co.im

PORT ERIN

23 Station Road
Port Erin IM9 6RA
T. 01624 833903
E. porterin@chrystals.co.im

COMMERCIAL

Douglas Office: 01624 625100, commercial@chrystals.co.im

RENTALS

Douglas Office: 01624 625300, douglasrentals@chrystals.co.im

Directors: Shane Magee M.R.I.C.S.; Neil Taggart BSc (Hons), M.R.I.C.S.; Joney Kerruish BSc (Hons), M.R.I.C.S.; Dafydd Lewis BSc (Hons), M.R.I.C.S., MA (Cantab); Dip Surv Prac. Registered in the Isle of Man No. 34808, Chrystal Bros, Stott & Kerruish Ltd. Trading as Chrystals. Registered Office, 31 Victoria Street, Douglas, Isle of Man IM1 2SE.