



www.chrystals.co.im

225 Cherry Orchard, Bridson Street, Port Erin, IM9 6AN

Asking Price £169,000

225 Cherry Orchard, Bridson Street, Port Erin, IM9 6AN

Asking Price £169,000

Newly refurbished 2nd floor apartment, in the heart of Port Erin with all the local amenities on your doorstep and the picturesque beachfront minutes walk away. The generous layout features an open plan kitchen/dining/lounge leading out onto a good sized balcony, 2 double bedrooms and shower room. There is lift access to all floors. Outside, you'll find a convenient generous parking area. No onward chain.





LOCATION

Travelling into Port Erin from the Four Roads roundabout, proceed ahead along Station Road. Turn 3rd right into Bridson Street (opposite the garage) and the Cherry Orchard Apartments can be found on the right hand side.

COMMUNAL ENTRANCE HALL

Stairs and lift to all floors. Rear access door to general parking area.

HALLWAY

Karndean flooring.

OPEN PLAN

KITCHEN/DINING/LOUNGE

18' 10" x 15' 5" (5.73m x 4.71m)

Wonderful, spacious, light and airy room with good range of white wall and base units with contrasting worktops incorporating electric oven, ceramic hob, round stainless steel sink unit, washer/dryer, extractor fan, tiled splashbacks. Karndean flooring. Door to:

BALCONY

11' 8" x 4' 0" (3.55m x 1.22m)

Pleasant outlook across the village and towards distant hills. Tiled floor.

BEDROOM 1

12' 1" x 7' 10" (3.69m x 2.40m)

Good sized double room with built-in wardrobes and dressing table.

BEDROOM 2

7' 8" x 14' 7" (2.34m x 4.45m)

Double room with built-in wardrobes, 2 bedside drawers, mirror.

SHOWER ROOM

Shower cubicle, w.c., hand wash basin in unit, white ladder style heated towel rail, tiled floor.

OUTSIDE

General parking area to rear.

SERVICES

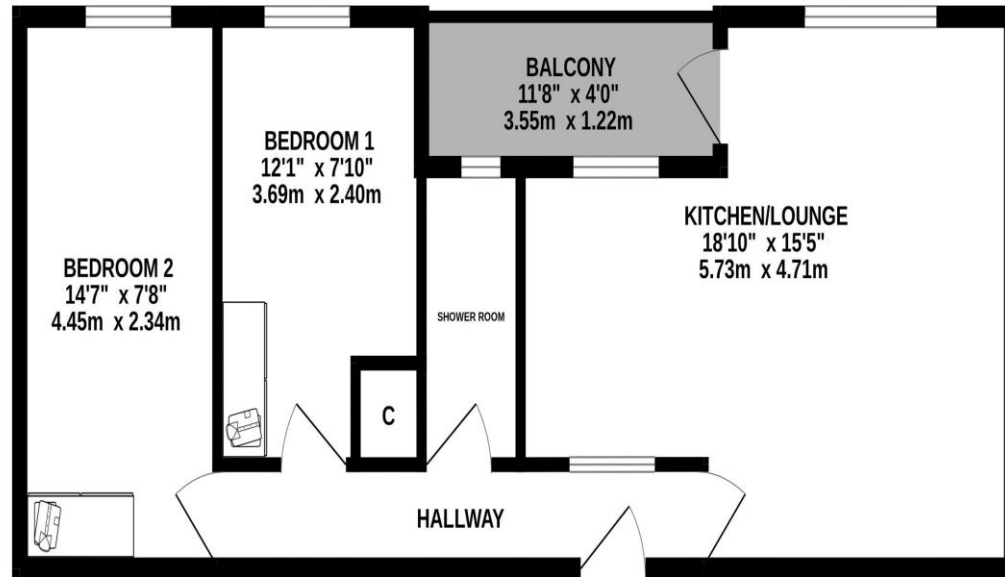
Mains water, drainage and electricity. New PVC double glazing. New electric central heating. Manx Telecom Fibre ready.

POSSESSION

Leasehold. Management Company in place. New 999 year lease. Management Fees approximately £200 per month. NO PETS ALLOWED. The company do not hold themselves responsible for any expenses which may be incurred in visiting the same should it prove unsuitable or have been let, sold or withdrawn. DISCLAIMER - Notice is hereby given that these particulars, although believed to be correct do not form part of an offer or a contract. Neither the Vendor nor Chrystals, nor any person in their employment, makes or has the authority to make any representation or warranty in relation to the property. The Agents whilst endeavouring to ensure complete accuracy, cannot accept liability for any error or errors in the particulars stated, and a prospective purchaser should rely upon his or her own enquiries and inspection. All Statements contained in these particulars as to this property are made without responsibility on the part of Chrystals or the vendors or lessors.







Whilst every attempt has been made to ensure the accuracy of the floorplan contained here, measurements of doors, windows, rooms and any other items are approximate and no responsibility is taken for any error, omission or mis-statement. This plan is for illustrative purposes only and should be used as such by any prospective purchaser. The services, systems and appliances shown have not been tested and no guarantee as to their operability or efficiency can be given.
 Made with Metropix 6/2024

Since 1854



DOUGLAS
 31 Victoria Street
 Douglas IM1 2SE
 T. 01624 623778
 E. douglas@chrystals.co.im

PORT ERIN
 23 Station Road
 Port Erin IM9 6RA
 T. 01624 833903
 E. porterin@chrystals.co.im

COMMERCIAL
 Douglas Office: 01624 625100, commercial@chrystals.co.im

RENTALS
 Douglas Office: 01624 625300, douglasrentals@chrystals.co.im

Directors: Shane Magee M.R.I.C.S.; Neil Taggart BSc (Hons), M.R.I.C.S.; Joney Kerruish BSc (Hons), M.R.I.C.S.; Dafydd Lewis BSc (Hons), M.R.I.C.S., MA (Cantab), Dip Surv Prac.; Consultants: Keith Kerruish Registered in the Isle of Man No. 34808, Chrystal Bros, Stott & Kerruish Ltd. Trading as Chrystals. Registered Office, 31 Victoria Street, Douglas, Isle of Man IM1 2SE.