



www.chrystals.co.im

Belle Abbey Manor, Ballakilpheric, Colby, IM9 4AB
Asking price £1,400,000

Belle Abbey Manor, Ballakilpheric, Colby, IM9 4AB

Asking Price £1,400,000

'Belle Abbey Manor' is a handsome recently refurbished residence, with an elegant and welcoming feel, perfect for family living. The house has a very impressive open plan hall/sitting room/dining room, snug, quality breakfast kitchen, utility room, shower room and walk-in pantry/storage room. Upstairs are 3 large double bedrooms all en-suite, study/library and a superb 44ft family room/4th bedroom. Outside is a private well tended garden with far-reaching southerly views and large patio, sweeping driveway leading to detached garage and parking for several cars. A personal inspection is strongly recommended!





LOCATION

Travelling from Port Erin towards Colby on the A7, turn left at the old chapel signposted to Ballakilpheric. Proceed on for approximately 200 yards, where Belle Abbey Manor is located on the right hand side.

PORCH

Beautiful tiled floor . Double doors opening to :

OPEN PLAN HALL/SITTING ROOM/DINING ROOM

37' 9" x 27' 2" (11.51m x 8.28m)

Superb open plan living areas. Beautiful oak flooring throughout (underfloor heated). 2 elegant Marble fireplaces both with inset multi-fuel stoves. 2 x large bay windows offering lovely open field views.

SNUG

25' 10" x 16' 11" (7.87m x 5.16m)

Double French doors x 3 leading to rear outside patio area and garden. Quality oak flooring (Underfloor heated).

BREAKFAST KITCHEN

29' 2" x 19' 7" (8.89m x 5.98m)

Quality bespoke fitted breakfast kitchen - wall and base units with granite worktops comprising Belfast sink, integral dishwasher, integral fridge, Xpelair, tiled floor, large breakfast bar. Stable door to outside. Oak staircase leading to first floor.

INNER HALL

Tiled flooring. Fitted ladder to large mezzanine/storage area with Velux.

SHOWER ROOM

Modern contemporary suite comprising shower, wash hand basin in fitted unit, black ladder style heated towel rail, w.c., half wooden panelled walls, tiled floor, Xpelair.

UTILITY ROOM

12' 9" x 10' 8" (3.88m x 3.26m)

Generous room with fitted base units, marble worktops, Belfast sink, plumbing for washing machine, and space for vented dryer. Built-in double storage cupboards, boiler cupboard housing oil central heating boiler and Megaflo cylinder tank. 2 x Velux. Door to rear patio and garden.

WALK-IN PANTRY/STORE

7' 2" x 3' 11" (2.19m x 1.20m)

Fitted wall shelving, space for double fridge/freezer, tiled floor.

FIRST FOOR

LANDING

Solid oak flooring. Impressive glass roof light. Built-in airing cupboard. Cloaks cupboard. Stairs leading to bedroom 1. Staircase to second floor.

BEDROOM 3

26' 0" x 11' 10" (7.93m x 3.60m)

Quirky double bedroom with stairs leading to en-suite shower room. Oak flooring. Double wardrobes.

EN-SUITE SHOWER ROOM

Contemporary modern suite comprising shower, wash hand basin in fitted unit, w.c., tiled flooring, Xpelair. Velux window.

BEDROOM 2

23' 2" x 12' 4" (7.07m x 3.75m)

Front aspect with lovely garden and countryside views, and towards southern coastline. Fitted double wardrobes. Oak flooring.

EN-SUITE BATHROOM

Quality suite comprising oval bath, shower, black ladder style heated towel rail,, w.c., square wash hand basin in fitted unit, tiled floor, Xpelair.

MASTER BEDROOM

19' 5" x 15' 0" (5.92m x 4.58m)

Stunning room with high vaulted ceiling. Superb views towards southern coastline. Fitted double wardrobes. Oak flooring. Fitted oak ladder to study/library.

EN-SUITE BATHROOM

Luxurious quality bathroom comprising free-standing bath on raised plinth, double wash hand basin in fitted unit, tiled floor, w.c., walk-in shower, ladder style heated towel rail, Xpelair. Fitted window shutters. Lovely outlook!

STUDY/LIBRARY

13' 1" x 14' 5" (3.98m x 4.40m)

Accessed via ladder. Fitted book shelving, oak flooring, Vaulted ceiling with Velux.

SECOND FLOOR

BEDROOM 4/FAMILY ROOM

44' 0" x 19' 0" (13.41m x 5.79m)

Impressive large room with feature central glass floor window looking down onto first floor. 5 x Velux. Understairs storage. Lovely views over surrounding fields and towards southern coastline.

OUTSIDE

Beautifully tendered surrounding walled gardens mainly laid to lawn with well stocked flower beds. Private sunken paved patio area that's perfect for entertaining! Belfast sink with shower attachment. Oil tank. Sweeping block paved rear driveway leading to detached double garage and parking area.

DETACHED GARAGE

18' 4" x 18' 8" (5.59m x 5.69m)

Electric up and over door. Light and power.

SERVICES

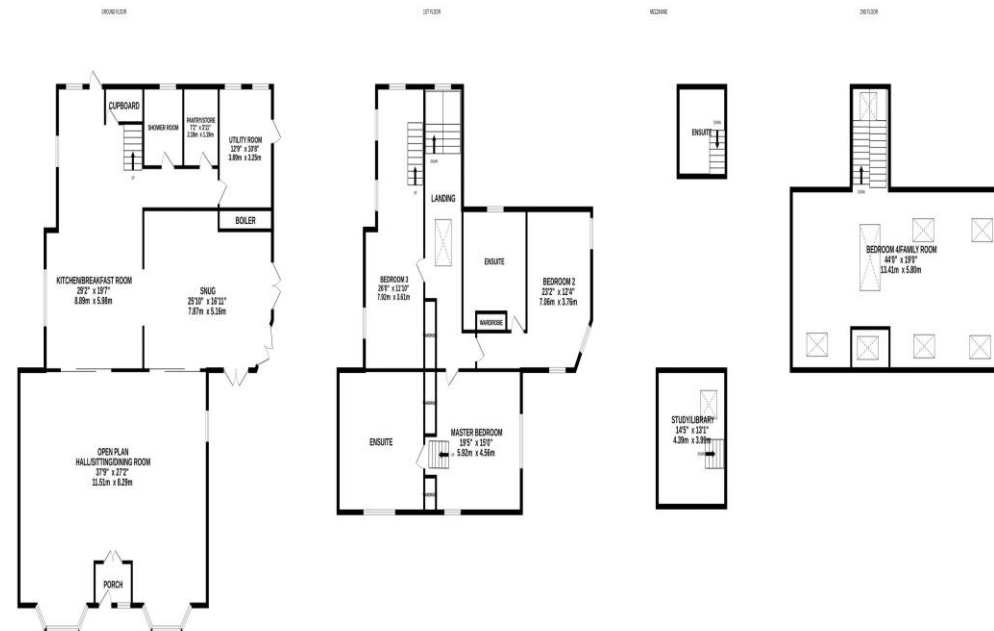
Mains drainage, water and electricity. Oil central heating. Underfloor heating to all ground floor rooms. Hardwood windows. Newly refurbished to high specification throughout.

POSSESSION

Freehold. Vacant possession on completion. No onward chain. The company do not hold themselves responsible for any expenses which may be incurred in visiting the same should it prove unsuitable or have been let, sold or withdrawn. DISCLAIMER - Notice is hereby given that these particulars, although believed to be correct do not form part of an offer or a contract. Neither the Vendor nor Chrystals, nor any person in their employment, makes or has the authority to make any representation or warranty in relation to the property. The Agents whilst endeavouring to ensure complete accuracy, cannot accept liability for any error or errors in the particulars stated, and a prospective purchaser should rely upon his or her own enquiries and inspection. All Statements contained in these particulars as to this property are made without responsibility on the part of Chrystals or the vendors or lessors.







Whilst every attempt has been made to ensure the accuracy of the floorplan contained here, measurements of doors, windows, rooms and any other items are approximate and no responsibility is taken for any error, omission or mis-statement. This plan is for illustrative purposes only and should be used as such by any prospective purchaser. The services, systems and appliances shown have not been tested and no guarantee as to their operability or efficiency can be given.
Made with Metropix ©2025

Notice is hereby given that these particulars, although believed to be correct do not form part of an offer or a contract. Neither the Vendor nor Chrystals, nor any person in their employment, makes or has the authority to make any representation or warranty in relation to the property. The Agents whilst endeavouring to ensure complete accuracy, cannot accept liability for any error or errors in the particulars stated, and a prospective purchaser should rely upon his or her own enquiries and inspection. All Statements contained in these particulars as to this property are made without responsibility on the part of Chrystals or the vendors or lessors.

Since 1854



DOUGLAS
31 Victoria Street
Douglas IM1 2SE
T. 01624 623778
E. douglas@chrystals.co.im

PORT ERIN
23 Station Road
Port Erin IM9 6RA
T. 01624 833903
E. porterin@chrystals.co.im

COMMERCIAL
Douglas Office: 01624 625100, commercial@chrystals.co.im

RENTALS
Douglas Office: 01624 625300, douglasrentals@chrystals.co.im

Directors: Shane Magee M.R.I.C.S.; Neil Taggart BSc (Hons), M.R.I.C.S.; Joney Kerruish BSc (Hons), M.R.I.C.S.; Dafydd Lewis BSc (Hons), M.R.I.C.S., MA (Cantab), Dip Surv Prac.; Consultants: Keith Kerruish
Registered in the Isle of Man No. 34808, Chrystal Bros, Stott & Kerruish Ltd. Trading as Chrystals. Registered Office, 31 Victoria Street, Douglas, Isle of Man IM1 2SE.