



[www.chrystals.co.im](http://www.chrystals.co.im)

Elderbanks, The Crofts, Castletown, IM9 1LW  
**Asking Price £1,495,000**



Elderbank, The Crofts, Castletown, IM9 1LW

**Asking Price £1,495,000**

One of the finest period town houses of the Island, nestled in the conservation area of historic Castletown. Elderbank is a most handsome limestone house with a grand, elegant and welcoming feel, perfect for family living. The principal house has a very impressive entrance hall with bifurcated staircase which leads to 4 Reception Rooms, Wonderful Kitchen, Study, spacious Garden room and Utility Room. There are 5/6 Bedrooms with 3 ensuites and Family Bathroom. Outside is a private, walled garden with automated gates and ample parking for several cars. A personal inspection is strongly recommended.

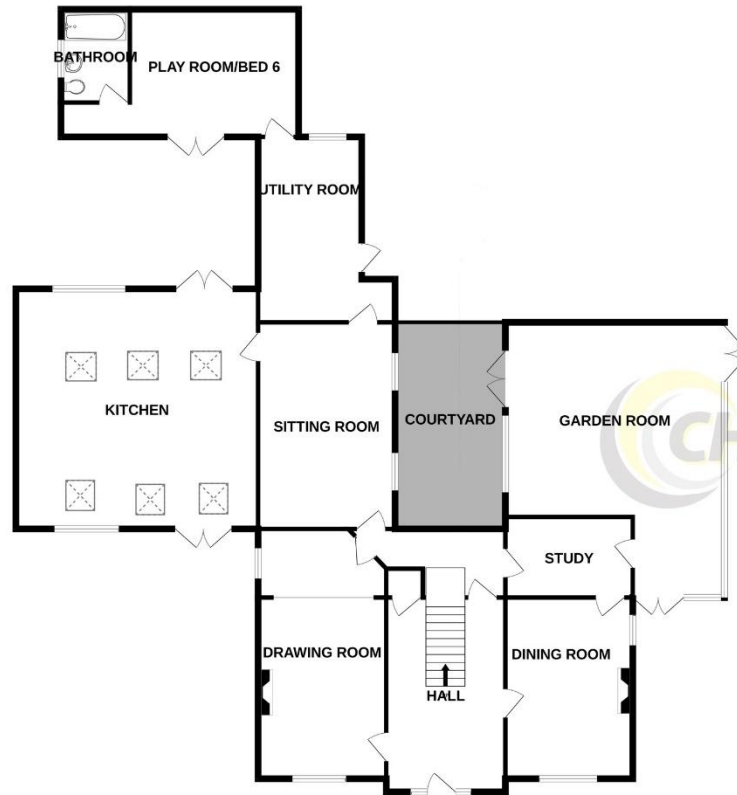








GROUND FLOOR



1ST FLOOR



2ND FLOOR



Measurements are approximate. Not to scale. Illustrative purposes only  
Made with Metropix ©2024





Since 1854

#### DOUGLAS

31 Victoria Street  
Douglas IM1 2SE  
T. 01624 623778  
E. douglas@chrystals.co.im

#### PORT ERIN

23 Station Road  
Port Erin IM9 6RA  
T. 01624 833903  
E. porterin@chrystals.co.im

#### COMMERCIAL

Douglas Office: 01624 625100, commercial@chrystals.co.im

#### RENTALS

Douglas Office: 01624 625300, douglasrentals@chrystals.co.im



Directors: Shane Magee M.R.I.C.S.; Neil Taggart BSc (Hons), M.R.I.C.S.; Joney Kerruish BSc (Hons), M.R.I.C.S.; Dafydd Lewis BSc (Hons), M.R.I.C.S., MA (Cantab), Dip Surv Prac.  
Registered in the Isle of Man No. 34808, Chrystal Bros, Stott & Kerruish Ltd. Trading as Chrystals. Registered Office, 31 Victoria Street, Douglas, Isle of Man IM1 2SE.