



Barn Owl Cottage (PLOT), Cronk Y Dhooney, Ballakilpheric, Colby, IM9 4BS
www.chrystals.co.im

Asking Price £185,000

Barn Owl Cottage (PLOT), Cronk Y Dhooney, Ballakilpheric, Colby, IM9 4BS

Asking Price £185,000

Exciting opportunity to purchase a plot of land in a superb semi-rural location with excellent uninterrupted views over the surrounding countryside through to the southern coastline. The approx. 0.011 acre plot (21 x 23 metres square) has planning permission in place for a 3 bedroom detached property and has front lane access. Planning ref no. 22/01320/B or full plans can be viewed in Port Erin office.





LOCATION

Travelling from Port Erin towards Colby on the A7 turn left at the White Chapel signposted Ballakilpheric. Proceed ahead up the Ballakilpheric Road until you reach a Methodist Church on the left hand side. Turn right directly opposite and proceed to the end of the track where Barn Owl Cottage (Plot) can be found straight ahead.

TENURE

Freehold.

VIEWING

STRICTLY BY APPOINTMENT ONLY through the Agents, Chrystals, Port Erin.

SERVICES

Water connected. Planning ref no. 22/01320/B (Planning in place until 25th January, 2026)

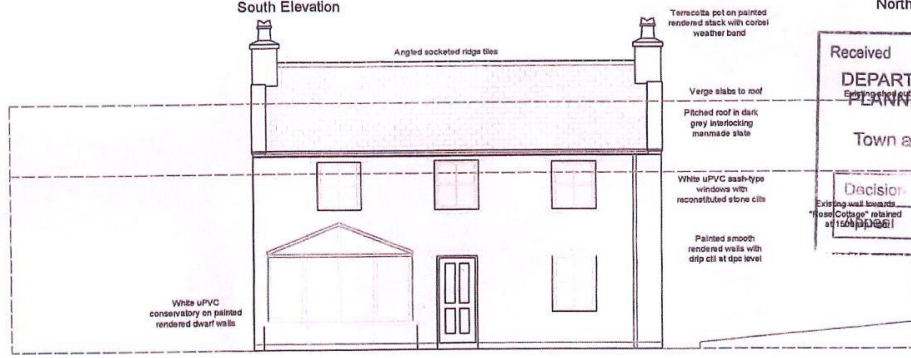
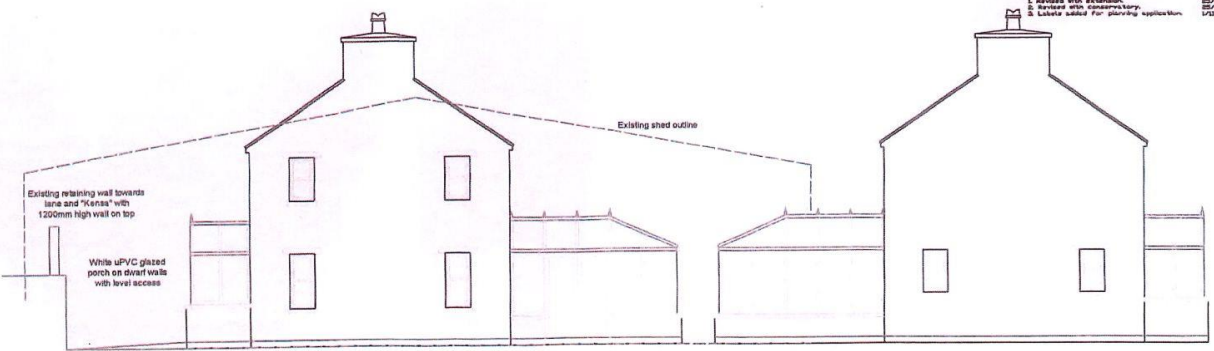
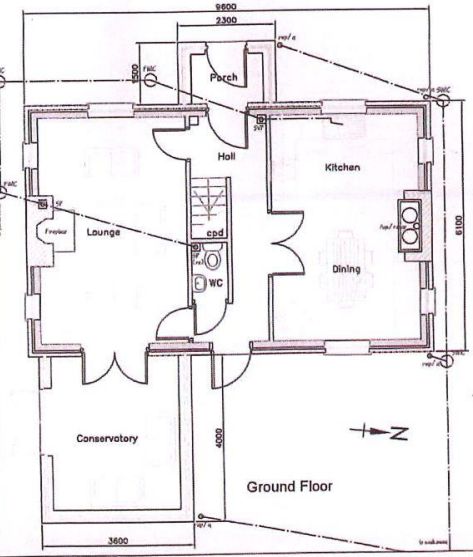
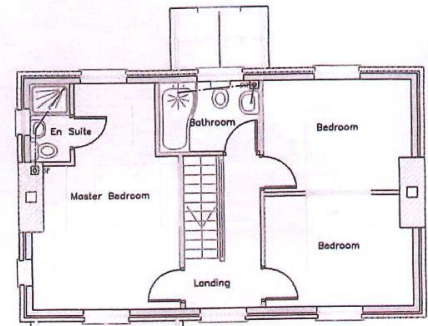
POSSESSION

On completion of purchase. No onward chain. The company do not hold themselves responsible for any expenses which may be incurred in visiting the same should it prove unsuitable or have been let, sold or withdrawn. DISCLAIMER - Notice is hereby given that these particulars, although believed to be correct do not form part of an offer or a contract. Neither the Vendor nor Chrystals, nor any person in their employment, makes or has the authority to make any representation or warranty in relation to the property. The Agents whilst endeavouring to ensure complete accuracy, cannot accept liability for any error or errors in the particulars stated, and a prospective purchaser should rely upon his or her own enquiries and inspection. All Statements contained in these particulars as to this

property are made without responsibility on the part of Chrystals or the vendors or lessors.



REVISIONS	DATE
1. Issue drawing	28/12/24
2. Revised with extension	28/12/24
3. Revised with supplementary	28/12/24
4. Details added for planning application	1/12/25



Received 12 04 25
 DEPARTMENT OF INFRASTRUCTURE
 PLANNING and BUILDING CONTROL
 DIVISION
 Town and Country Planning
 Decision



See drawing 10-J020-06 for section details

Since 1854



DOUGLAS

31 Victoria Street
Douglas IM1 2SE
T. 01624 623778
E. douglas@chrystals.co.im

PORT ERIN

23 Station Road
Port Erin IM9 6RA
T. 01624 833903
E. porterin@chrystals.co.im

COMMERCIAL

Douglas Office: 01624 625100, commercial@chrystals.co.im

RENTALS

Douglas Office: 01624 625300, douglasrentals@chrystals.co.im

Directors: Shane Magee M.R.I.C.S.; Neil Taggart BSc (Hons), M.R.I.C.S.; Joney Kerruish BSc (Hons), M.R.I.C.S.; Dafydd Lewis BSc (Hons), M.R.I.C.S., MA (Cantab), Dip Surv Prac.; Consultants: Keith Kerruish
Registered in the Isle of Man No. 34808, Chrystal Bros, Stott & Kerruish Ltd. Trading as Chrystals. Registered Office, 31 Victoria Street, Douglas, Isle of Man IM1 2SE.