



www.chrystals.co.im

Cliff View, Truggan Road, Port St Mary, IM9 5AX
Asking Price £299,500

Cliff View, Truggan Road, Port St Mary, IM9 5AX

Asking Price £299,500

SUITABLE FOR CASH BUYERS. Elegant detached double fronted house requiring renovation. Its elevated position provides fantastic uninterrupted views over the open Manx countryside towards Bay Ny Carrickey and Bradda Head. Accommodation comprises spacious lounge, dining room, kitchen and large utility, 3 double bedrooms, cloakroom and bathroom. Outside is an elevated front garden and large enclosed private south facing rear garden. Offered with no onward chain.





LOCATION

Travelling out of Port Erin on Station Road, take the 3rd exit on the roundabout, continue along towards Port St Mary. At the crossroads turn right onto Plantation Road, bear right onto Howe Road, then right onto Truggan Road. Cliff View can be found on the left hand side .

ENTRANCE PORCH

Original tiled floor, half glazed door to:

HALLWAY

Staircase to first floor.

CLOAKROOM

W.C, half tiled walls.

LOUNGE

11' 6" x 13' 7" (3.50m x 4.14m)

Super views. Large bay front window. Open fireplace.

DINING ROOM

12' 3" x 13' 7" (3.73m x 4.14m)

Lovely outlook across open fields and towards hills. Open fireplace. Opening to:

KITCHEN

6' 11" x 11' 6" (2.11m x 3.50m)

Base units, stainless steel sink unit.

UTILITY AREA

6' 11" x 11' 6" (2.11m x 3.50m)

Door to rear garden.

FIRST FLOOR

LANDING

BEDROOM 1

11' 6" x 12' 5" (3.50m x 3.78m)

Superb views.

BEDROOM 2

10' 4" x 12' 5" (3.15m x 3.78m)

Front aspect, views

BEDROOM 3

10' 4" x 9' 2" (3.15m x 2.79m)

Rear aspect. Loft access.

BATHROOM

Freestanding roll top bath, wash hand basin.

Front aspect with lovey views.

OUTSIDE

At the front of the property are steps to an elevated garden, to the rear is a large private south facing walled garden.

SERVICES

Mains water, drainage and electricity.

POSSESSION

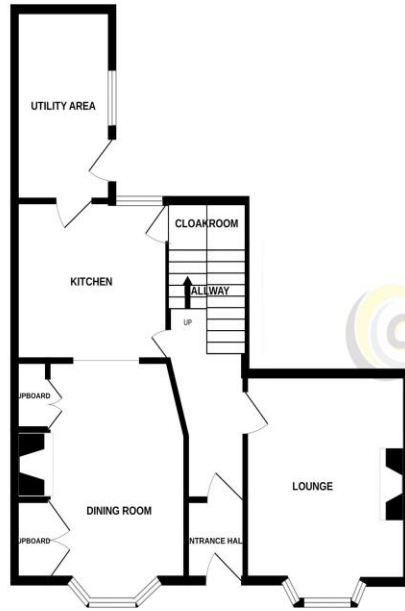
Freehold. Vacant possession on completion of sale. No onward chain. The company do not hold themselves responsible for any expenses which may be incurred in visiting the same should it prove unsuitable or have been let, sold or withdrawn. DISCLAIMER - Notice is hereby given that these particulars, although believed to be correct do not form part of an offer or a contract. Neither the Vendor nor Chrystals, nor any person in their employment, makes or has the authority to make any representation or warranty in relation to the property. The Agents whilst endeavouring to ensure complete accuracy, cannot accept

liability for any error or errors in the particulars stated, and a prospective purchaser should rely upon his or her own enquiries and inspection. All Statements contained in these particulars as to this property are made without responsibility on the part of Chrystals or the vendors or lessors.





GROUND FLOOR



1ST FLOOR



Measurements are approximate. Not to scale. Illustrative purposes only.
Made with Menzqix ©2024

Since 1854



DOUGLAS
31 Victoria Street
Douglas IM1 2SE
T. 01624 623778
E. douglas@chrystals.co.im

PORT ERIN
23 Station Road
Port Erin IM9 6RA
T. 01624 833903
E. porterin@chrystals.co.im

COMMERCIAL
Douglas Office: 01624 625100, commercial@chrystals.co.im

RENTALS
Douglas Office: 01624 625300, douglasrentals@chrystals.co.im

Directors: Shane Magee M.R.I.C.S.; Neil Taggart BSc (Hons), M.R.I.C.S.; Joney Kerruish BSc (Hons), M.R.I.C.S.; Dafydd Lewis BSc (Hons), M.R.I.C.S., MA (Cantab), Dip Surv Prac.; Consultants: Keith Kerruish
Registered in the Isle of Man No. 34808, Chrystal Bros, Stott & Kerruish Ltd. Trading as Chrystals. Registered Office, 31 Victoria Street, Douglas, Isle of Man IM1 2SE.