

Retail  
Development  
Industrial  
Investment  
Office



31 Victoria Street, Douglas  
Isle of Man, IM2 1SE

Phone: 01624 625100

Email: [commercial@chrystals.co.im](mailto:commercial@chrystals.co.im)

## BUILDING PLOTS FOR SALE

Plots 1-3, Golf Links, Brookfield Avenue,  
Ramsey, Isle of Man, IM8 2AH  
Asking price: £300,000



- 3 plots available
- Close to Ramsey Town Centre
- Situated next to Ramsey Golf Club
- Planning approval for a 5 bedroom contemporary home on each plot
- Designed by Ramsey architects Penketh Miller

### Description

An excellent opportunity to acquire one of three building plots with full planning consent for unique contemporary homes of circa 4,000 sq ft. The plots are situated 100m from the prestige Ramsey Golf Club.

The five bedroom homes have been designed by Ramsey architects Penketh Miller, with the modern open plan and entertaining aspect. The new dwelling has been carefully designed to respect its surroundings, whilst offering a new contemporary home discretely nestled in the garden grounds.

The homes have been designed to have areas of living and sleeping accommodation which are connected by a circulation link corridor.

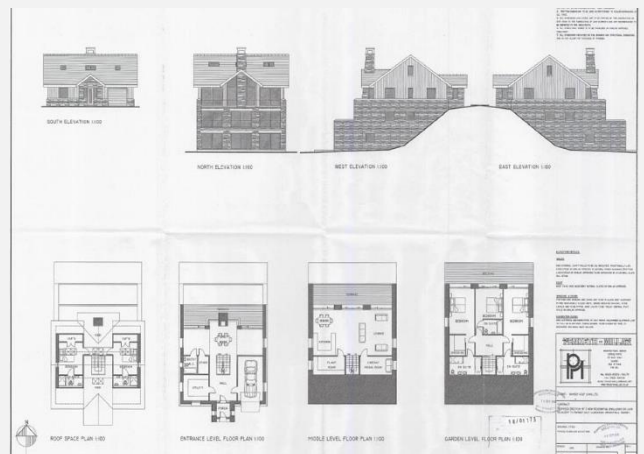
This link opens out onto the rear courtyard forming an extension to the living space. A series of external courtyard and balcony spaces, each directly related to an internal area offer different outdoor environments from private gardens to social entertaining spaces.

The plots lie on the western fringes of the popular town of Ramsey and is one of the most sought-after addresses in the North of the island. The area is mostly made up of large stone-built Victorian houses, modern developments and farm properties, offering country-style living, whilst being only a short walk from the centre of Ramsey. Ramsey offers local and specialist shopping available together with a number of excellent restaurants for all tastes. Planning application reference number: 16/01173/B. Permission expires in February 2026.



## Location

Travelling from Douglas over the Mountain Road, arriving in Ramsey continue down May Hill and after approximately one mile there is a turning on the left which leads onto Brookfield Avenue, continue along Brookfield Avenue for 500m and there is a sign denoting the Ramsey Golf Club. Turn right into the car park and the plots can be seen on your right hand side.



## Legal Costs

Each party is to be responsible for their own legal costs incurred in any transaction.

## Viewing

Viewing by appointment through the agents, **Chrystals Commercial**.

Notice is hereby given that these particulars, although believed to be correct do not form part of an offer or a contract. Neither the Vendor nor Chrystals, nor any person in their employment, makes or has the authority to make any representation or warranty in relation to the property. The Agents whilst endeavouring to ensure complete accuracy, cannot accept liability for any error or errors in the particulars stated, and a prospective purchaser should rely upon his or her own enquiries and inspection. All Statements contained in these particulars as to this property are made without responsibility on the part of Chrystals or the vendors or lessors. The company do not hold themselves responsible for any expense which may be incurred in visiting the same should it prove unsuitable or to have been let, sold or withdrawn. Unless otherwise stated all prices and rates are quoted exclusive of Value Added Tax (VAT). Any intending purchaser or lessee must satisfy themselves as to the incidents of VAT concerning any transaction.