



www.chrystals.co.im

Ballacain Cottage, Mount Rule, Braddan, IM4 4HW
Asking Price £899,950

Ballacain Cottage, Mount Rule, Braddan, IM4 4HW

Asking Price £899,950

Ballacain Cottage is a quintessential country property that has been significantly and tastefully extended only 10 minutes drive from all of the amenities of Douglas. It is presented in immaculate order with spacious accommodation extending to 4 double bedrooms (1 en-suite), 2 reception rooms, breakfast kitchen, large utility/boot room and cloakroom. The master suite boasts a hidden dressing room and wonderful balcony overlooking the garden and grounds. In addition to the main house there is a large Detached Double Garage with a self-contained Home Office above accessed via steps to the rear, with a super garden store and excellent greenhouse. The property sits in expansive grounds with a versatile paddock of circa 1 acre paddock to the west. There are electric gates and pillars from the main road, giving a great deal of privacy, and ample parking for several cars on a block paved drive.





LOCATION

Travelling out of Douglas on the Peel Road, continue towards the Oak Tree roundabout and take the right hand turning up Braddan Road, past the school until the next roundabout. Continue straight ahead and keep travelling until you reach the Strang roundabout. Continue straight ahead on the Mount Rule Road and the property can be found on the right hand side after approx. 1 mile.

PORCH

6' 0" x 5' 0" (1.83m x 1.52m)

Outer UPVC door. Tiled floor. Inner timber door.

SITTING ROOM 18' 0" x 14' 2" (5.48m x 4.31m)

Attractive feature fireplace with inset multi fuel stove. Feature beamed ceiling.

DINING ROOM 14' 3" x 10' 0" (4.34m x 3.05m)

Feature fireplace. Beamed ceiling. Equally suited to a second sitting room, snug or playroom.

INNER HALL

10' 8" x 3' 11" (3.25m x 1.19m)

Access to Kitchen, Utility, Cloakroom and Sitting Room.

CLOAKROOM 6' 4" x 2' 10" (1.93m x 0.86m)

WC and pedestal wash hand basin over vanity unit. Tiled splashbacks.

UTILITY/BOOT ROOM/PANTRY

18' 4" x 18' 11" (5.58m x 5.76m)

Superb, versatile utility/bootroom/pantry with a breath of fitted cupboards housing concealed washing machine and tumble dryer. Sink unit. Door to outside.

KITCHEN 19' 6" x 11' 8" (5.94m x 3.55m)

Contemporary breakfast kitchen in gloss cream with dark Corian worksurfaces over. Large feature central island. 2 AEG Double AEG ovens, with matching induction hob. Double bowl sink unit with drainer. French doors to outside. Downlights. Wall mounted TV point. Sonos speakers in ceiling.

LANDING

BEDROOM 1 15' 0" x 12' 0" (4.57m x 3.65m)

Superb bedroom suite with a breath of fitted furniture and wonderful concealed dressing area. French doors to balcony overlooking the gardens and paddock. En-suite bathroom with WC, panelled bath, washbasin over vanity unit, WC and shower enclosure.

BEDROOM 2 14' 0" x 12' 0" (4.26m x 3.65m)

BEDROOM 3 14' 0" x 11' 0" (4.26m x 3.35m)

Spacious double room.

BEDROOM 4 10' 0" x 8' 0" (3.05m x 2.44m)

Double room.

FAMILY BATHROOM

8' 0" x 12' 0" (2.44m x 3.65m)

White suite with WC, pedestal washbasin, panelled bath and shower enclosure.

GARAGE/OFFICE

19' 6" x 19' 8" (5.94m x 5.99m)

Substantial 2 storey detached double garage with space for 2 cars and having flexible office area over with further potential. Hormann electrical sectional door.

Office over (accessed via external aluminium steps)

Large attached lean-to forming garden store - 13'11 x 9'5.

OUTSIDE

Greenhouse: 10' x 8'.

Wonderful grass paddock of circa 1 acre bounded by mature hedging - versatile and suitable for a variety of family activities! - (or smallholding/equestrian uses of course!)

Patio, beds and borders with lawned area to front and rear of house and adjoining the parking area.

SERVICES

Mains water and electricity. Private drainage. Gas central heating.

VIEWING

Viewing is strictly by appointment through CHRYSTALS. Please inform us if you are unable to keep appointments.

POSSESSION

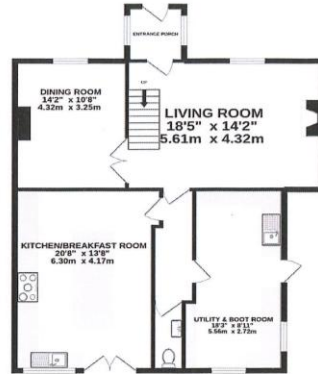
Vacant possession on completion of purchase. The company do not hold themselves responsible for any expenses which may be incurred in visiting the same should it prove unsuitable or have been let, sold or withdrawn. **DISCLAIMER** - Notice is hereby given that these particulars, although believed to be correct do not form part of an offer or a contract. Neither the Vendor nor Chrystals, nor any person in their employment, makes or has the authority to make any representation or warranty in relation to the property. The Agents whilst endeavouring to ensure complete accuracy, cannot accept liability for any error or errors in the particulars stated, and a prospective purchaser should rely upon his or her own enquiries and inspection. All Statements contained in these particulars as to this property are made without responsibility on the part of Chrystals or the vendors or lessors.



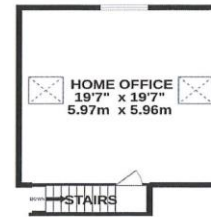
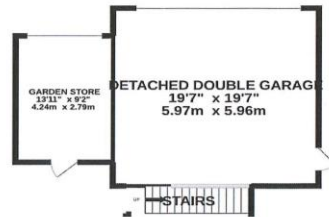
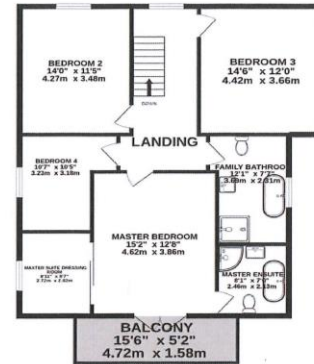




GROUND FLOOR
1493 sq.ft. (138.7 sq.m.) approx.



1ST FLOOR
1341 sq.ft. (124.6 sq.m.) approx.



TOTAL FLOOR AREA: 2835 sq.ft. (263.3 sq.m.) approx.

While every attempt has been made to ensure the accuracy of the floorplan contained here, measurements of doors, windows, rooms and any other items are approximate and no responsibility is taken for any errors, omission or mis-statement. This plan is for illustrative purposes only and should be used as such by any prospective purchaser. The services, systems and appliances shown have not been tested and no guarantee is to their operation or efficiency can be given.
Made with Neopica ©2022

Since 1854



DOUGLAS
31 Victoria Street
Douglas IM1 2SE
T. 01624 623778
E. douglas@chrystals.co.im

PORT ERIN
23 Station Road
Port Erin IM9 6RA
T. 01624 833903
E. porterin@chrystals.co.im

COMMERCIAL
Douglas Office: 01624 625100, commercial@chrystals.co.im

RENTALS
Douglas Office: 01624 625300, douglasrentals@chrystals.co.im

Directors: Shane Magee M.R.I.C.S.; Neil Taggart BSc (Hons), M.R.I.C.S.; Joney Kerruish BSc (Hons), M.R.I.C.S.; Dafydd Lewis BSc (Hons), M.R.I.C.S., MA (Camb), Dip Surv Prac.; Consultants: Keith Kerruish Registered in the Isle of Man No. 34808, Chrystal Bros, Stott & Kerruish Ltd. Trading as Chrystals. Registered Office, 31 Victoria Street, Douglas, Isle of Man IM1 2SE.