



GRIFFIN
THE PROPERTY PEOPLE



Shirley Gardens

, Basildon, SS13 1BA

Asking price £250,000

** Calling All First Time Buyers & Investors **

Griffin are delighted to offer to the market this beautifully presented Two Bedroom Ground Floor Flat situated on a corner plot in the popular Burnt Mills area.

Offering accommodation to include an entrance hall, living room, separate kitchen, two bedrooms and bathroom. Externally the property benefits from a great sized rear garden with patio and covered bar area. The property further benefits from Two Allocated Parking Spaces.

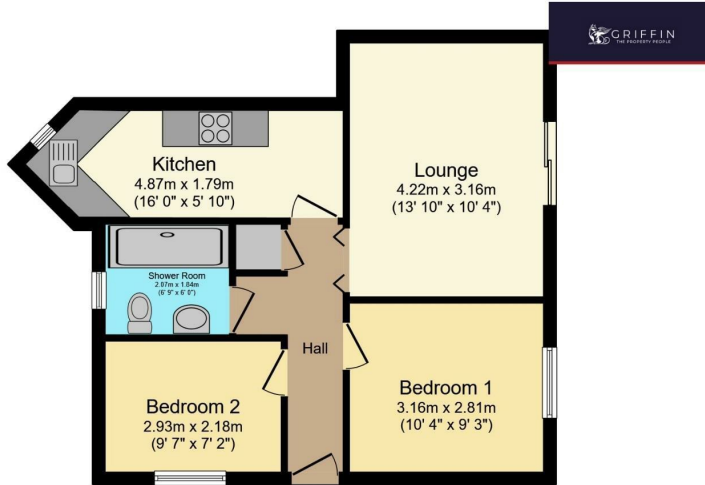
Viewings are advised in order to appreciate the condition size and especially the garden!

Viewing

Please contact our Griffin Residential Stanford-Le-Hope Office on 01375 600615 if you wish to arrange a viewing appointment for this property or require further information.



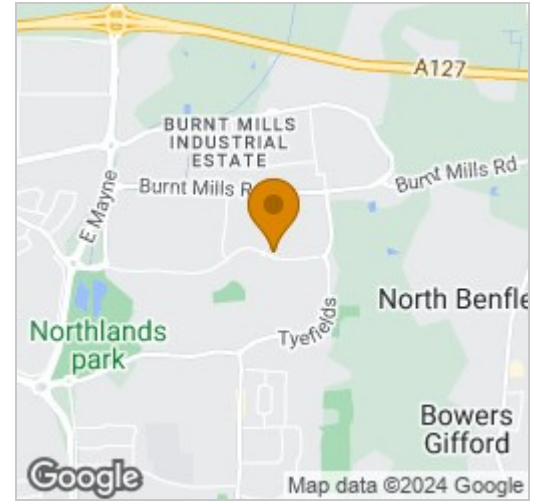
Floor Plan



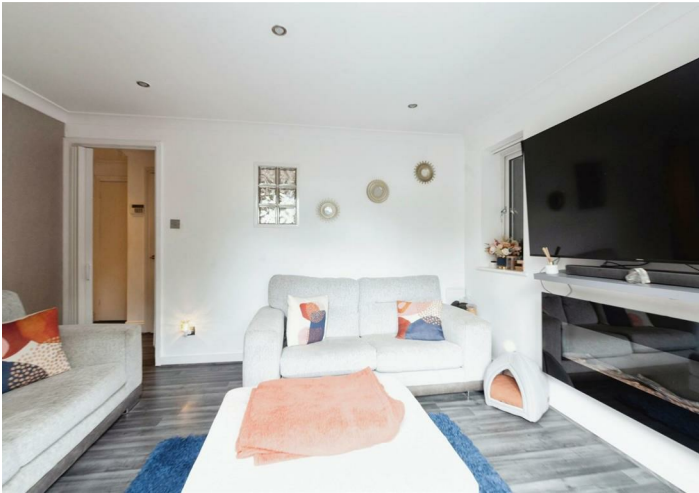
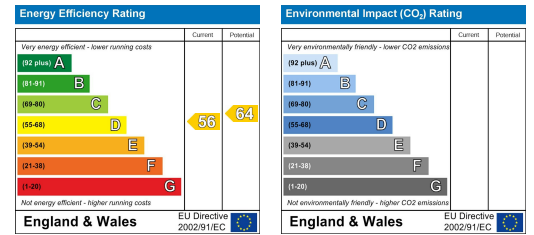
Total floor area 49.0 sq.m. (527 sq.ft.) approx

This floor plan is for illustrative purposes only. It is not drawn to scale. Any measurements, floor areas (including any total floor area), openings and orientation are approximate. No details are guaranteed, they cannot be relied upon for any purpose and they do not form part of any agreement. No liability is taken for any error, omission or misstatement. A party must rely upon its own inspection(s). Powered by www.focalagent.com

Area Map



Energy Efficiency Graph



These particulars, whilst believed to be accurate are set out as a general outline only for guidance and do not constitute any part of an offer or contract. Intending purchasers should not rely on them as statements of representation of fact, but must satisfy themselves by inspection or otherwise as to their accuracy. No person in this firm's employment has the authority to make or give any representation or warranty in respect of the property.