



GRIFFIN  
THE PROPERTY PEOPLE



## Broomfields , Basildon, SS13 3LE

Asking price £285,000

Guide Price - £275,00 - £285,000.

Griffin Are pleased to offer For Sale this Well Presented Two bedroom House in Pitsea.

The property offers a nice open plan Lounge/Diner which allows an open spacious feeling, from this room there is access to the kitchen, a door into the kitchen and stairs to first floor. From the first floor there are doors into the Two bedroom, the family Bathroom and separate W/C.

The property benefits from having Double Glazing, Gas central heating and a Rear garden.

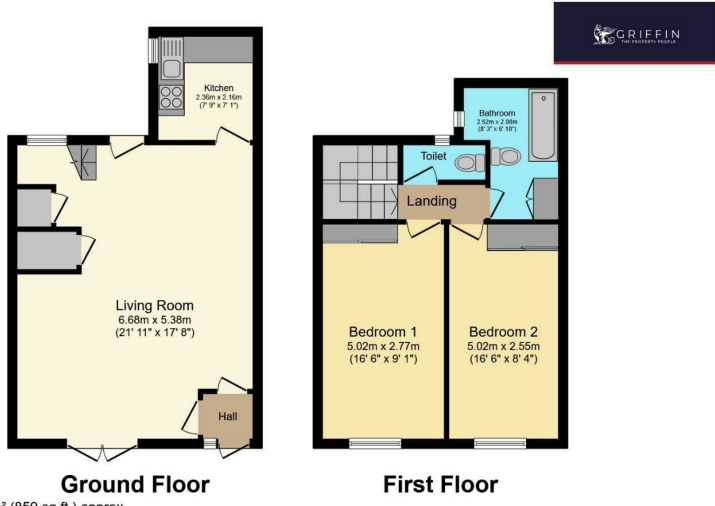
### Viewing

Please contact our Griffin Residential Stanford-Le-Hope Office on 01375 600615 if you wish to arrange a viewing appointment for this property or require further information.





# Floor Plan



**Ground Floor**

**First Floor**

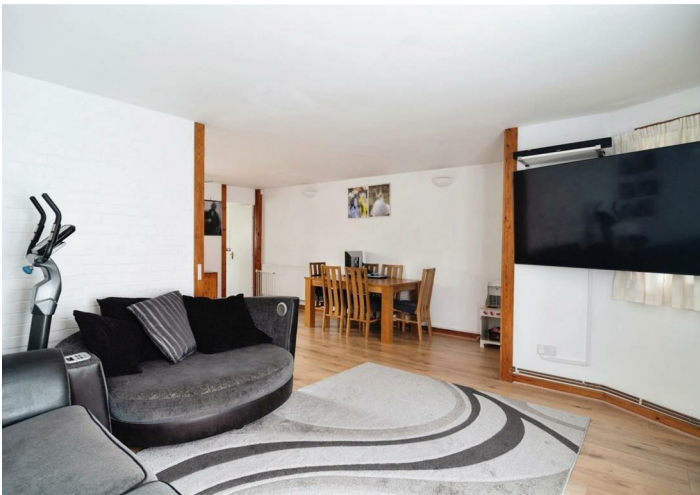
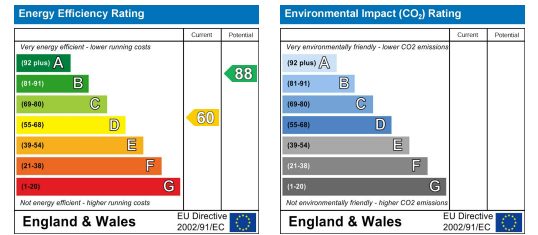
Total floor area 79.8 m<sup>2</sup> (859 sq.ft.) approx

This floor plan is for illustrative purposes only. It is not drawn to scale. Any measurements, floor areas (including any total floor area), openings and orientation are approximate. No details are guaranteed, they cannot be relied upon for any purpose and they do not form part of any agreement. No liability is taken for any error, omission or misstatement. A party must rely upon its own inspection(s). Powered by www.focalagent.com

# Area Map



# Energy Efficiency Graph



These particulars, whilst believed to be accurate are set out as a general outline only for guidance and do not constitute any part of an offer or contract. Intending purchasers should not rely on them as statements of representation of fact, but must satisfy themselves by inspection or otherwise as to their accuracy. No person in this firms employment has the authority to make or give any representation or warranty in respect of the property.