



GRIFFIN

THE PROPERTY PEOPLE



Wharf Close

, Stanford-Le-Hope, SS17 0EJ

Asking price £250,000

****OWN GARDEN** - ** GARAGE** - ** NO ONWARD CHAIN** - **CLOSE TO TRAIN STATION****

This property will suit a First time buyer who is looking to have their own outside space or someone that is looking to downsize but without giving up their Garden and Garage.

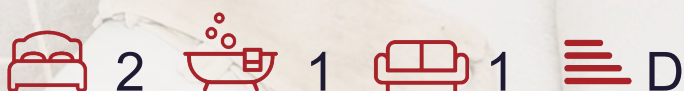
Griffin are delighted to offer For Sale this Two Bedroom Groundfloor Maisonette which is situated within walking distance to Stanford-le-Hope mainline railway station which services London Fenchurch Street through to Southend-on-Sea.

The property benefits from a Modern Fitted Kitchen and Bathroom, Double Glazing, Gas Central Heating, nice size Lounge/Diner and is offered with No Onward Chain.

With the added benefit of being situated within easy reach of many local amenities an early Viewing is strongly recommended.

Viewing

Please contact our Griffin Residential Stanford-Le-Hope Office on 01375 600615 if you wish to arrange a viewing appointment for this property or require further information.

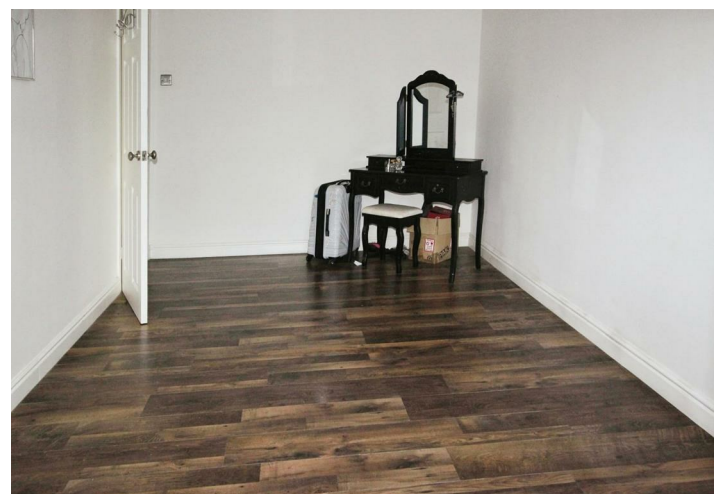
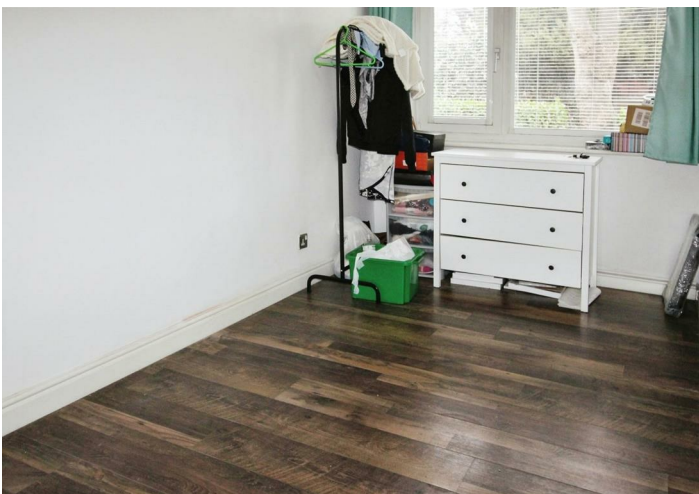
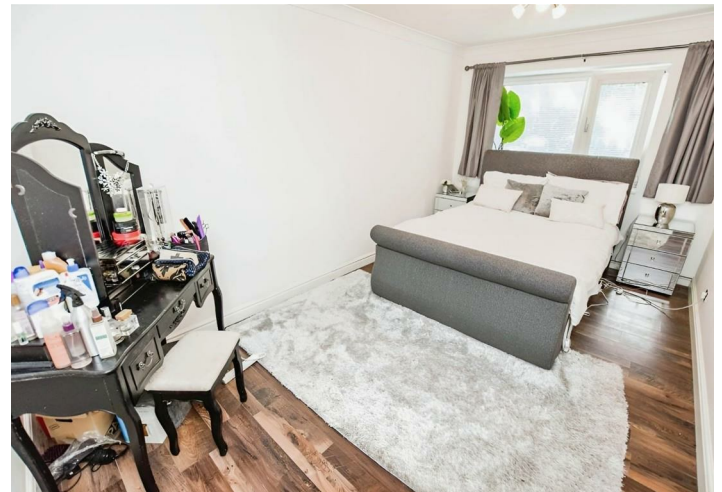
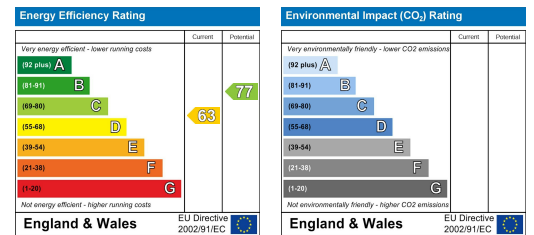


Floor Plan

Area Map



Energy Efficiency Graph



These particulars, whilst believed to be accurate are set out as a general outline only for guidance and do not constitute any part of an offer or contract. Intending purchasers should not rely on them as statements of representation of fact, but must satisfy themselves by inspection or otherwise as to their accuracy. No person in this firm's employment has the authority to make or give any representation or warranty in respect of the property.