



**GRIFFIN**  
THE PROPERTY PEOPLE



## Kingsley Meadows , Wickford, SS12 9FL

Asking price £450,000

Griffin are offering to the market this impressive modern **FOUR BEDROOM** detached **TOWNHOUSE** located in a popular part of Wickford.

The property is located within easy reach of schools, transport routes and has the added advantage of being offered with **NO ONWARD CHAIN**.

The accommodation is spread over **THREE FLOORS** and offers **TWO RECEPTION ROOMS** and **FOUR DOUBLE SIZED BEDROOMS**. Energy Rating D66.

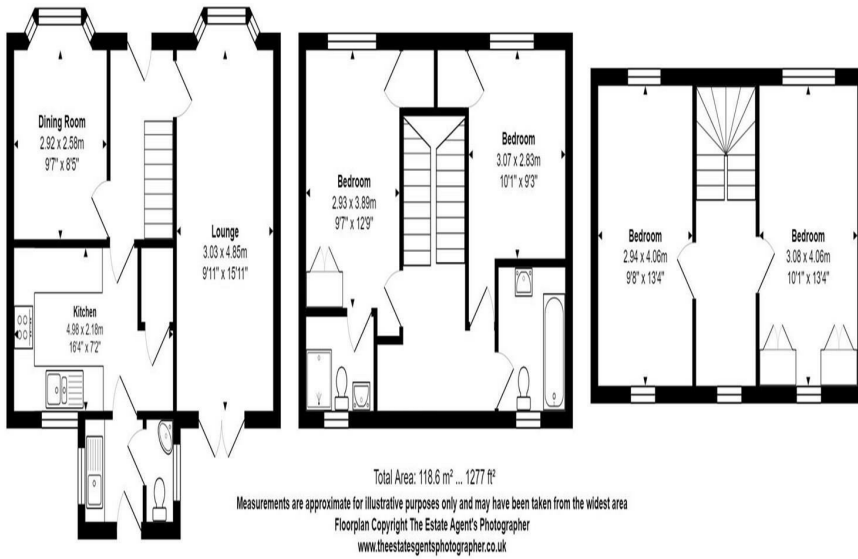
### Viewing

Please contact our Griffin Residential Stanford-Le-Hope Office on 01375 600615 if you wish to arrange a viewing appointment for this property or require further information.





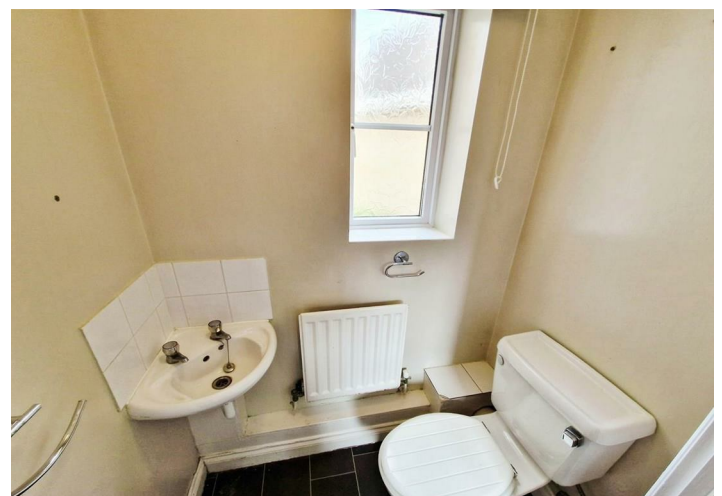
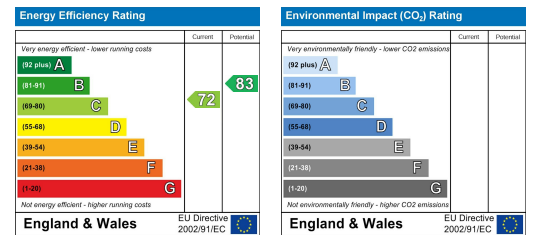
## Floor Plan



## Area Map



## Energy Efficiency Graph



These particulars, whilst believed to be accurate are set out as a general outline only for guidance and do not constitute any part of an offer or contract. Intending purchasers should not rely on them as statements of representation of fact, but must satisfy themselves by inspection or otherwise as to their accuracy. No person in this firm's employment has the authority to make or give any representation or warranty in respect of the property.