



# GRIFFIN

THE PROPERTY PEOPLE



## Cornwell Crescent , Stanford-Le-Hope, SS17 7DL

### £1,325

RENT: £1,325.00 - FIVE WEEK DEPOSIT: £1,528.00.

Griffin are pleased to market this beautifully modern three bedroom property in Stanford-Le-Hope.

This property benefits from high curb appeal starting with the large front drive for two cars, double glazed windows and side access to the rear garden.

Downstairs the property consists of a large living/dining area which also has double glazed, double door access, to the rear garden. The kitchen is situated at the back of the property and is modern with white tiles, grey flooring and lots of counter and cupboard space.

Further to all the benefits that the property offers downstairs, the upstairs is also spacious with three bedrooms, two double and one dressing room, with a main modern family bathroom.

Available 1st July, call now to arrange your viewing!

EPC RATING: D  
COUNCIL TAX BAND: C  
COUNCIL TAX ESTIMATE: £1,542.32  
GAS AND ELECTRIC

### Viewing

Please contact our Griffin Residential Stanford-Le-Hope Office on 01375 600615 if you wish to arrange a viewing appointment for this property or require further information.

- STANFORD-LE-HOPE
- THREE BEDROOM
- DIVEWAY
- MODERN PROPERTY
- AVAILABLE 1ST JULY
- REAR GARDEN
- LOUNGE/DINER



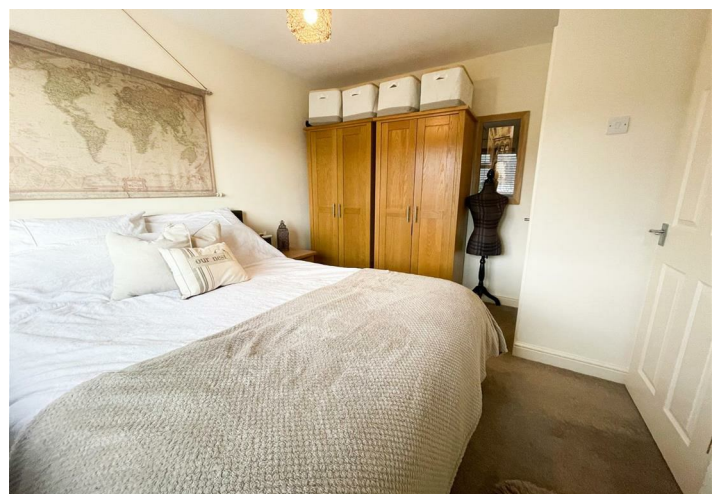
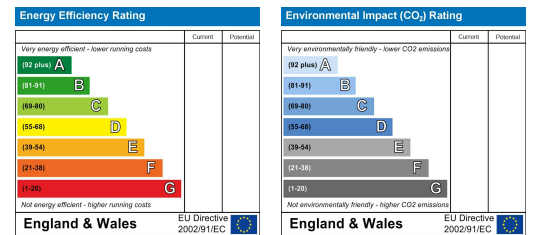


## Floor Plan

## Area Map



## Energy Efficiency Graph



These particulars, whilst believed to be accurate are set out as a general outline only for guidance and do not constitute any part of an offer or contract. Intending purchasers should not rely on them as statements of representation of fact, but must satisfy themselves by inspection or otherwise as to their accuracy. No person in this firm's employment has the authority to make or give any representation or warranty in respect of the property.