

FLETCHER
FOUR
BEDROOM
HOME

BLOOR HOMES



A four bedroom detached home comprising a spacious lounge with bay window and fantastic open plan kitchen / dining / family area with a separate utility room and French doors leading to the garden. Upstairs are four bedrooms with the master benefitting from fitted wardrobes and an en suite shower room.

FLETCHER

A BEAUTIFUL FOUR BEDROOM
DETACHED FAMILY HOME

**FLETCHER
FOUR
BEDROOM
HOME**

FIRST FLOOR:

BEDROOM 1
3.55m x 2.62m
11'8" x 8'7"

EN SUITE

BEDROOM 2
3.29m x 3.31m
10'9" x 10'10"

BEDROOM 3
3.38m x 2.83m
11'1" x 9'3"

**BEDROOM 4 /
HOME OFFICE**
2.57m x 2.79m
8'5" x 9'2"

BATHROOM



**FIRST
FLOOR**

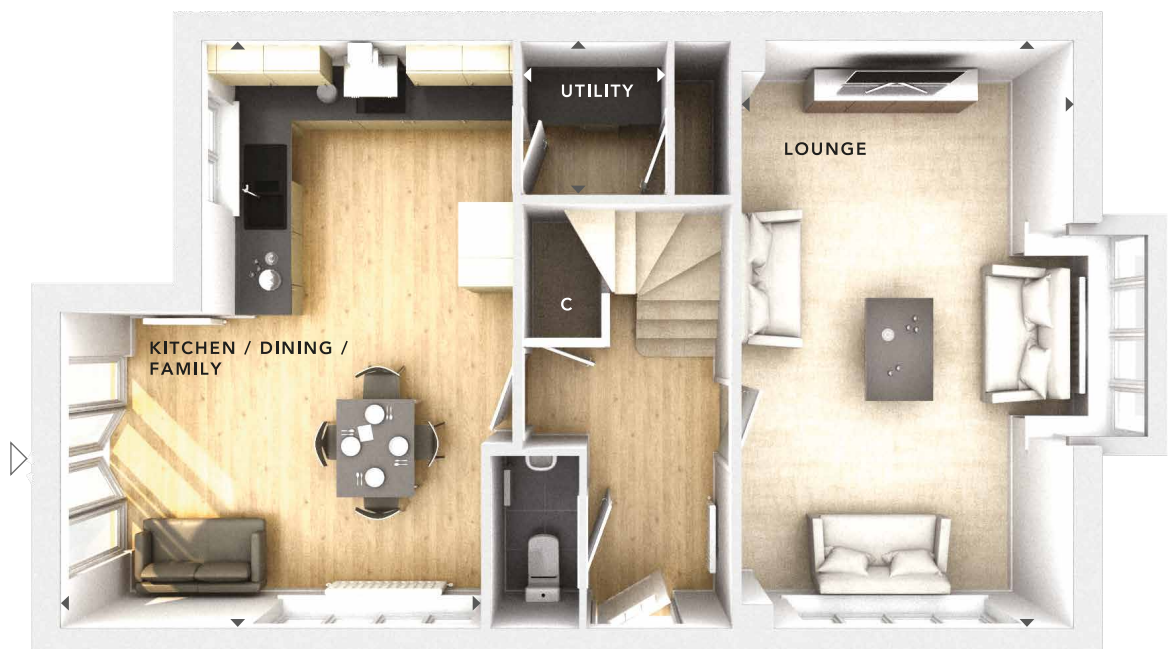
GROUND FLOOR:

LOUNGE
3.47m x 6.18m
11'5" x 20'3"

**KITCHEN / DINING /
FAMILY**
4.41m x 6.18m
14'6" x 20'3"

UTILITY
1.35m x 1.60m
4'5" x 5'3"

CLOAKS



**GROUND
FLOOR**

W	- Fitted Wardrobes
C	- Storage
△	- External Access
◄►	- Measurement Points
© Bloor Homes • 493VH0013R 4.9	



These particulars are intended as a preliminary guide for prospective purchasers and should not be relied upon. The elevational treatment for individual house types shows a typical arrangement. Details of materials and design treatments may vary. Any artist impressions shown are not intended to represent any particular plot. Purchasers are advised to inspect the layout plan to establish the arrangement of the house and surrounding property. Internal layouts show a general arrangement which may vary from plot to plot. Room sizes given are approx. overall finished room sizes and subject to normal building tolerances (ie ± 75mm). In all instances purchasers are advised to inspect plot specific information available from our sales team. Nothing in these particulars or verbal assurance shall form or constitute part of any contract, and are given without any responsibility on behalf of Bloor Homes.