

WEBSTER
FOUR
BEDROOM
HOME

BLOOR HOMES



A four bedroom detached home comprising a spacious lounge with bay window and fantastic open plan kitchen / dining / family area, featuring French doors leading to the rear garden. Downstairs also comprises a utility cupboard and cloakroom. Upstairs, three of the four bedrooms are spacious doubles, with the master bedroom benefitting from fitted wardrobes and an en suite shower room.

WEBSTER

A SPACIOUS DETACHED FOUR
BEDROOM FAMILY HOME

**WEBSTER
FOUR
BEDROOM
HOME**

FIRST FLOOR:

BEDROOM 1
2.88m x 3.68m
9'6" x 12'1"

EN SUITE

BEDROOM 2
3.95m x 2.47m
12'11" x 8'1"

BEDROOM 3
2.61m x 3.15m
8'7" x 10'4"

**BEDROOM 4 /
HOME OFFICE**
3.18m x 2.28m
10'5" x 7'6"

BATHROOM

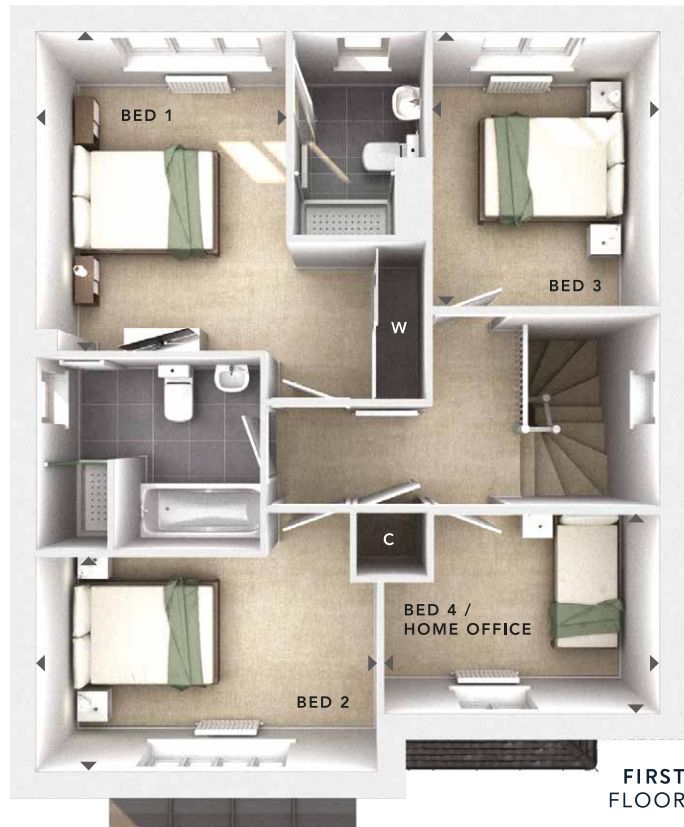
GROUND FLOOR:

LOUNGE
4.11m x 4.15m
13'6" x 13'7"

**KITCHEN / DINING /
FAMILY**
7.20m x 4.25m
23'8" x 13'11"

UTILITY CUPBOARD

CLOAKS



**FIRST
FLOOR**



**GROUND
FLOOR**

W	- Fitted Wardrobes
C	- Storage
U	- Utility Cupboard
△	- External Access
◀▶	- Measurement Points
© Bloor Homes • 476VH0012B 4.8	



These particulars are intended as a preliminary guide for prospective purchasers and should not be relied upon. The elevational treatment for individual house types shows a typical arrangement. Details of materials and design treatments may vary. Any artist impressions shown are not intended to represent any particular plot. Purchasers are advised to inspect the layout plan to establish the arrangement of the house and surrounding property. Internal layouts show a general arrangement which may vary from plot to plot. Room sizes given are approx. overall finished room sizes and subject to normal building tolerances (ie ± 75mm). In all instances purchasers are advised to inspect plot specific information available from our sales team. Nothing in these particulars or verbal assurance shall form or constitute part of any contract, and are given without any responsibility on behalf of Bloor Homes.