



Victoria Row, St Just TR19

£200,000

Victoria Row, St Just TR19

Delightfully cute, this two bedroom cottage sits in a fabulous terrace of pretty cottages close to the town centre and very close to the town's free car park and bus station. There is a pretty front garden and a rear courtyard garden - the property is sold in excellent order with many appliances included!





DESCRIPTION

Much loved and much improved by the current owners, this pleasantly-positioned cute cottage is presented in very good order, with a wealth of character features - making it an ideal starter home.

At the front is an easy-to-keep front garden that enjoys the morning sun, as well as a garden at the rear which the owner says is a real suntrap through the afternoon. Step across the front step into a good-size living/dining room, that has a large fireplace, exposed beams, and a smart, new tiled floor. To the rear is a small, but perfectly formed kitchen with a skylight window and door giving access to the rear garden.

Rising up from the living room, the stairs bring you to the landing off which there is a modern bathroom, a single bedroom, and a very pleasant master/double bedroom both with recently fitted carpets. The master bedroom looks out to the front, while the second bedroom overlooks the rear garden. The bathroom is recently refurbished, and in line with the standard throughout, this represents a 'move-in ready' home for those wanting to be well placed in a great community.

The property sits one from the end of a single-sided terrace near the primary school in St Just, meaning the free car park, doctor's surgery, and the town centre are a short stroll away.

LOCATION

St Just is a very popular town with a thriving community and a varied mix of busy shops and businesses. Properties here are



KITCHEN

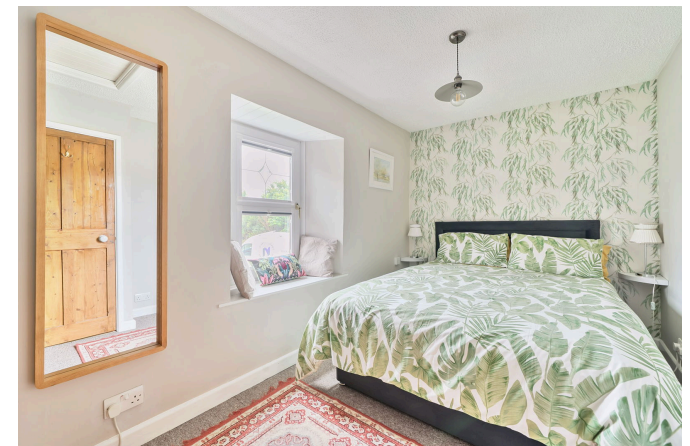
Step down from the living room to the kitchen with its range of base units topped with laminate worktops. There is a freestanding electric cooker with a recirculating extractor hood over, as well as a washing machine and stainless steel sink and drainer. There is a small velux rooflight over the sink area, where a uPVC double glazed door leads to the rear garden. Appliances are included.

LANDING

Cerpet. Electric radiator.

BEDROOM

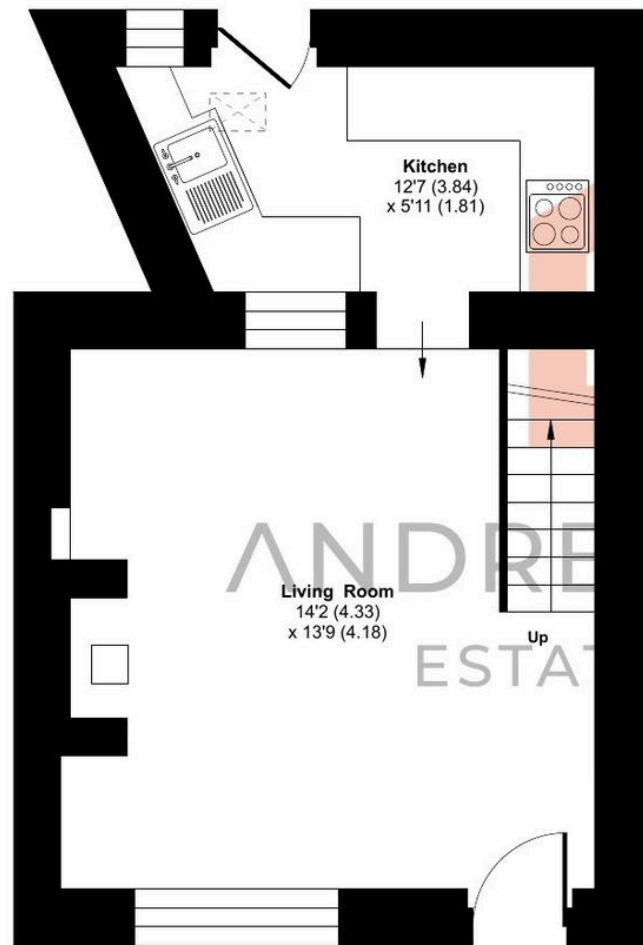
Original timber door leads to a double bedroom with carpet, and a uPVC double glazed window to the front. Drawers are included.



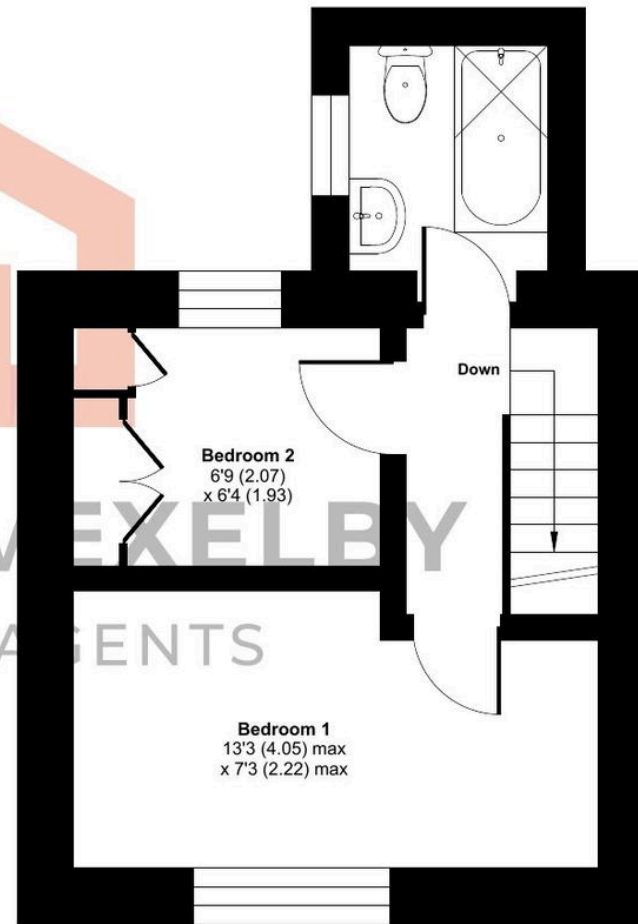
Victoria Row, St. Just, Penzance, TR19

Approximate Area = 511 sq ft / 47.4 sq m

For identification only - Not to scale



GROUND FLOOR



FIRST FLOOR



Floor plan produced in accordance with RICS Property Measurement 2nd Edition, Incorporating International Property Measurement Standards (IPMS2 Residential). © n1checom 2025. Produced for Andrew Exelby Estate Agents. REF: 1309416



ANDREW
EXELBY
ESTATE AGENTS