



North Row, St Just TR19

£475,000



ANDREW
EXELBY
ESTATE AGENTS

North Row, St Just TR19

A stunning refurbished and much-improved home with a wealth of history and character to it. This historic building now offers off street parking, EV charging as well as a very private rear garden with stunning valley views.





DESCRIPTION

Historically a Methodist meeting room, this enchanting and instantly recognisable property features in the diaries of John Wesley dated as early as 1743. Under its current owners' custody, the property has undergone a comprehensive, yet sympathetic, programme of renovation and improvements to ensure no character or original features are lost. A full list of the improvements made by the current owners can be provided.

Accessed via external granite steps, the property is packed with unrivalled charm from the outset - an entrance hallway leads you in to a beamed, lofty living room with solid wooden floors and a central woodburning stove at one end. The room is triple aspect with enviable views down to Nancherrow Valley at the rear, and the room extending right to front of the house with space for a dining table.

Off the large living space is a dual aspect kitchen/diner that will definitely appeal to those wanting a farmhouse-style kitchen - with bespoke timber cabinetry, and solid wooden worktops. Also on this upper floor is a family bathroom, with a shower room downstairs on the ground floor.



Downstairs, you have three double bedrooms, the largest of which is a very good size with a fireplace housing a multi-fuel stove and the others boasting decorative granite inglenook fireplaces; demonstrating how spacious they each are. Leading to the integral garage, which is currently utilised as a workshop, you pass through a great, ground floor utility/laundry room that offers space for all your laundry appliances as well as worktops and



KITCHEN/DINER

5.79m x 3.42m (18'11" x 11'2")

Dual aspect kitchen / diner with hardwood timber windows (double glazed at the front and secondary glazed at rear). Range of bespoke timber base units and open shelves with solid wood worktops and a recessed Belfast sink with tiled splashbacks. Large built-in timber storage/larder cupboard. Electric range cooker (included).

BATHROOM

Suite comprises bath, wash basin and WC with tiled surrounds. Hardwood timber double glazed window. Solid wooden floor. Radiator.

BEDROOM

5.82m x 3.69m (19'1" x 12'1")

Large double bedroom with multifuel stove on a slate hearth in a fireplace with exposed granite surround. Hardwood timber window (secondary glazed). Carpet. Radiator.



The Meeting Place, North Row, St. Just, Penzance, TR19



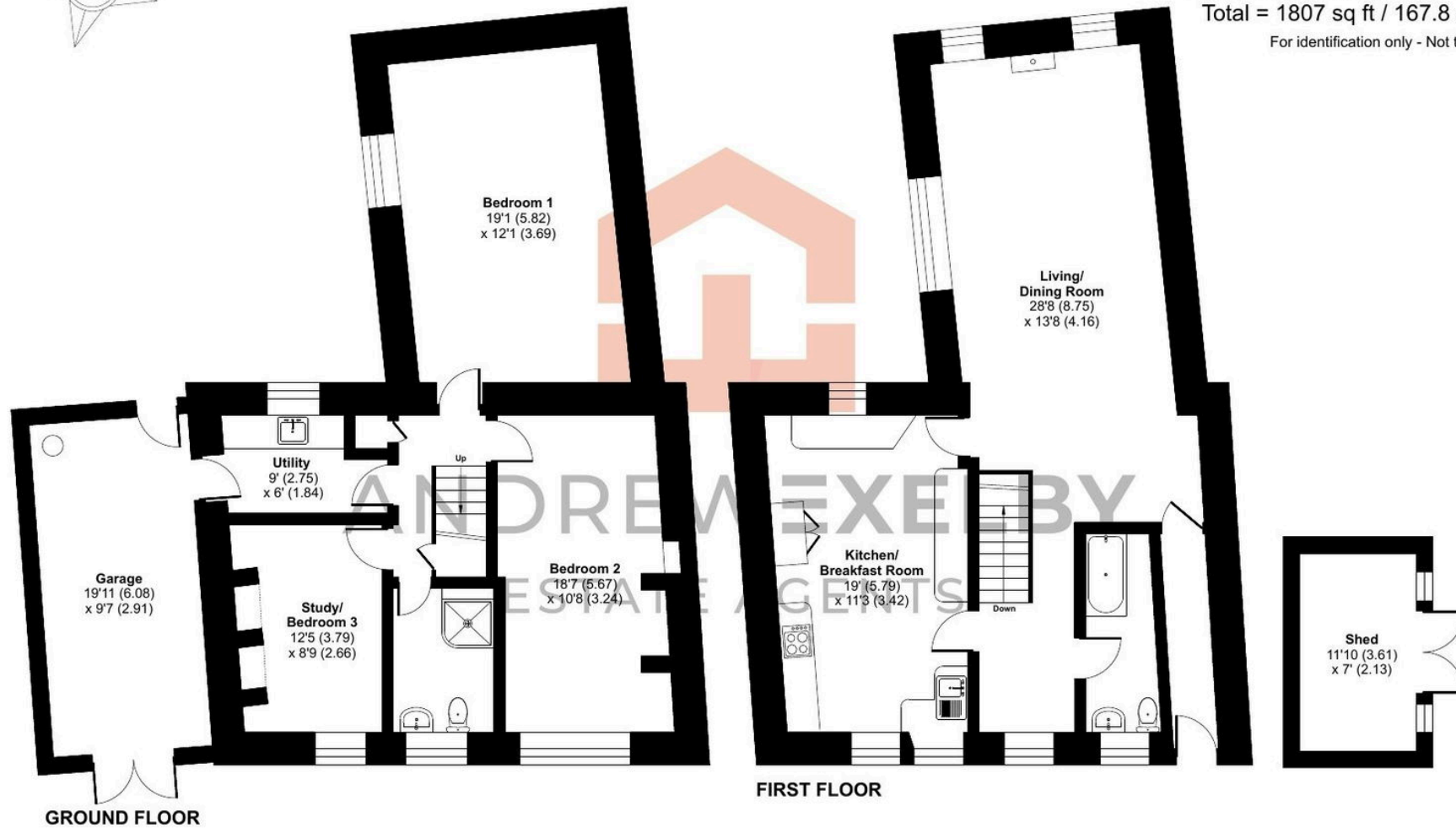
Approximate Area = 1534 sq ft / 142.5 sq m

Garage = 190 sq ft / 17.6 sq m

Outbuilding = 83 sq ft / 7.7 sq m

Total = 1807 sq ft / 167.8 sq m

For identification only - Not to scale



Floor plan produced in accordance with RICS Property Measurement 2nd Edition, Incorporating International Property Measurement Standards (IPMS2 Residential). © n1checom 2025. Produced for Andrew Exelby Estate Agents. REF: 1299225



**ANDREW
EXELBY**
ESTATE AGENTS