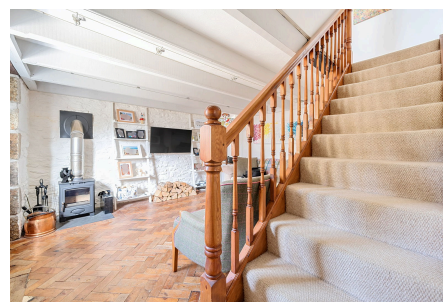


Trelew Gardens, St Just, TR19

£250,000

 2  1  1



Hidden away in a courtyard very close to the town centre of St Just, is this delightful converted barn with an off street parking space and a fully enclosed, suntrap garden. The Old Barn is attractively presented and finished, with two stable doors, timber double glazed windows, slate window cills and two heritage style velux rooflights.

Key Features

- 'CHOCOLATE BOX' TWO BED BARN CONVERSION
- SOLID WOOD BLOCK FLOORING IN LIVING ROOM
- OFF STREET PARKING SPACE
- CLOSE TO TOWN CENTRE
- COUNCIL TAX BAND - A
- STABLE DOORS, EXPOSED BEAMS, SLATE CILLS
- MULTIFUEL STOVE & CENTRAL HEATING
- ENCLOSED GARDENS TO FRONT & SIDE
- EPC - E
-

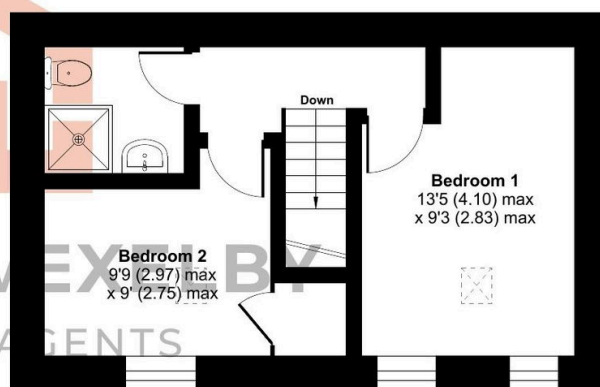
Trelew Gardens, Penzance, TR19

Approximate Area = 618 sq ft / 57.4 sq m

For identification only - Not to scale



GROUND FLOOR



FIRST FLOOR

 Floor plan produced in accordance with RICS Property Measurement 2nd Edition, Incorporating International Property Measurement Standards (IPMS2 Residential). © nixhecom 2025. Produced for Andrew Exelby Estate Agents. REF: 1290663