



ANDREW
EXELBY
ESTATE AGENTS

Bosorne Road, St Just TR19

£160,000

2 1

On the way to Cot Valley from St Just, sits this surprising cottage with outside space, storage shed with power and plumbing and off street parking space. With one bedroom, a large landing area that is currently used as a second sleeping space, and a shower room upstairs, and an entirely open plan space on the ground floor this property has lots of character features making it a thoroughly unique property.



Floor Area: sq. ft.

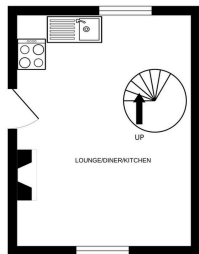
Tenure: Freehold

Service Charge: £ per annum

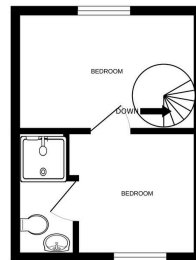
Ground Rent: £ per annum



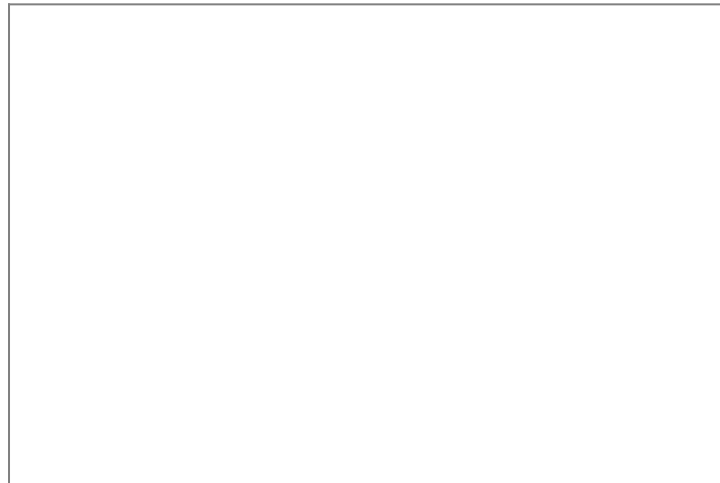
GROUND FLOOR



1ST FLOOR



Whilst every attempt has been made to ensure the accuracy of the figures contained here, measurements of doors, windows, floors and any other items are approximate and no responsibility is taken for any error, omission or mis-statement. This plan is for illustrative purposes only and should be used as such by any prospective purchaser. The services, systems and appliances shown have not been tested and no guarantee as to their operability or efficiency can be given.
Made with Metapix 03224



**ANDREW
EXELBY**
ESTATE AGENTS