



ANDREW  
EXELBY  
ESTATE AGENTS

## Nancherrow Terrace, St Just TR19

Guide Price £132,500

🛏 2 🚿 1 🚗 1



Super-practical ground floor flat with an area of patio garden, an off street parking space and two bedrooms - this flat would suit anyone wanting to be with a very short walk of St Just town centre. Fantastic first time buy or start home. Please note: holiday letting is not permitted in this development.

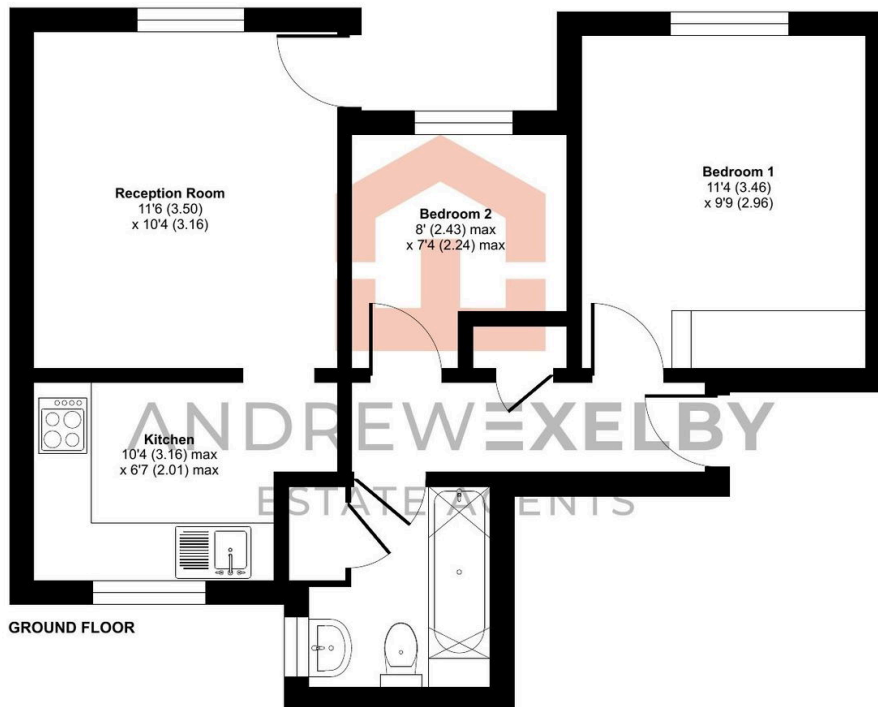



## Key Features

- TWO BED GROUND FLOOR FLAT
- PATIO / GARDEN AREA TO FRONT
- ALLOCATED CAR PARKING SPACE
- EPC - D
- REMAINDER OF 999 YEAR LEASE (1990)
- GREAT STARTER HOME / FIRST TIME BUY
- UPVC DOUBLE GLAZING THROUGHOUT
- COUNCIL TAX BAND - A

## Cape Trelew, Nancherrow Terrace, St. Just, Penzance, TR19

Approximate Area = 457 sq ft / 42.4 sq m  
For identification only - Not to scale



 Floor plan produced in accordance with RICS Property Measurement 2nd Edition, Incorporating International Property Measurement Standards (IPMS2 Residential). © nchecom 2025. Produced for Andrew Exelby Estate Agents. REF: 1265757