

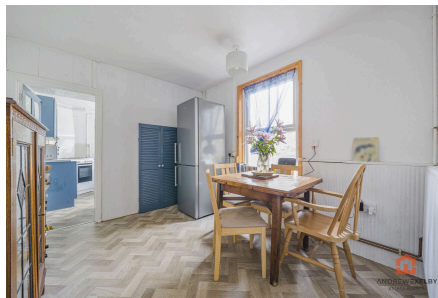


ANDREW  
EXELBY  
ESTATE AGENTS

## Tolver Road, Penzance TR18

Guide Price £330,000

🛏 3 🚿 2 🚗 3



Offered to the market with NO ONWARD CHAIN is this lovely three bedroom mid-terrace townhouse that is but a short distance away from Penzance town. The property benefits from uPVC double glazing along with a good size rear courtyard with outbuilding.

## Key Features

- OFFERED TO THE MARKET WITH NO ONWARD CHAIN
- UPVC DOUBLE GLAZING
- GOOD SIZE REAR COURTYARD WITH OUTBUILDING
- MUST BE VIEWED TO BE APPRECIATED
- THREE BEDROOM MID-TERRACE TOWN HOUSE
- GAS CENTRAL HEATING
- CLOSE PROXIMITY TO THE TOWN
- EPC RATING - E50 / COUNCIL TAX BAND - C



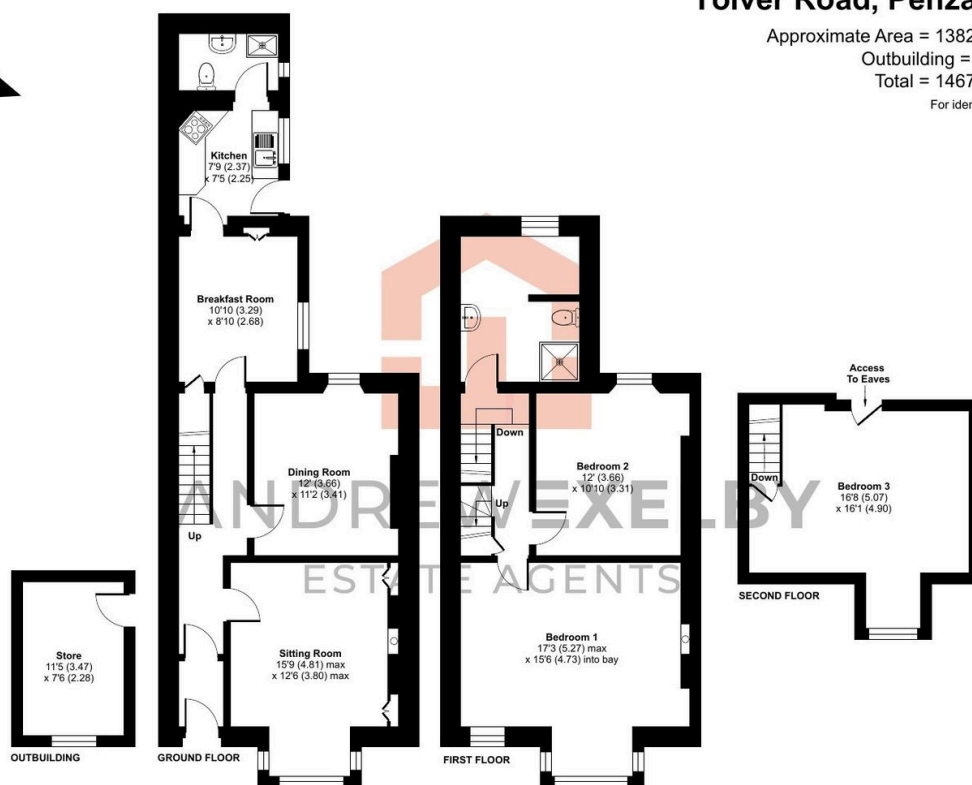
## Tolver Road, Penzance, TR18

Approximate Area = 1382 sq ft / 128.3 sq m

Outbuilding = 85 sq ft / 7.8 sq m

Total = 1467 sq ft / 136.1 sq m

For identification only - Not to scale



Floor plan produced in accordance with RICS Property Measurement 2nd Edition, Incorporating International Property Measurement Standards (IPMS2 Residential). © nixecom 2025. Produced for Andrew Exelby Estate Agents. REF: 1248361