



ANDREW  
EXELBY  
ESTATE AGENTS

## Cape Terrace, St. Just, Penzance, TR19 7JF

£385,000

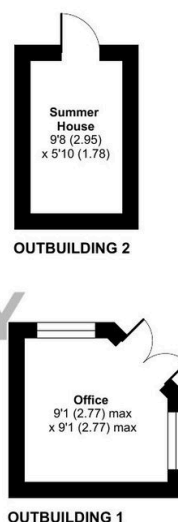
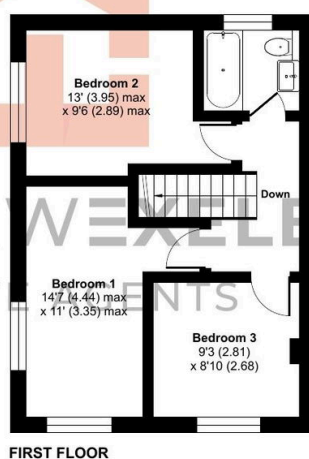
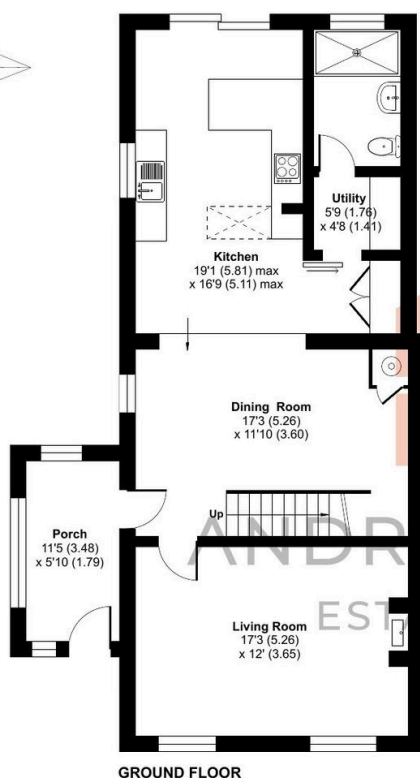
3 2 2



A simply outstanding family home on Cape Cornwall Road with sizeable gardens including a summerhouse, and a storage shed. Three double bedrooms, two bathrooms and some truly fabulous living spaces finished beautifully - the property comes with off street parking and also has sea views.

## Key Features

- FABULOUS THREE DOUBLE BEDROOM HOME
- OFF STREET PARKING PLUS VISITOR PARKING
- IMPRESSIVE KITCHEN/DINING AREA
- SUMMERHOUSE AND STORAGE SHED
- EPC - E
- REFURBISHED & EXTENDED ACCOMMODATION
- GOOD-SIZE GARDENS TO THREE SIDES
- TWO RECENTLY INSTALLED BATHROOMS
- SEA VIEWS FROM GARDEN AND FIRST FLOOR
- COUNCIL TAX BAND - A



## Cape Terrace, St. Just, Penzance, TR19

Approximate Area = 1261 sq ft / 117.1 sq m

Outbuilding = 132 sq ft / 12.2 sq m

Total = 1393 sq ft / 129.3 sq m

For identification only - Not to scale

 Floor plan produced in accordance with RICS Property Measurement 2nd Edition, Incorporating International Property Measurement Standards (IPMS2 Residential). © nixhecom 2025. Produced for Andrew Exelby Estate Agents. REF: 1239915