



ANDREW
EXELBY
ESTATE AGENTS

Bosorne Close, St Just TR19

£295,000

3 bedrooms 1 bathroom 2 living areas



Sure to be popular with families, is this immensely appealing and spacious house on the edge of St Just in an enviable position with wide, open sea views. The property further benefits from parking, a garage and gardens to the front and rear. The property is a 5-10 minute walk in to St Just town centre, and is on the way down to the beautiful Cot Valley where a small, sandy beach reveals itself at low tide.

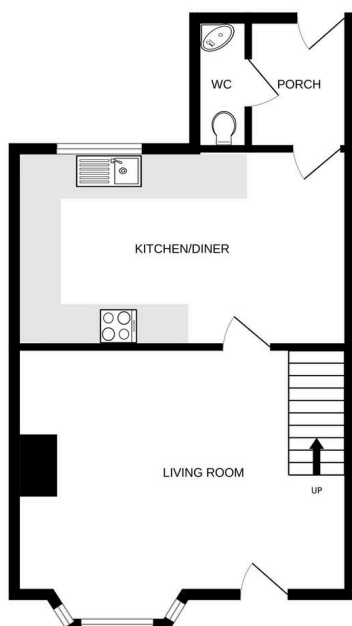


ANDREW
EXELBY
ESTATE AGENTS

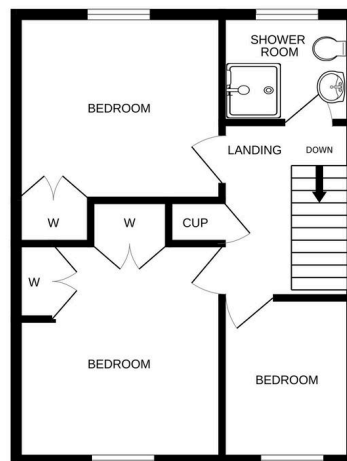
Key Features

- SEMI-DETACHED THREE BEDROOM HOME
- FRONT GARDEN WITH SEA VIEW
- POTENTIAL TO EXTEND/IMPROVE
- SHORT WALK TO ALL FACILITIES
- EPC - E
- PARKING PLUS GARAGE (EN-BLOC)
- REAR PATIO/COURTYARD GARDEN
- FABULOUS VIEWS FROM FIRST FLOOR
- GREAT SIZE ACCOMMODATION
- COUNCIL TAX BAND - C

GROUND FLOOR



1ST FLOOR



Whilst every attempt has been made to ensure the accuracy of the floorplan contained here, measurements of doors, windows, rooms and any other items are approximate and no responsibility is taken for any error, omission or mis-statement. This plan is for illustrative purposes only and should be used as such by any prospective purchaser. The services, systems and appliances shown have not been tested and no guarantee as to their operability or efficiency can be given.
Made with Metropix ©2025