



ANDREW
EXELBY
ESTATE AGENTS

Bosorne Street, St. Just TR19

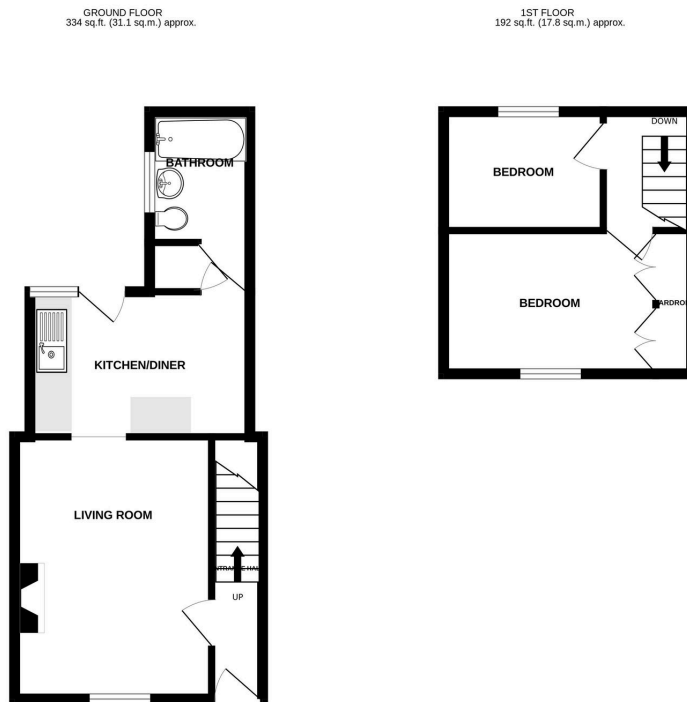
£215,000

🛏 2 🚿 1 🚗 1





- TWO BEDROOM COTTAGE
- UPVC DOUBLE GLAZING THROUGHOUT
- MULTIFUEL STOVE IN LIVING ROOM
- NO ONWARD CHAIN
- COUNCIL TAX BAND - A
- FRONT & REAR GARDENS
- TRAFFIC-FREE LOCATION
- SHORT WALK TO TOWN CENTRE
- EPC - D
-



TOTAL FLOOR AREA: 526 sq.ft. (48.9 sq.m.) approx.
Whilst every attempt has been made to ensure the accuracy of the floorplan, measured areas, measurements of doors, windows, rooms and any other items are approximate and no responsibility is taken for any error, omission or misstatement. This plan is for illustrative purposes only and should be used as such by any prospective purchaser. The services, systems and appliances shown have not been tested and no guarantee as to their operability or efficiency can be given.
Made with floorplan 12/24

This adorable two bedroom home sits in a popular residential street near St Just's town centre, schools and facilities - fully double glazed with night storage heaters and presented in good order - to be sold with no onward chain.