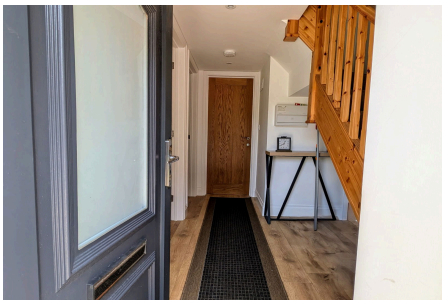




St Just, TR19

£255,000

🛏 2 🚿 1 🚗 1



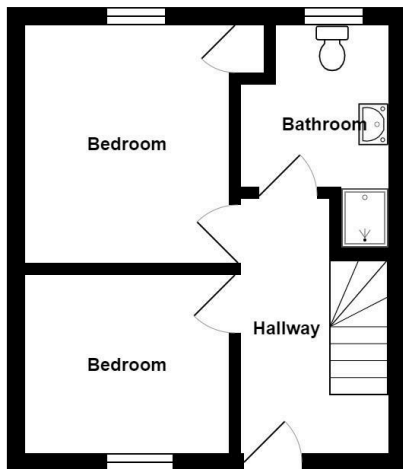
- TWO BEDROOM SEMI-DETACHED PROPERTY
- NEW BUILD COMPLETED IN 2019
- LARGE, OPEN-PLAN LIVING SPACE TO FIRST FLOOR
- EASY ACCESS TO ST JUST TOWN CENTRE

Presenting a modern, yet charming two bedroom cottage in the very centre of St Just - just ten seconds stroll from the main square. This traditionally-built property was only completed in 2019 and is filled with character whilst embracing all the modern conveniences of a new build property.

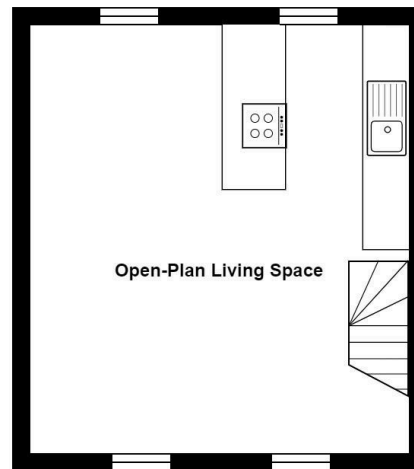


Key Features

- TWO BEDROOM SEMI-DETACHED PROPERTY
- LARGE, OPEN-PLAN LIVING SPACE TO FIRST FLOOR
- SOLID SLATE WINDOW CILLS THROUGHOUT
- MOVE IN-READY / PRESENTED IN EXCELLENT ORDER
- EPC - D
- NEW BUILD COMPLETED IN 2019
- EASY ACCESS TO ST JUST TOWN CENTRE
- UPVC DOUBLE GLAZING THROUGHOUT
- NO ONWARD CHAIN / CHAIN FREE
- COUNCIL TAX BAND - TBC



Ground Floor



First Floor

Total Area: 54.9 m² ... 590 ft²

All measurements are approximate and for display purposes only