



Hea Corner, Heamoor TR18

Guide Price £275,000

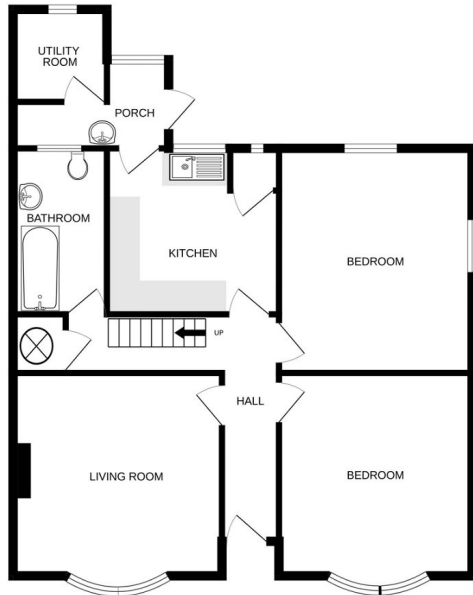
🛏 2 🚿 1 🚗 1



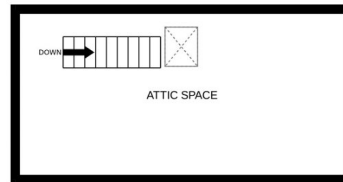
- OFFERED TO THE MARKET WITH NO ONWARD CHAIN
- REQUIRES MODERNISATION THROUGHOUT
- GARDENS AND USEFUL WORKSHOP
- REAR GARDEN WITH COURTYARD AND WORKSHOP
- EPC RATING - G3 / COUNCIL TAX BAND - C
- TWO BEDROOM SEMI-DETACHED BUNGALOW
- USEFUL ATTIC SPACE
- MAJORITY UPV DOUBLE GLAZING
- CLOSE PROXIMITY TO HEAMOR VILLAGE AND PENZANCE TOWN



GROUND FLOOR



1ST FLOOR



Whilst every attempt has been made to ensure the accuracy of the floorplan contained here, measurements of doors, windows, rooms and any other items are approximate and no responsibility is taken for any error, omission or mis-statement. This plan is for illustrative purposes only and should be used as such by any prospective purchaser. The services, systems and appliances shown have not been tested and no guarantee as to their operability or efficiency can be given.
Made with Metroplan 62024

Offered for sale with NO ONWARD CHAIN is this two bedroom semi-detached bungalow that lies within the popular village of Heamoor. The property, despite requiring modernisation throughout, benefits from majority uPVC double glazing, parking, gardens along with a useful workshop/ garage.