



ANDREW
EXELBY
ESTATE AGENTS

Eleni Close, Sennen, TR19

Guide Price £365,000

🛏 4 🍳 2 🛋 2



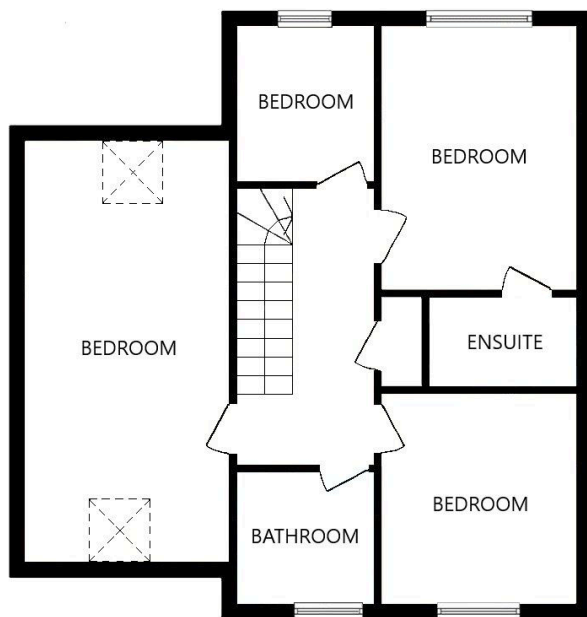
- SEMI-DETACHED FOUR BEDROOM HOME
- DRIVEWAY PARKING PLUS INTEGRAL GARAGE
- FRONT AND REAR GARDEN SPACES
- SHORT WALK TO SENNEN COVE AND BEACH

Just a short walk from this smart, modern home set in Sennen village, is the long stretch of sandy beach down in Sennen Cove. The home is modern and equipped with some fantastic eco-credentials as well as practicality in terms of parking, storage and fantastic outside space.

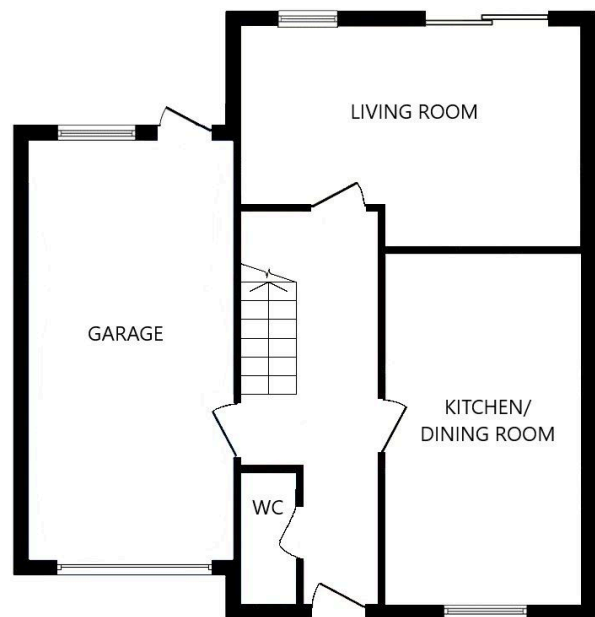


Key Features

- SEMI-DETACHED FOUR BEDROOM HOME
- FRONT AND REAR GARDEN SPACES
- FANTASTIC SEA VIEWS
- MASTER BEDROOM WITH ENSUITE
- COUNCIL TAX BAND - D
- DRIVEWAY PARKING PLUS INTEGRAL GARAGE
- SHORT WALK TO SENNEN COVE AND BEACH
- AIR SOURCE HEAT PUMP & UNDERFLOOR HEATING
- EPC - C
-



FIRST FLOOR



GROUND FLOOR

Whilst every attempt has been made to ensure the accuracy of the floorplan contained here, measurements of doors, windows, rooms and any other items are approximate and no responsibility is taken for any error, omission or mis-statement. This plan is for illustrative purposes only and should be used as such by any prospective purchaser. The services, systems and appliances shown have not been tested and no guarantee as to their operability or efficiency can be given.