

BRICK
MANAGEMENT + LETTINGS



12 Cashel Court 555 Manchester Road, Wardley, Manchester, Lancashire, M27 9BA

£115,000



12 Cashel Court 555 Manchester Road, Wardley, Manchester, Lancashire, M27 9BA

£115,000

Fantastic Investment Opportunity / Great for First Time Buyers!!

New to the market, this modern two bedroom second floor apartment is located in the popular Cashel Court development.

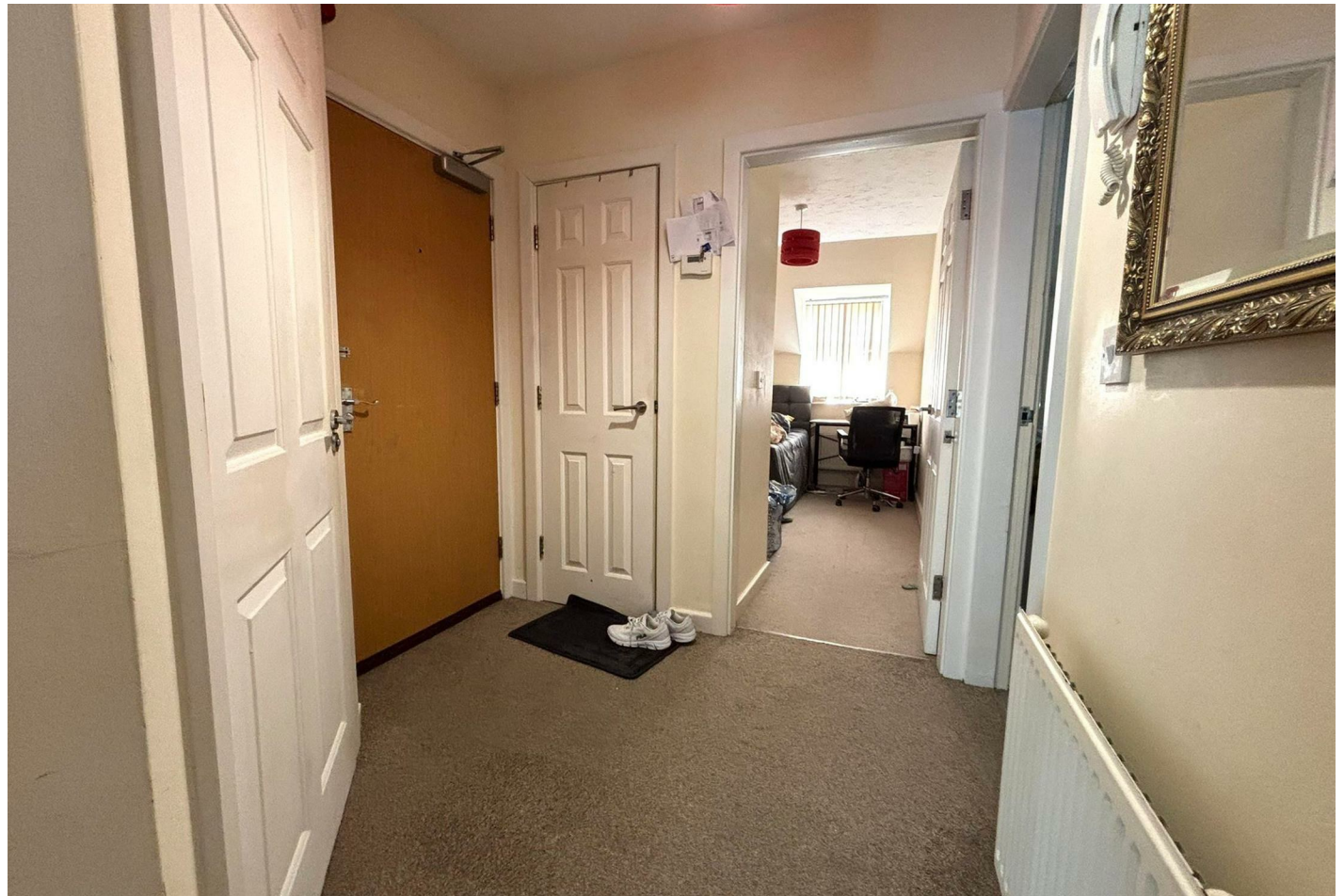
The property itself benefits from an open plan living / dining area, modern kitchen with appliances, one double bedroom, second single bedroom, modern bathroom with shower, neutral decoration throughout, secure entry-phone access and an allocated parking space.

The development is just 5 minutes from the Moorside train station, Swinton town centre and the M60.

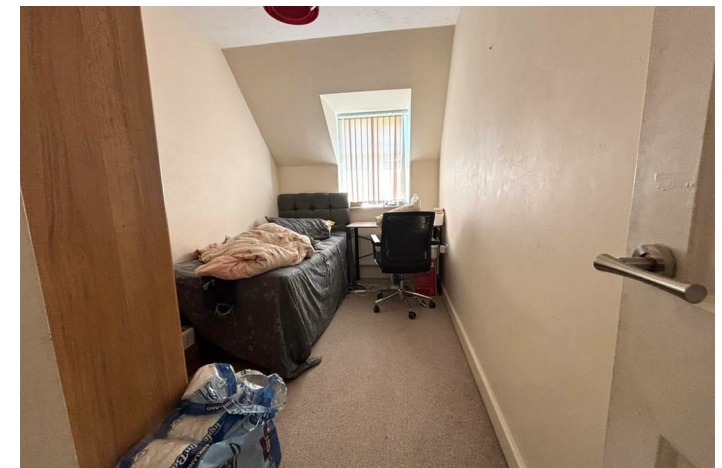
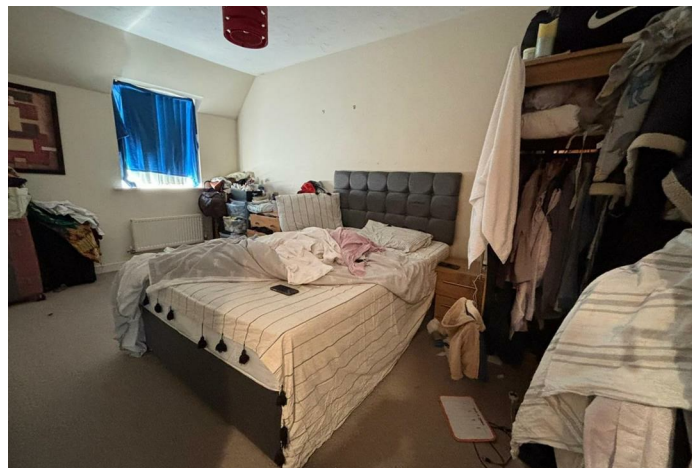
The property can be bought with tenant in situ, so immediate income upon completion of sale.

979 years remaining of the original 999 year lease.

Description



Situation



null

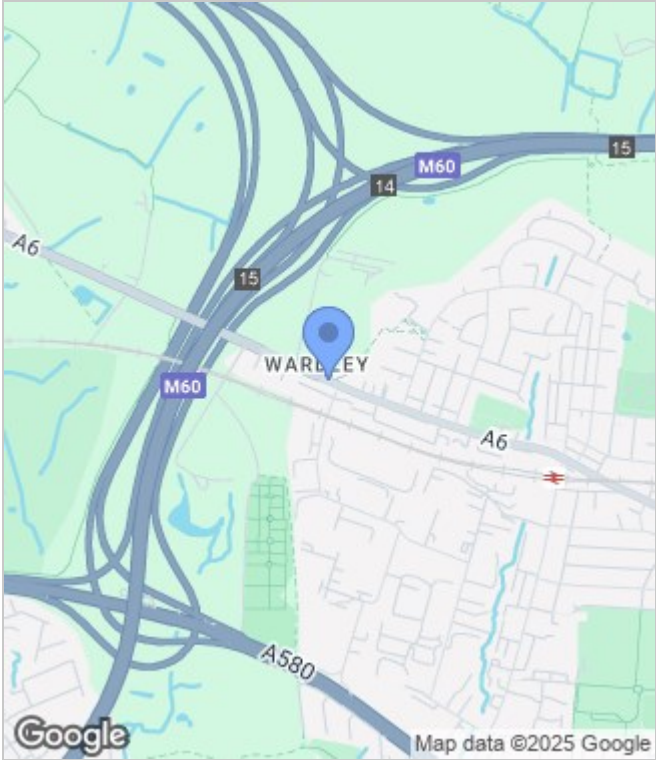
Council Tax Band: B

Available:

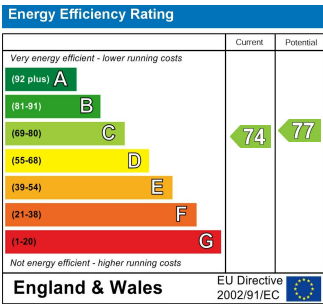
Floor Plans



Area Map



Energy Performance Graph



These particulars, whilst believed to be accurate are set out as a general outline only for guidance and do not constitute any part of an offer or contract. Intending purchasers should not rely on them as statements of representation of fact, but must satisfy themselves by inspection or otherwise as to their accuracy. No person in this firms employment has the authority to make or give any representation or warranty in respect of the property.